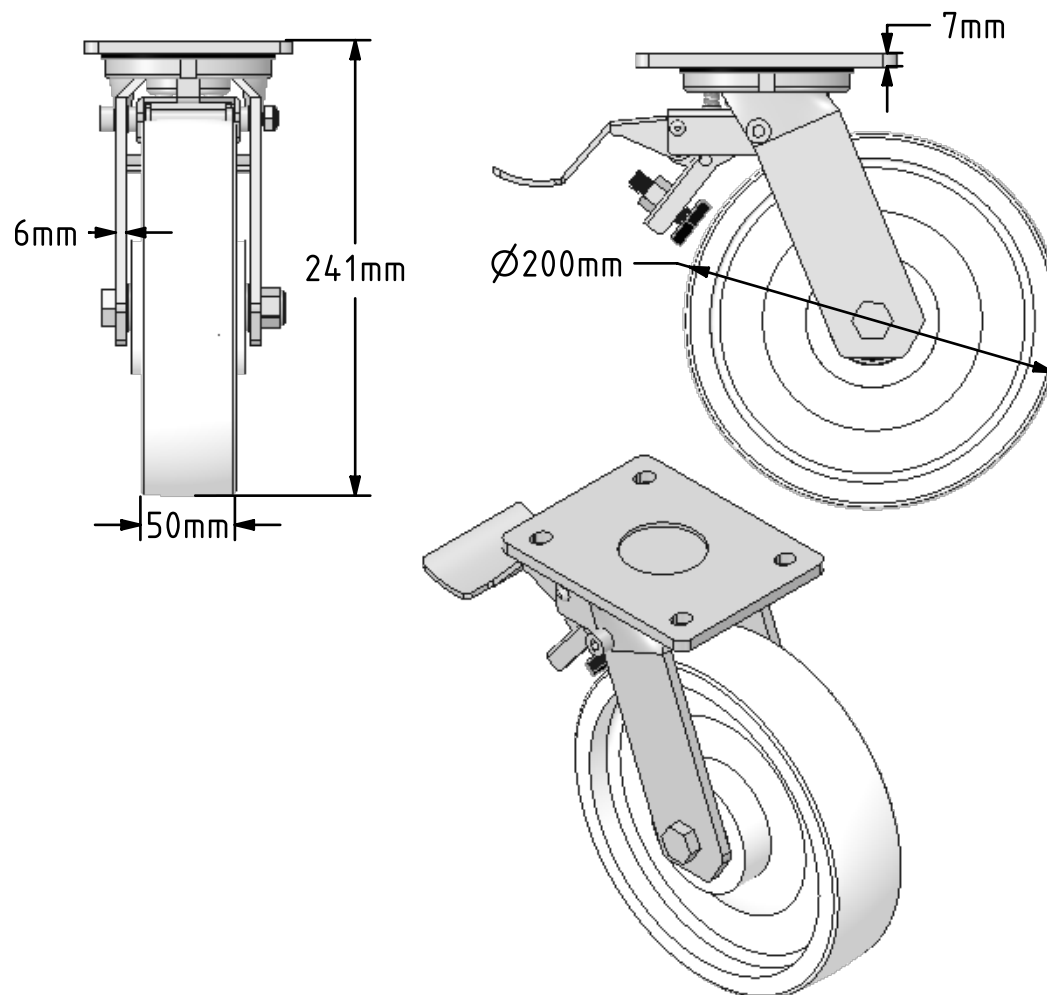
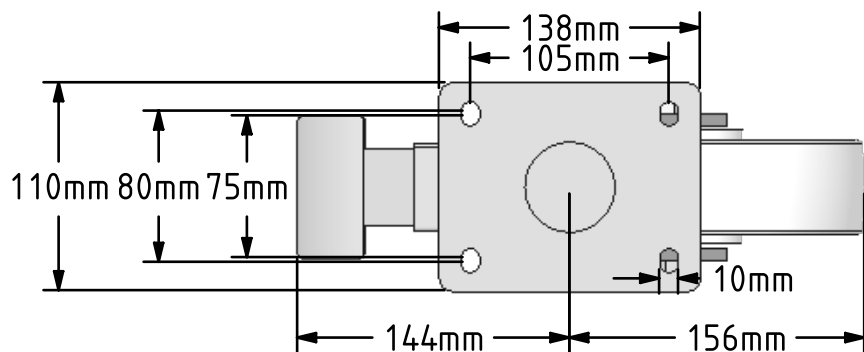


DRAWING DISCLAIMER
 COPYRIGHT OF THIS DRAWING IS RESERVED BY BIL GROUP LTD. IT IS ISSUED ON CONDITION THAT IT IS NOT REPRODUCED, COPIED, OR DISCLOSED TO A THIRD PARTY EITHER WHOLLY OR IN PART WITHOUT THE CONSENT IN WRITING OF BIL GROUP LTD.



Description:
 BZMJ200NYBJSWB

Fabricated white zinc ROHS plated swivel castor with a top plate fixing fitted with a white nylon wheel with ball bearings and total lock brake. Wheel diameter 200mm, tread width 50mm, overall height 241mm, top plate 138mm x 110mm, hole centres 105mm x 80mm/75mm. Load capacity 600kg.



	NAME	DATE
DRAWN	Matt	12/04/18
APPROVED BY	Tim W	12/04/18
SCALE	1:4	12/04/18
WEIGHT	3.804kg	12/04/18

BIL BIL Group Ltd, Porte Marsh Road, Calne
 Wiltshire, SN11 9BW, United Kingdom
 Tel +44 (0)1249 822 222 Fax: +44 (0)1249 822 300
 www.bilgroup.co.uk

TITLE		REV
BZMJ200NYBJSWB		1
SIZE	DWG NO.	FILE NAME
A4	BILCW03BZMJ200NYBJSWB_01	BILCW03BZMJ200NYBJSWB_01.PDF
UNLESS OTHERWISE SPECIFIED DIMENSIONS ARE IN MILLIMETRES		SHEET 1 OF 1
Unspecified Tolerances Machining ± 0.25mm Fabrication ± 1mm		