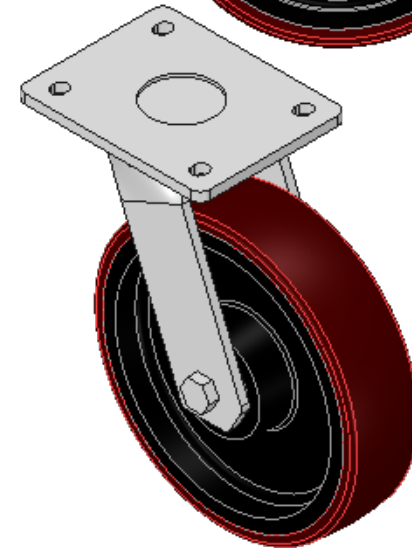
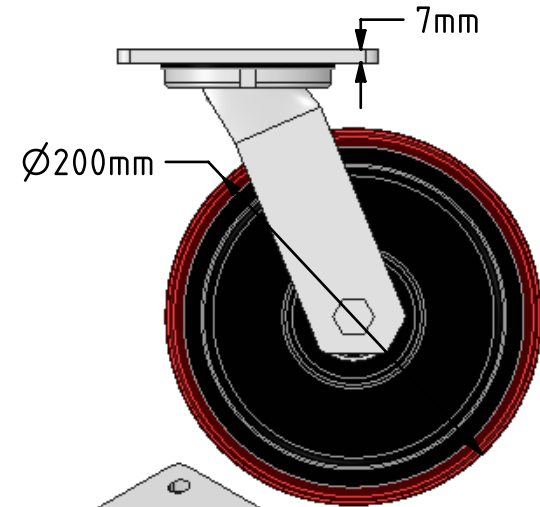
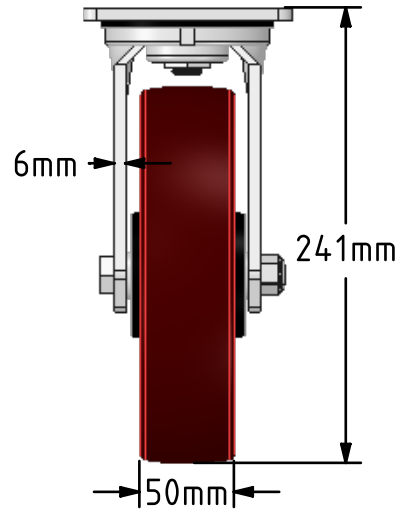
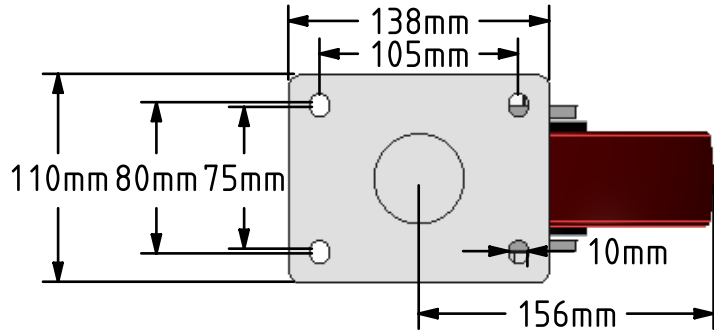


DRAWING DISCLAIMER  
 COPYRIGHT OF THIS DRAWING IS RESERVED BY BIL GROUP LTD. IT IS ISSUED ON CONDITION THAT IT IS NOT REPRODUCED, COPIED, OR DISCLOSED TO A THIRD PARTY EITHER WHOLLY OR IN PART WITHOUT THE CONSENT IN WRITING OF BIL GROUP LTD.



**Description:**  
 BZMJ200PTBJ

Fabricated white zinc ROHS plated swivel castor with a top plate fixing fitted with a polyurethane tyred cast iron centred wheel with ball bearings. Wheel diameter 200mm, tread width 50mm, overall height 241mm, top plate 138mm x 110mm, hole centres 105mm x 80/75mm. Load capacity 600kg.



	NAME	DATE
DRAWN	Matt	19/04/18
APPROVED BY	Tim W	19/04/18
SCALE	1:4	19/04/18
WEIGHT	5.924kg	19/04/18

UNLESS OTHERWISE SPECIFIED DIMENSIONS ARE IN MILLIMETRES  
 Unspecified Tolerances  
 Machining ± 0.25mm  
 Fabrication ± 1mm

	BIL Group Ltd, Porte Marsh Road, Calne Wiltshire, SN11 9BW, United Kingdom Tel +44 (0)1249 822 222 Fax: +44 (0)1249 822 300 www.bilgroup.co.uk	
	TITLE <b>BZMJ200PTBJ</b>	

SIZE	DWG NO.	REV
A4	BILCW03BZMJ200PTBJ_02	2
FILE NAME	BILCW03BZMJ200PTBJ_02.PDF SHEET 1 OF 1	