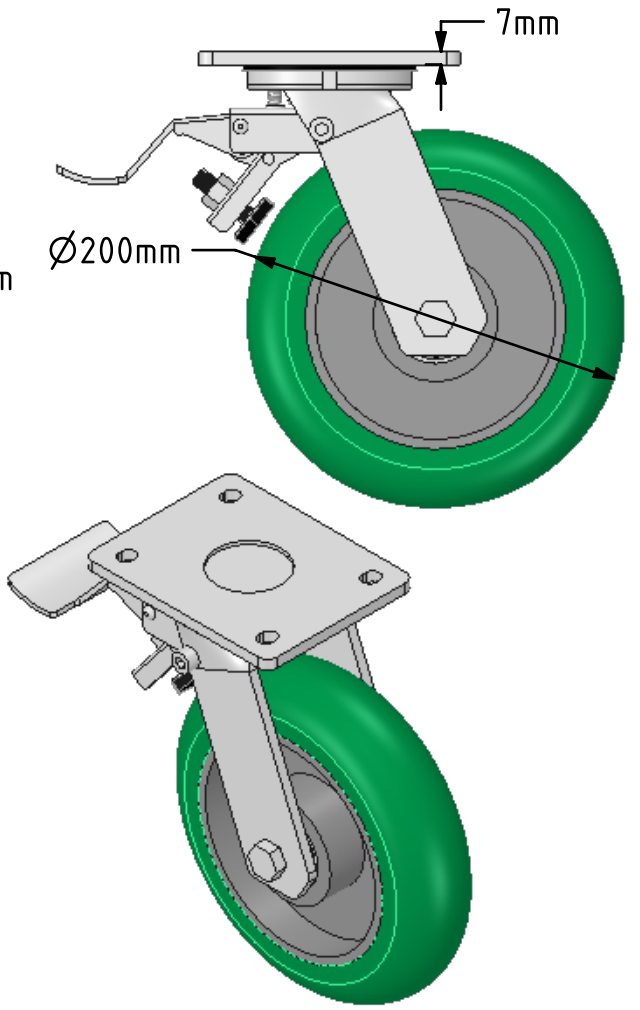
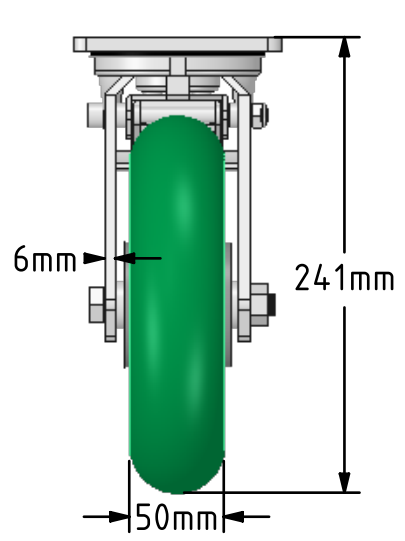
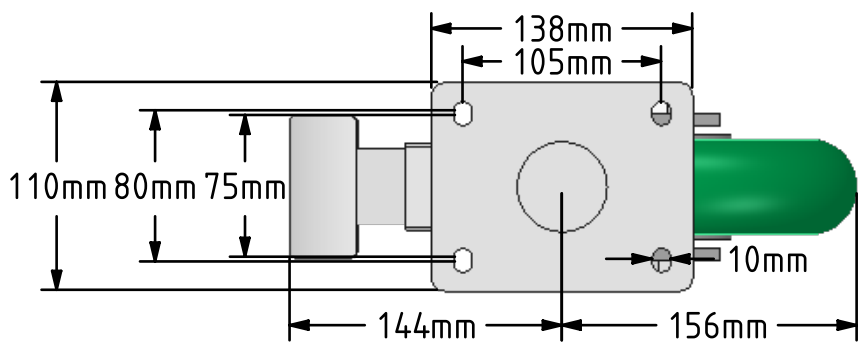


DRAWING DISCLAIMER
 COPYRIGHT OF THIS DRAWING IS RESERVED BY BIL GROUP LTD. IT IS ISSUED ON CONDITION THAT IT IS NOT REPRODUCED, COPIED, OR DISCLOSED TO A THIRD PARTY EITHER WHOLLY OR IN PART WITHOUT THE CONSENT IN WRITING OF BIL GROUP LTD.



Description:
 BZMJ200SRPTABJSWB
 Fabricated white zinc ROHS plated swivel castor with a flat plate fixing fitted with a round profile polyurethane on aluminium centred wheel with ball bearings and total lock brake, Wheel diameter 200mm, tread width 50mm, overall height 241mm, plate size 138mm x 110mm, hole centres 105mm x 80mm/75mm. Load capacity 600kg



	NAME	DATE
DRAWN	Matt	18/04/18
APPROVED BY	Tim W	18/04/18
SCALE	1:4	18/04/18
WEIGHT	4.657kg	18/04/18

BIL BIL Group Ltd, Porte Marsh Road, Calne Wiltshire, SN11 9BW, United Kingdom
 Tel +44 (0)1249 822 222 Fax: +44 (0)1249 822 300
 www.bilgroup.co.uk

TITLE
BZMJ200SRPTABJSWB

UNLESS OTHERWISE SPECIFIED DIMENSIONS ARE IN MILLIMETRES
 Unspecified Tolerances
 Machining ± 0.25mm
 Fabrication ± 1mm

SIZE	DWG NO.	REV
A4	BILCW03BZMJ200SRPTABJSWB_01	1

FILE NAME BILCW03BZMJ200SRPTABJSWB_01.PDF SHEET 1 OF 1