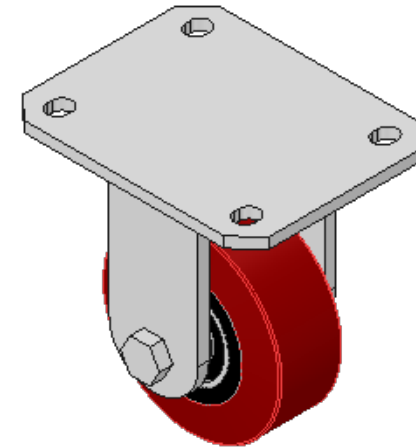
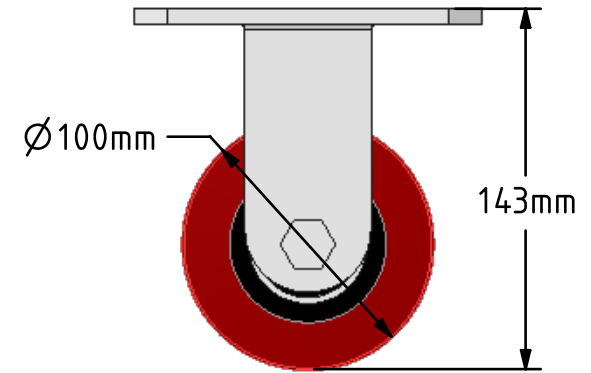
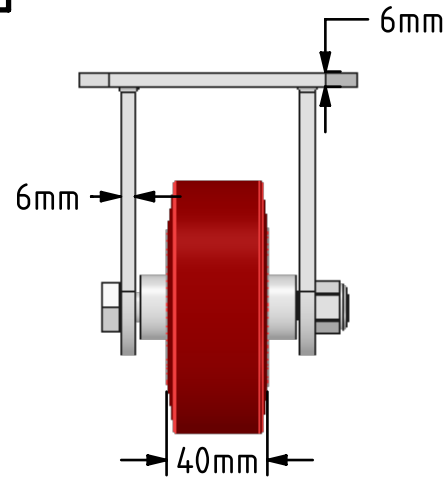
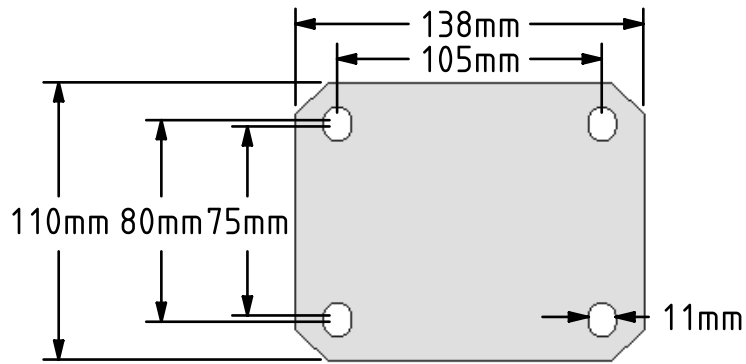
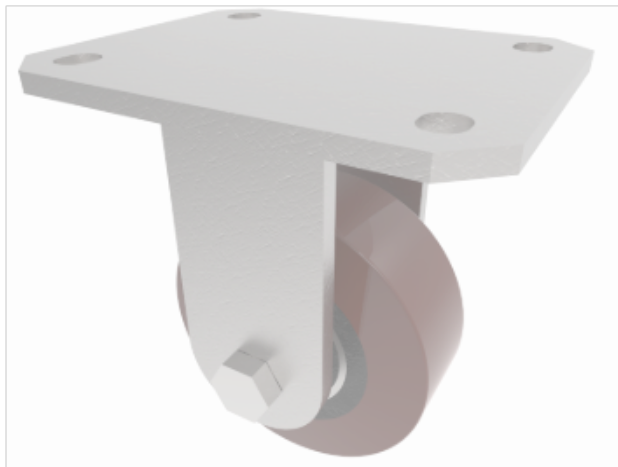


DRAWING DISCLAIMER
 COPYRIGHT OF THIS DRAWING IS RESERVED BY BIL GROUP LTD. IT IS ISSUED ON CONDITION THAT IT IS NOT REPRODUCED, COPIED, OR DISCLOSED TO A THIRD PARTY EITHER WHOLLY OR IN PART WITHOUT THE CONSENT IN WRITING OF BIL GROUP LTD.



Description:
 BZMJF100PTBJ

Fabricated white zinc ROHS plated fixed castor with a polyurethane tyred cast iron centred wheel with ball bearings. Wheel diameter 100mm, tread width 40mm, overall height 143mm, top plate 138mm x 110mm, hole centres 105mm x 80mm/75mm. Load capacity 300kg.



	NAME	DATE
DRAWN	Matt	21/03/18
APPROVED BY	Tim W	21/03/18
SCALE	1:3	21/03/18
WEIGHT	2.147kg	21/03/18

UNLESS OTHERWISE SPECIFIED DIMENSIONS ARE IN MILLIMETRES
 Unspecified Tolerances
 Machining ± 0.25mm
 Fabrication ± 1mm

 BIL Group Ltd, Porte Marsh Road, Calne
 Wiltshire, SN11 9BW, United Kingdom
 Tel +44 (0)1249 822 222 Fax: +44 (0)1249 822 300
 www.bilgroup.co.uk

TITLE
BZMJF100PTBJ

SIZE	DWG NO.	REV
A4	BILCW03BZMJF100PTBJ_01	1
FILE NAME	BILCW03BZMJF100PTBJ_01.PDF SHEET 1 OF 1	