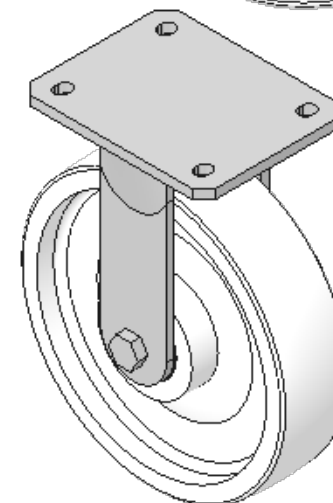
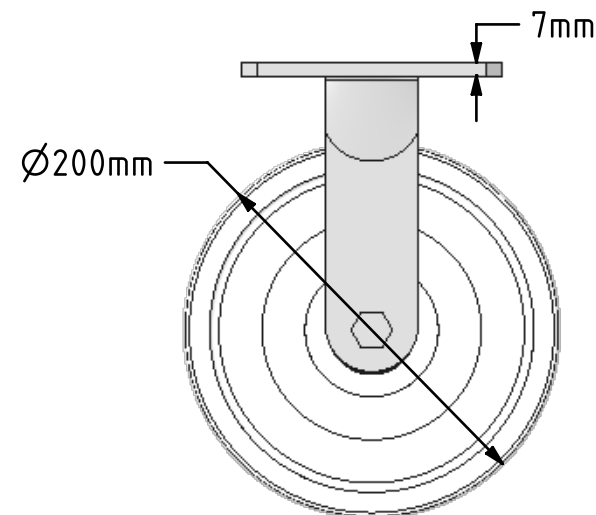
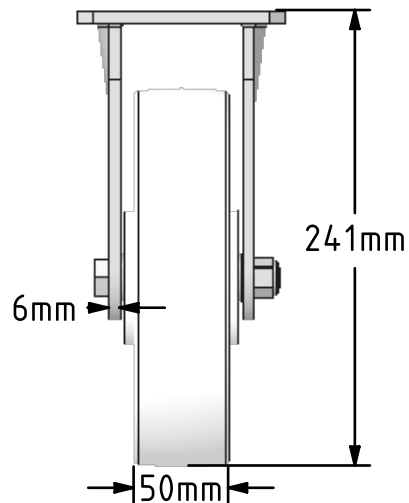
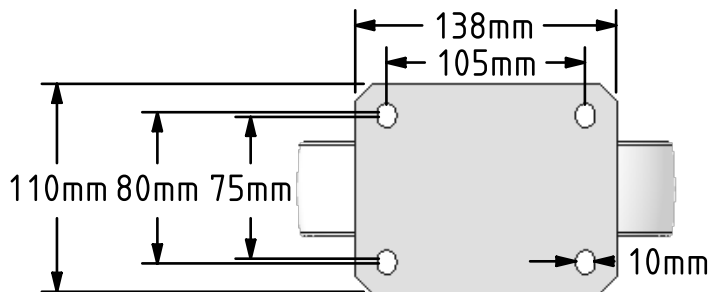


DRAWING DISCLAIMER
 COPYRIGHT OF THIS DRAWING IS RESERVED BY BIL GROUP LTD. IT IS ISSUED ON CONDITION THAT IT IS NOT REPRODUCED, COPIED, OR DISCLOSED TO A THIRD PARTY EITHER WHOLLY OR IN PART WITHOUT THE CONSENT IN WRITING OF BIL GROUP LTD.



Description:
 BZMJF200NYBJ

Fabricated white zinc ROHS plated fixed castor with top plate fixing fitted with a white nylon wheel with ball bearings. Wheel diameter 200mm, tread width 50mm, overall height 241mm, top plate 138mm x 110mm, hole centres 105mm x 80mm/75mm. Load capacity 600kg.



	NAME	DATE
DRAWN	Matt	12/04/18
APPROVED BY	Tim W	12/04/18
SCALE	1:4	12/04/18
WEIGHT	2.687kg	12/04/18

UNLESS OTHERWISE SPECIFIED DIMENSIONS ARE IN MILLIMETRES
 Unspecified Tolerances
 Machining ± 0.25mm
 Fabrication ± 1mm

 BIL Group Ltd, Porte Marsh Road, Calne Wiltshire, SN11 9BW, United Kingdom Tel +44 (0)1249 822 222 Fax: +44 (0)1249 822 300 www.bilgroup.co.uk		TITLE	
		BZMJF200NYBJ	
SIZE	DWG NO.	REV	
A4	BILCW03BZMJF200NYBJ_01	1	
FILE NAME	BILCW03BZMJF200NYBJ_01.PDF		SHEET 1 OF 1