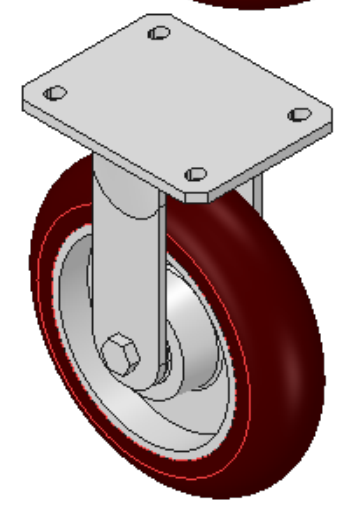
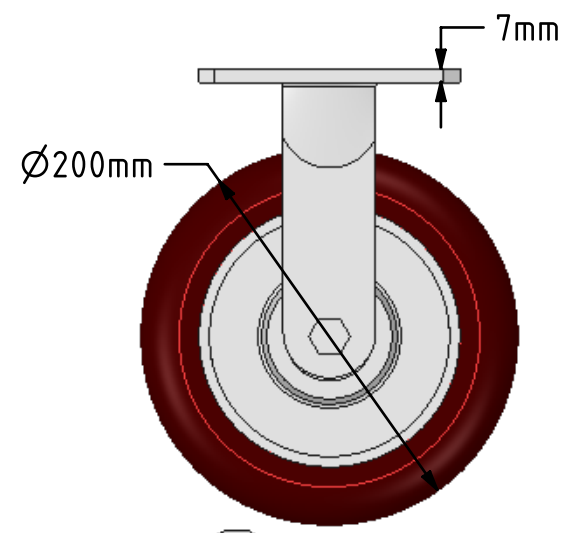
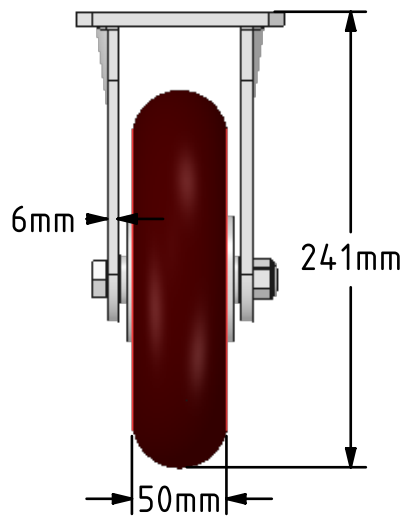
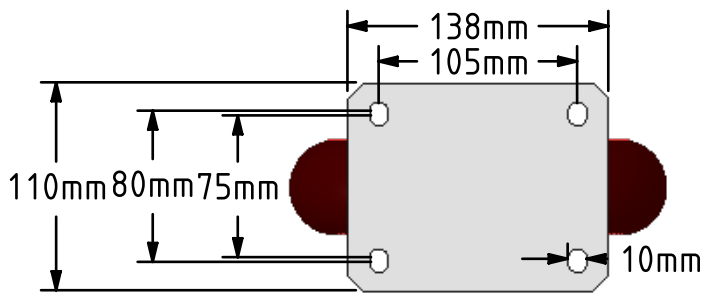



**DRAWING DISCLAIMER**  
 COPYRIGHT OF THIS DRAWING IS RESERVED BY BIL GROUP LTD. IT IS ISSUED ON CONDITION THAT IT IS NOT REPRODUCED, COPIED, OR DISCLOSED TO A THIRD PARTY EITHER WHOLLY OR IN PART WITHOUT THE CONSENT IN WRITING OF BIL GROUP LTD.



**Description:**  
 BZMJF200RPTABJ  
 Fabricated white zinc ROHS plated fixed castor with top plate fixing fitted with a 200mm x 50mm ergonomic brown polyurethane tyred aluminium centred wheel with ball bearings overall height 241mm, plate size 138mm x 110mm, hole centres 105mm x 80/75mm. Load capacity 600kg



	NAME	DATE	 BIL Group Ltd, Porte Marsh Road, Calne Wiltshire, SN11 9BW, United Kingdom Tel +44 (0)1249 822 222 Fax: +44 (0)1249 822 300 www.bilgroup.co.uk
DRAWN	Matt	18/04/18	
APPROVED BY	Tim W	18/04/18	
SCALE	1:4	18/04/18	
WEIGHT	3.567kg	18/04/18	
UNLESS OTHERWISE SPECIFIED DIMENSIONS ARE IN MILLIMETRES Unspecified Tolerances Machining ± 0.25mm Fabrication ± 1mm			TITLE <b>BZMJF200RPTABJ</b>
SIZE		DWG NO.	REV
A4		BILCW03BZMJF200RPTABJ_01	1
FILE NAME			SHEET 1 OF 1
BILCW03BZMJF200RPTABJ_01.PDF			