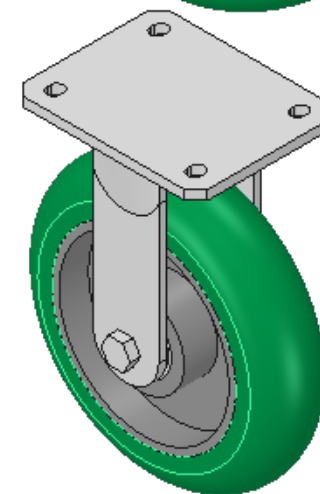
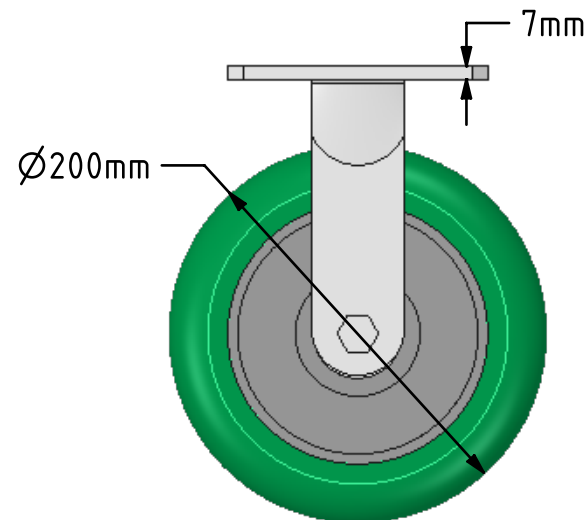
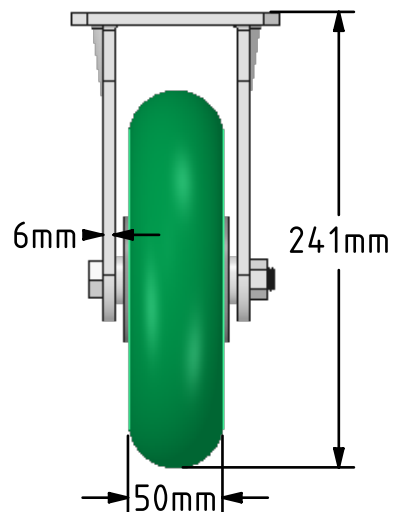
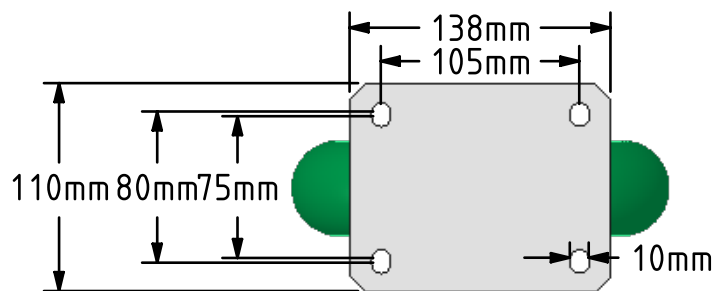


DRAWING DISCLAIMER  
 COPYRIGHT OF THIS DRAWING IS RESERVED BY BIL GROUP LTD. IT IS ISSUED ON CONDITION THAT IT IS NOT REPRODUCED, COPIED, OR DISCLOSED TO A THIRD PARTY EITHER WHOLLY OR IN PART WITHOUT THE CONSENT IN WRITING OF BIL GROUP LTD.



Description:  
 BZMJF200SRPTABJ

Fabricated white zinc ROHS plated fixed castor with top plate fixing fitted with a 200mm x 50mm 85 shore A ergonomic green polyurethane tyred aluminium centred wheel with ball bearings overall height 241mm, plate size 138mm x 110mm, hole centres 105mm x 80/75mm. Load capacity 600kg



	NAME	DATE
DRAWN	Matt	18/04/18
APPROVED BY	Tim W	18/04/18
SCALE	1:4	18/04/18
WEIGHT	3.54kg	18/04/18

UNLESS OTHERWISE SPECIFIED DIMENSIONS ARE IN MILLIMETRES

Unspecified Tolerances  
 Machining ± 0.25mm  
 Fabrication ± 1mm



BIL Group Ltd, Porte Marsh Road, Calne  
 Wiltshire, SN11 9BW, United Kingdom  
 Tel +44 (0)1249 822 222 Fax: +44 (0)1249 822 300  
 www.bilgroup.co.uk

TITLE

BZMJF200SRPTABJ

SIZE	DWG NO.	REV
A4	BILCW03BZMJF200SRPTABJ_01	1

FILE NAME BILCW03BZMJF200SRPTABJ\_01.PDF SHEET 1 OF 1