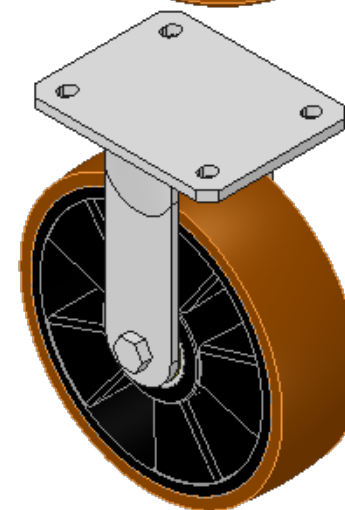
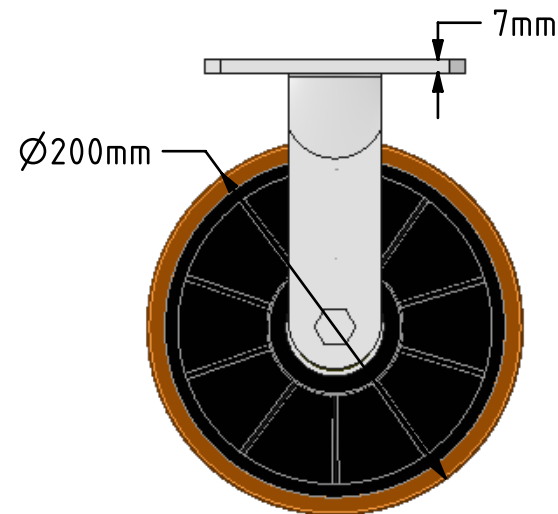
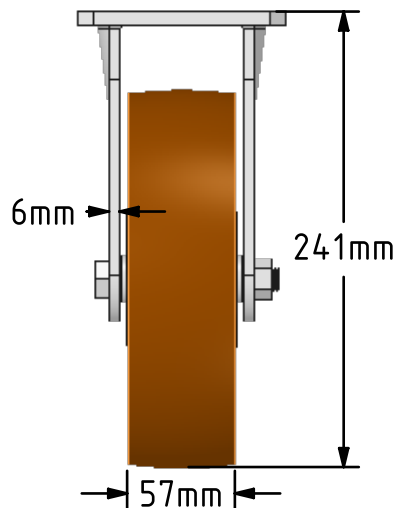
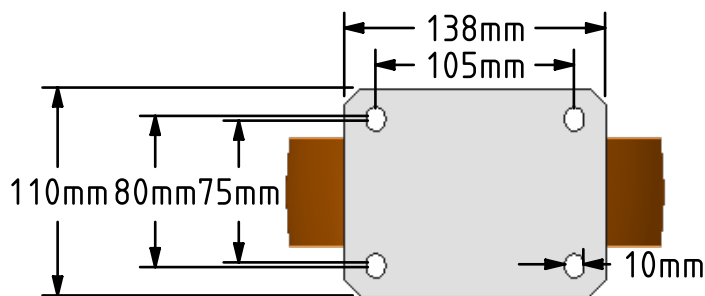
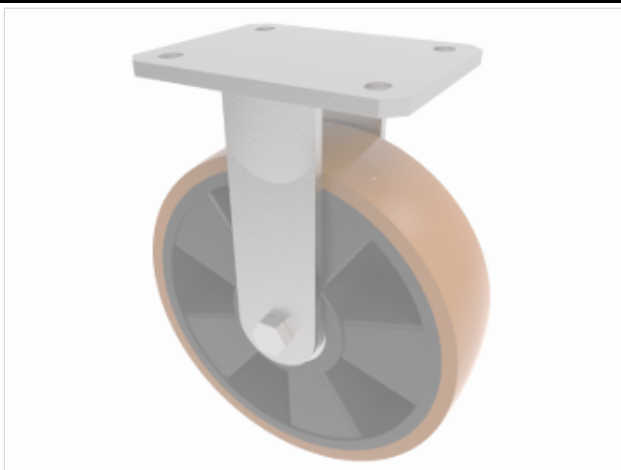


DRAWING DISCLAIMER
 COPYRIGHT OF THIS DRAWING IS RESERVED BY BIL GROUP LTD. IT IS ISSUED ON CONDITION THAT IT IS NOT REPRODUCED, COPIED, OR DISCLOSED TO A THIRD PARTY EITHER WHOLLY OR IN PART WITHOUT THE CONSENT IN WRITING OF BIL GROUP LTD.



Description:
 BZMJF200XPBJ

Fabricated white zinc ROHS plated fixed castor with a top plate fixing fitted with a brown polyurethane tyred nylon centred wheel with ball bearings. Wheel diameter 200mm, tread width 57mm, overall height 241mm, top plate 138mm x 110mm, hole centres 105mm x 80mm. Load capacity 600kg.



	NAME	DATE
DRAWN	Matt	17/04/18
APPROVED BY	Tim W	17/04/18
SCALE	1:4	17/04/18
WEIGHT	3.043kg	17/04/18

UNLESS OTHERWISE SPECIFIED DIMENSIONS ARE IN MILLIMETRES

Unspecified Tolerances
 Machining ± 0.25mm
 Fabrication ± 1mm



BIL Group Ltd, Porte Marsh Road, Calne
 Wiltshire, SN11 9BW, United Kingdom
 Tel +44 (0)1249 822 222 Fax: +44 (0)1249 822 300
 www.bilgroup.co.uk

TITLE

BZMJF200XPBJ

SIZE DWG NO.

A4

BILCW03BZMJF200XPBJ_01

REV

1

FILE NAME BILCW03BZMJF200XPBJ_01.PDF

SHEET 1 OF 1