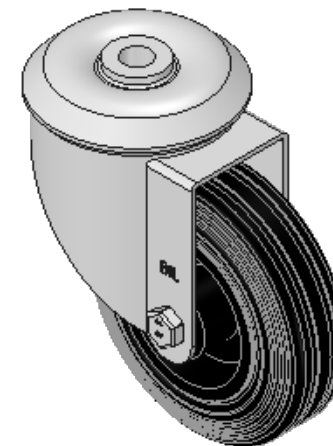
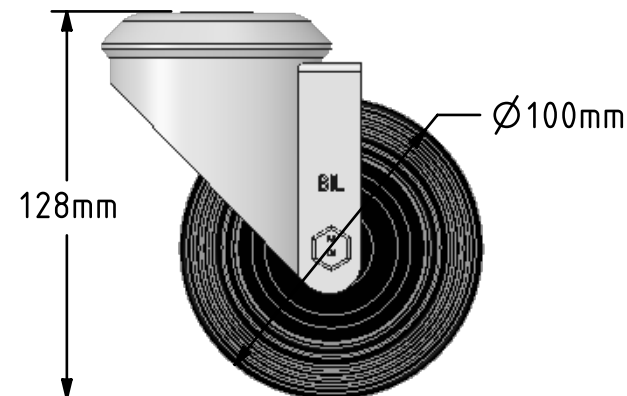
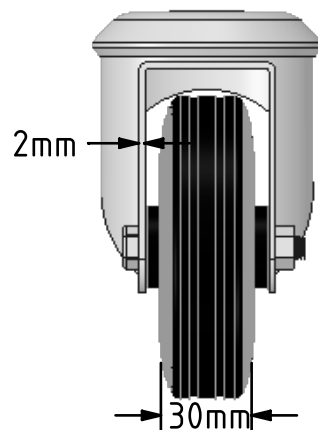
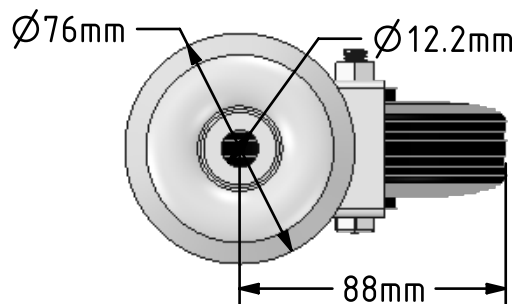



DRAWING DISCLAIMER
 COPYRIGHT OF THIS DRAWING IS RESERVED BY BIL GROUP LTD. IT IS ISSUED ON CONDITION THAT IT IS NOT REPRODUCED, COPIED, OR DISCLOSED TO A THIRD PARTY EITHER WHOLLY OR IN PART WITHOUT THE CONSENT IN WRITING OF BIL GROUP LTD.



Description:
 BZMM100PSBBH12

Pressed steel swivel castor with a 12mm bolt hole fixing fitted with a black rubber tyre black polypropylene centred wheel with roller bearing. Wheel diameter 100mm, tread width 30mm, overall height 128mm. Load capacity 70kg.



	NAME	DATE	BIL Group Ltd, Porte Marsh Road, Calne Wiltshire, SN11 9BW, United Kingdom Tel +44 (0)1249 822 222 Fax: +44 (0)1249 822 300 www.bilgroup.co.uk	
DRAWN	Matt	18/01/18	 TITLE BZMM100PSBBH12	
APPROVED BY	Chris	18/01/18		
SCALE	2:5	18/01/18		
WEIGHT	0.732kg	18/01/18		
UNLESS OTHERWISE SPECIFIED DIMENSIONS ARE IN MILLIMETRES			SIZE	DWG NO.
Unspecified Tolerances Machining ± 0.25mm Fabrication ± 1mm			A4	BILCW03BZMM100PSBBH12_01
			REV	1
			FILE NAME	BILCW03BZMM100PSBBH12_01.PDF SHEET 1 OF 1