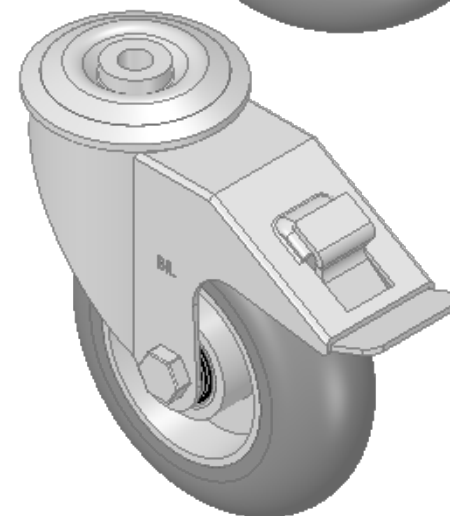
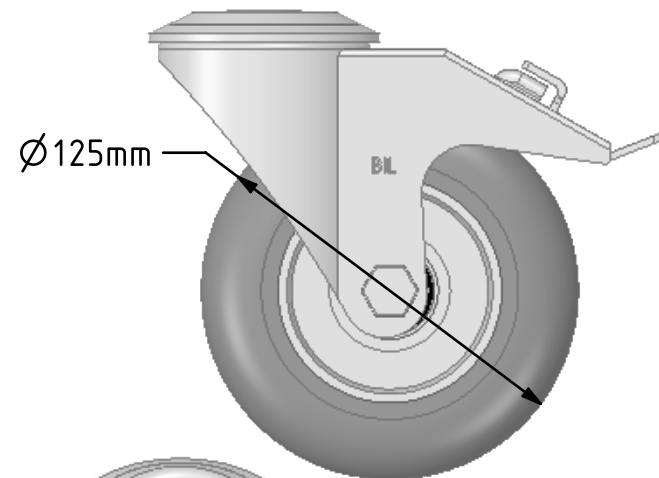
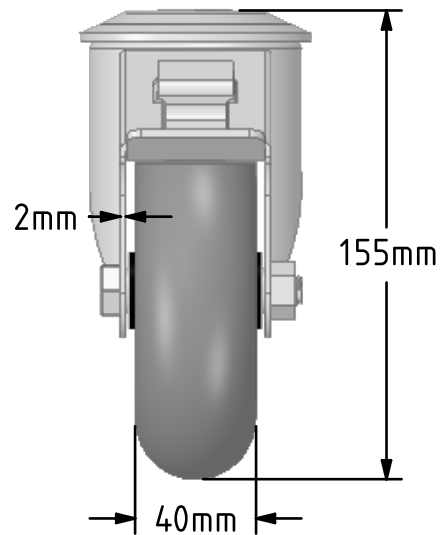
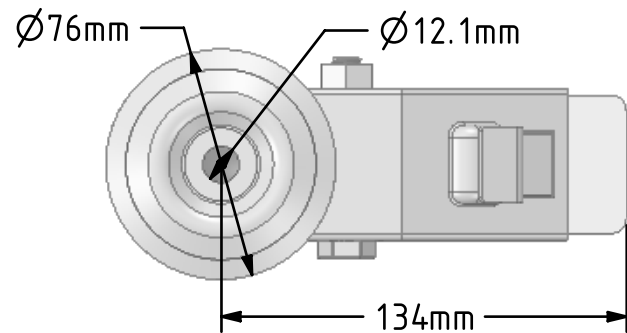


DRAWING DISCLAIMER

COPYRIGHT OF THIS DRAWING IS RESERVED BY BIL GROUP LTD. IT IS ISSUED ON CONDITION THAT IT IS NOT REPRODUCED, COPIED, OR DISCLOSED TO A THIRD PARTY EITHER WHOLLY OR IN PART WITHOUT THE CONSENT IN WRITING OF BIL GROUP LTD.



Description:
BZMM125SRERGBJBH12SW

Pressed steel swivel castor with a 12mm bolt hole with a grey ergonomic grey high elastic natural 55 shore A round profile rubber tyre wheel with an aluminium centre with ball bearings and total lock brake. Wheel diameter 125mm, tread width 40mm, overall height 155mm, Load capacity 200kg, REACH compliant also PAH-Free rubber to confirm to EU-directive 2005/69/EC, also available with flat tread details on request



	NAME	DATE
DRAWN	Matt	06/11/18
APPROVED BY	Tim W	06/11/18
SCALE	2.5	06/11/18
WEIGHT	1.313kg	06/11/18



BIL Group Ltd, Porte Marsh Road, Calne
Wiltshire, SN11 9BW, United Kingdom
Tel +44 (0)1249 822 222 Fax: +44 (0)1249 822 300
www.bilgroup.co.uk

TITLE

BZMM125SRERGBJBH12SW

UNLESS OTHERWISE SPECIFIED DIMENSIONS ARE IN MILLIMETRES

Unspecified Tolerances
Machining ± 0.25mm
Fabrication ± 1mm

SIZE	DWG NO.	REV
A4	BILCW03BZMM125SRERGBJBH12SW_01	1

FILE NAME BILCW03BZMM125SRERGBJBH12SW_01.PDF SHEET 1 OF 1