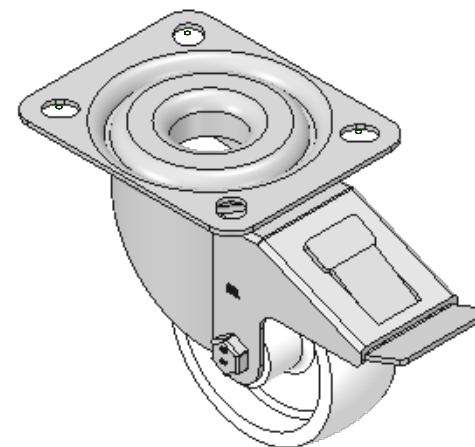
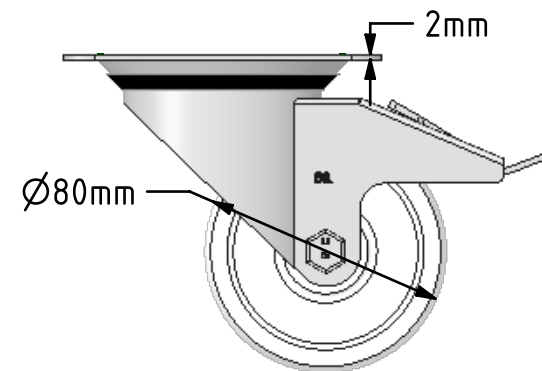
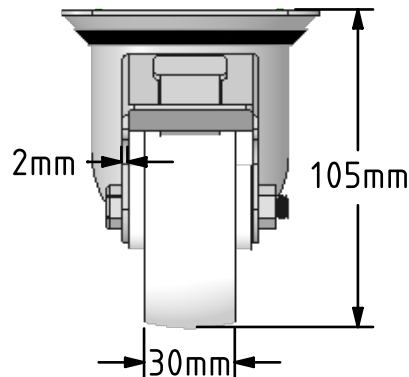
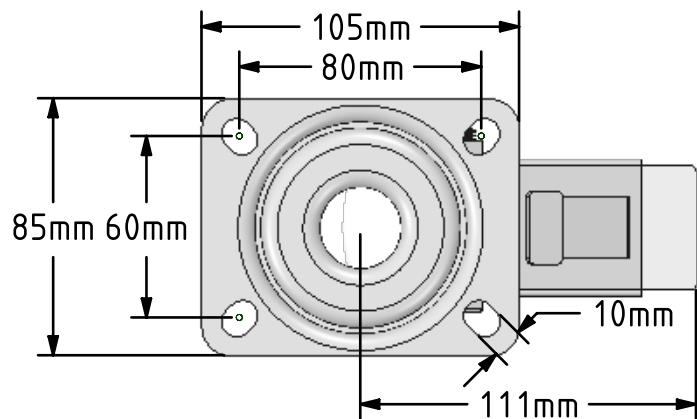


DRAWING DISCLAIMER  
 COPYRIGHT OF THIS DRAWING IS RESERVED BY BIL GROUP LTD. IT IS ISSUED ON CONDITION THAT IT IS NOT REPRODUCED, COPIED, OR DISCLOSED TO A THIRD PARTY EITHER WHOLLY OR IN PART WITHOUT THE CONSENT IN WRITING OF BIL GROUP LTD.



Description:  
 BZMM80NYBSWB

Pressed steel swivel castor with top plate fixing fitted with a white nylon wheel with plain bearing and total lock brake. Wheel diameter 80mm, tread width 30mm, overall height 105mm, top plate 105mm x 85mm, hole centres 80mm x 60mm. Load capacity 150kg.



	NAME	DATE
DRAWN	Matt	29/06/18
APPROVED BY	Chris	29/06/18
SCALE	2:5	29/06/18
WEIGHT	0.697kg	29/06/18

 BIL Group Ltd, Porte Marsh Road, Calne  
 Wiltshire, SN11 9BW, United Kingdom  
 Tel +44 (0)1249 822 222 Fax: +44 (0)1249 822 300  
 www.bilgroup.co.uk

TITLE		REV
BZMM80NYBSWB		1
SIZE	DWG NO.	FILE NAME
A4	BILCW03BZMM80NYBSWB_01	BILCW03BZMM80NYBSWB_01.PDF
UNLESS OTHERWISE SPECIFIED DIMENSIONS ARE IN MILLIMETRES		SHEET 1 OF 1
Unspecified Tolerances Machining ± 0.25mm Fabrication ± 1mm		