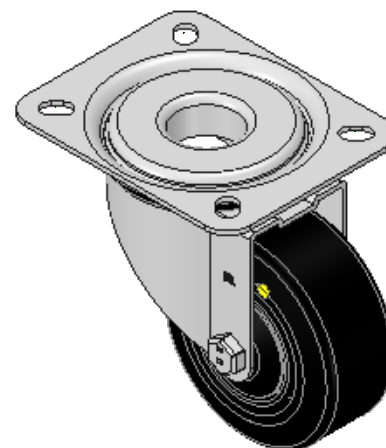
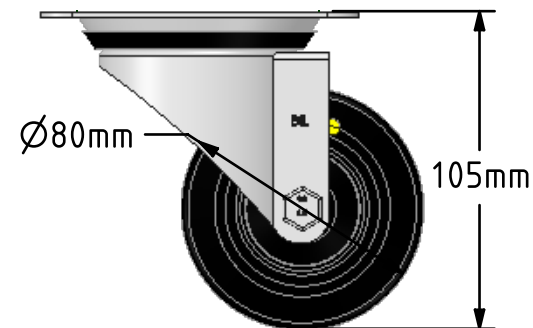
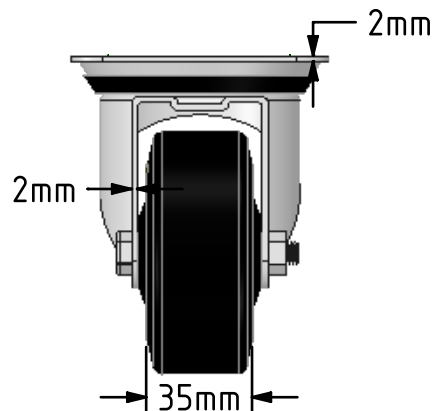
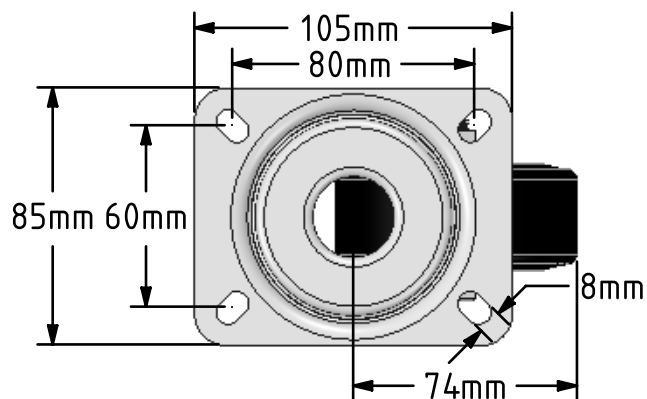



DRAWING DISCLAIMER
 COPYRIGHT OF THIS DRAWING IS RESERVED BY BIL GROUP LTD. IT IS ISSUED ON CONDITION THAT IT IS NOT REPRODUCED, COPIED, OR DISCLOSED TO A THIRD PARTY EITHER WHOLLY OR IN PART WITHOUT THE CONSENT IN WRITING OF BIL GROUP LTD.



Description:
 BZMM80RNBJEC

Pressd steel swivel castor with a top plate fixing fitted with a 65 shore A black elastic electrically conductive rubber wheel on a black nylon centre with a ball bearing. Wheel diameter 80mm, tread width 35mm, overall height 105mm, top plate 105mm x 85mm, hole centres 80mm x 60mm Load capacity 100kg. Conductivity range is 10^{-3} ohm to 10^{-4} ohm



	NAME	DATE	 BIL Group Ltd, Porte Marsh Road, Calne Wiltshire, SN11 9BW, United Kingdom Tel +44 (0)1249 822 222 Fax: +44 (0)1249 822 300 www.bilgroup.co.uk
DRAWN	Matt	25/01/18	
APPROVED BY	Tim W	25/01/18	
SCALE	2:5	25/01/18	
WEIGHT	0.609kg	25/01/18	
UNLESS OTHERWISE SPECIFIED DIMENSIONS ARE IN MILLIMETRES Unspecified Tolerances Machining ± 0.25 mm Fabrication ± 1 mm			TITLE BZMM80RNBJEC
SIZE	DWG NO.	REV	
A4	BILCW03BZMM80RNBJEC_01	1	
FILE NAME	BILCW03BZMM80RNBJEC_01.PDF		SHEET 1 OF 1