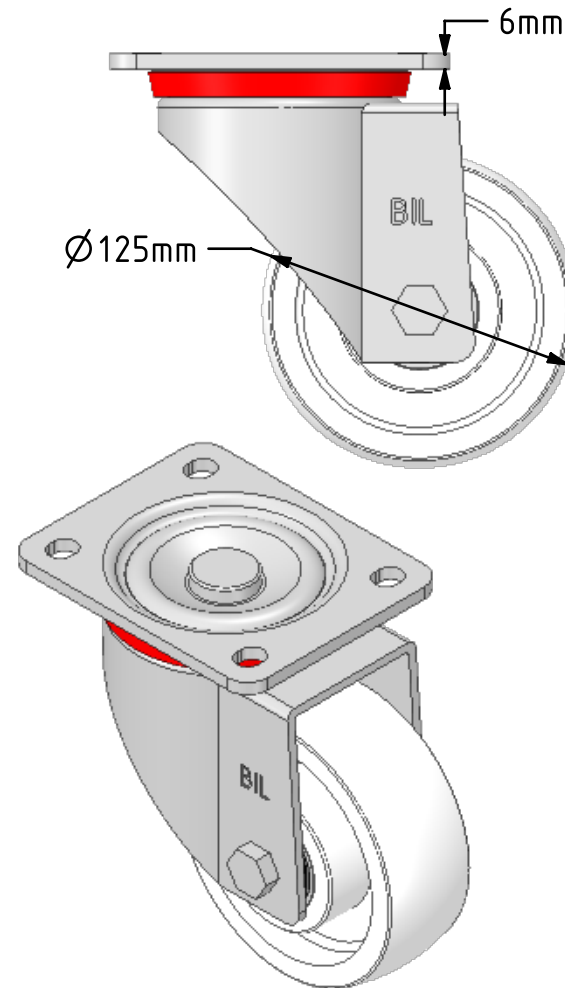
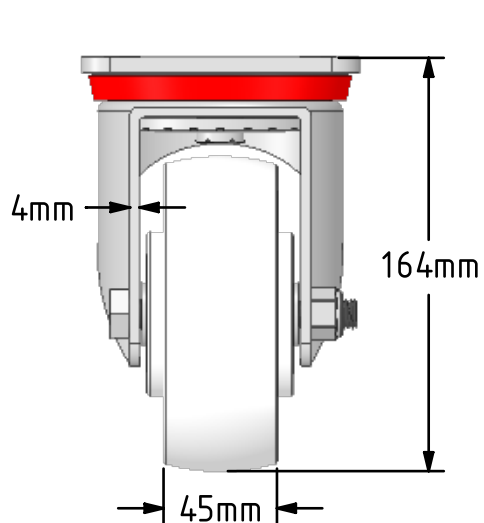
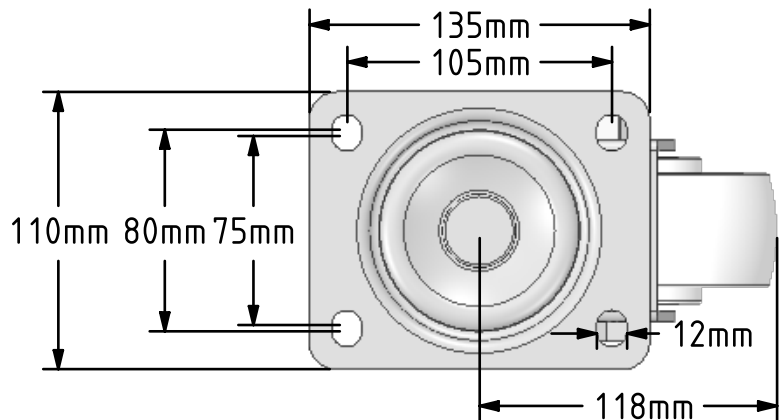
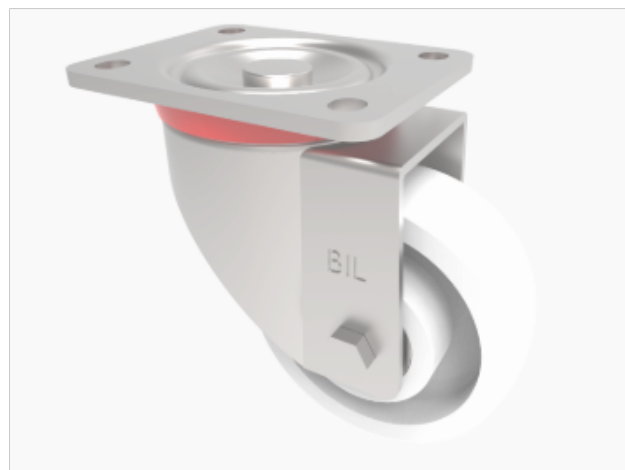


DRAWING DISCLAIMER
 COPYRIGHT OF THIS DRAWING IS RESERVED BY BIL GROUP LTD. IT IS ISSUED ON CONDITION THAT IT IS NOT REPRODUCED, COPIED, OR DISCLOSED TO A THIRD PARTY EITHER WHOLLY OR IN PART WITHOUT THE CONSENT IN WRITING OF BIL GROUP LTD.



Description:
 BZP125NYBJ

Pressed steel swivel castor with a top plate fixing fitted with a white nylon wheel with ball bearings. Wheel diameter 125mm, tread width 45mm, overall height 164mm, plate size 135x110mm, and hole centres 105mm x 80 mm. Load capacity 750kg.



	NAME	DATE
DRAWN	Matt	07/01/19
APPROVED BY	Chris	07/01/19
SCALE	1:3	07/01/19
WEIGHT	2.671kg	07/01/19

UNLESS OTHERWISE SPECIFIED DIMENSIONS ARE IN MILLIMETRES

Unspecified Tolerances
 Machining ± 0.25mm
 Fabrication ± 1mm



BIL Group Ltd, Porte Marsh Road, Calne
 Wiltshire, SN11 9BW, United Kingdom
 Tel +44 (0)1249 822 222 Fax: +44 (0)1249 822 300
 www.bilgroup.co.uk

TITLE

BZP125NYBJ

SIZE	DWG NO.	REV
A4	BILCW03BZP125NYBJ_01	1

FILE NAME BILCW03BZP125NYBJ_01.PDF SHEET 1 OF 1