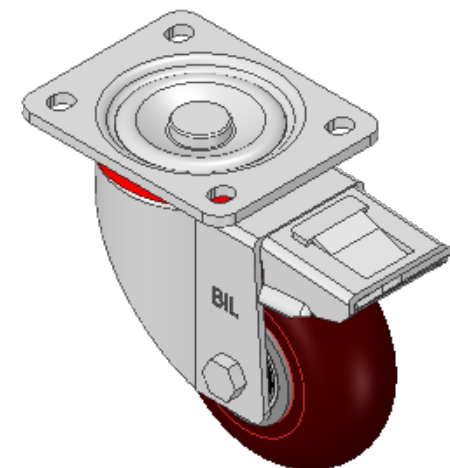
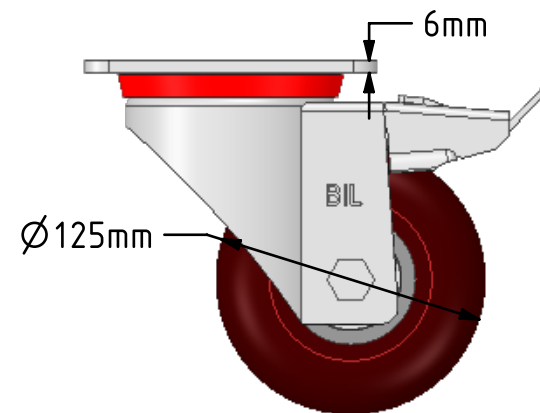
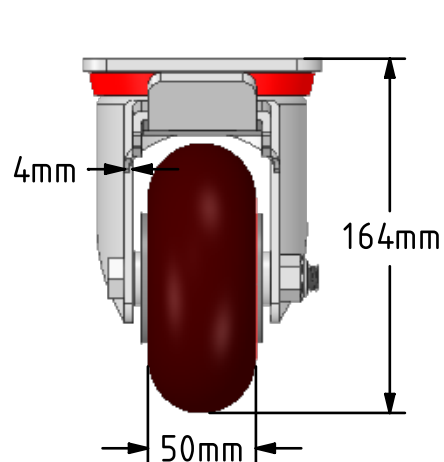
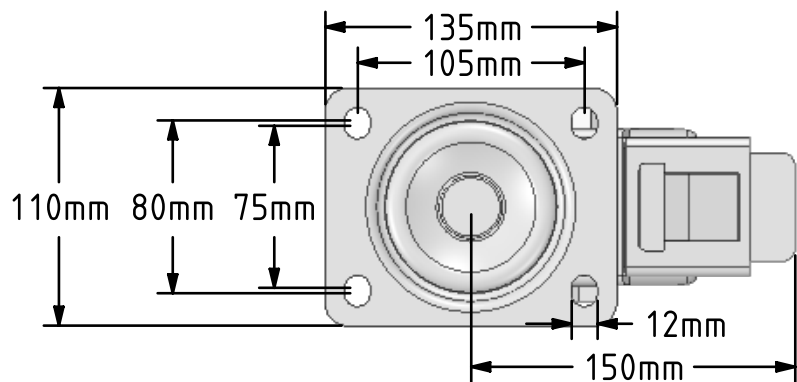


DRAWING DISCLAIMER
 COPYRIGHT OF THIS DRAWING IS RESERVED BY BIL GROUP LTD. IT IS ISSUED ON CONDITION THAT IT IS NOT REPRODUCED, COPIED, OR DISCLOSED TO A THIRD PARTY EITHER WHOLLY OR IN PART WITHOUT THE CONSENT IN WRITING OF BIL GROUP LTD.



Description:
 BZP125RPTABJSWB

Pressed steel swivel castor with a top plate fixing fitted with a ergonomic round polyurethane tyre aluminium centred wheel with a ball bearing. Wheel diameter 125mm, tread width 50mm, overall height 164mm, plate size 135mm x 110mm, hole centres 105mm x 80/75mm. Load capacity 450kg.



	NAME	DATE
DRAWN	Matt	22/02/19
APPROVED BY	Chris	22/02/19
SCALE	2:7	22/02/19
WEIGHT	3.379kg	22/02/19

UNLESS OTHERWISE SPECIFIED DIMENSIONS ARE IN MILLIMETRES

Unspecified Tolerances
 Machining ± 0.25mm
 Fabrication ± 1mm



BIL Group Ltd, Porte Marsh Road, Calne
 Wiltshire, SN11 9BW, United Kingdom
 Tel +44 (0)1249 822 222 Fax: +44 (0)1249 822 300
 www.bilgroup.co.uk

TITLE

BZP125RPTABJSWB

SIZE	DWG NO.	REV
A4	BILCW03BZP125RPTABJSWB_01	1

FILE NAME BILCW03BZP125RPTABJSWB_01.PDF SHEET 1 OF 1