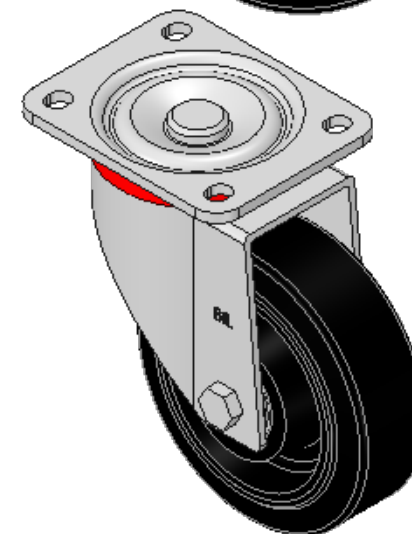
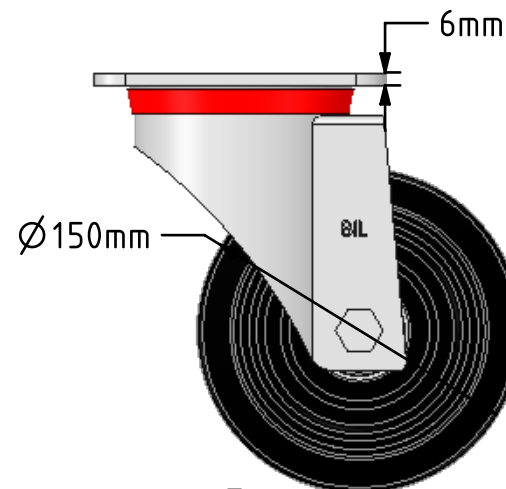
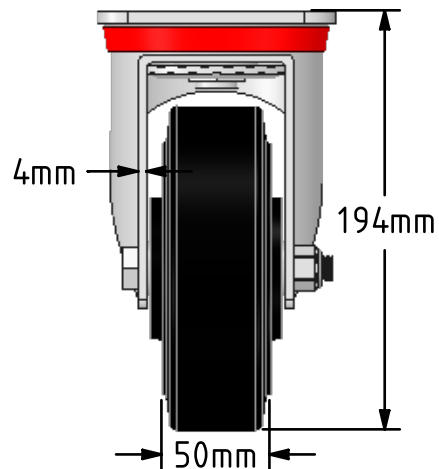
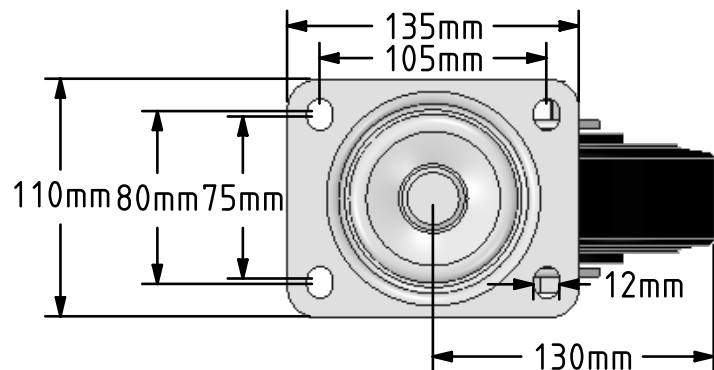
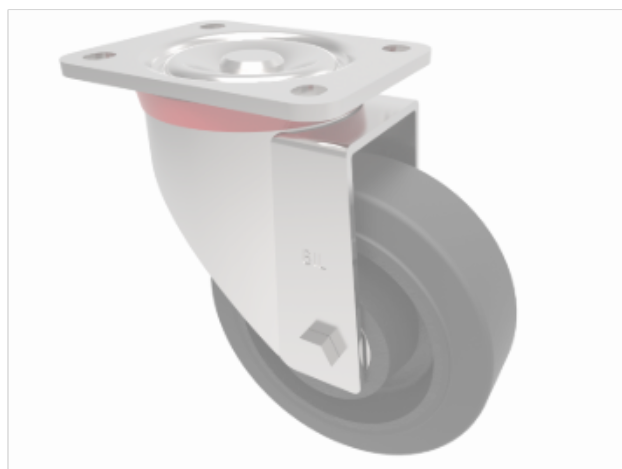


DRAWING DISCLAIMER
 COPYRIGHT OF THIS DRAWING IS RESERVED BY BIL GROUP LTD. IT IS ISSUED ON CONDITION THAT IT IS NOT REPRODUCED, COPIED, OR DISCLOSED TO A THIRD PARTY EITHER WHOLLY OR IN PART WITHOUT THE CONSENT IN WRITING OF BIL GROUP LTD.



Description:
 BZP150CRBJ

Pressed steel swivel castor with a flat plate fixing fitted with a black elastic rubber tyre on a cast iron centred wheel with a ball bearing. Wheel diameter 150mm, tread width 50mm, overall height 194mm, plate size 135mm x 110mm, hole centres 105mm x 80mm, Load capacity 350kg.



	NAME	DATE
DRAWN	Matt	19/02/18
APPROVED BY	Chris	19/02/18
SCALE	2:7	19/02/18
WEIGHT	4.791kg	19/02/18

 BIL Group Ltd, Porte Marsh Road, Calne Wiltshire, SN11 9BW, United Kingdom
 Tel +44 (0)1249 822 222 Fax: +44 (0)1249 822 300
 www.bilgroup.co.uk

TITLE	
BZP150CRBJ	

UNLESS OTHERWISE SPECIFIED DIMENSIONS ARE IN MILLIMETRES		SIZE	DWG NO.	REV
Unspecified Tolerances Machining ± 0.25mm Fabrication ± 1mm		A4	BILCW03BZP150CRBJ_01	1
FILE NAME		BILCW03BZP150CRBJ_01.PDF		SHEET 1 OF 1