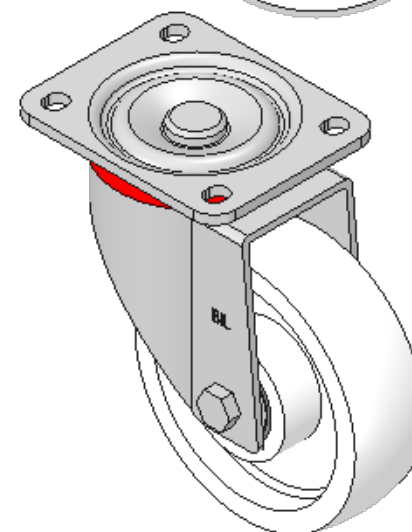
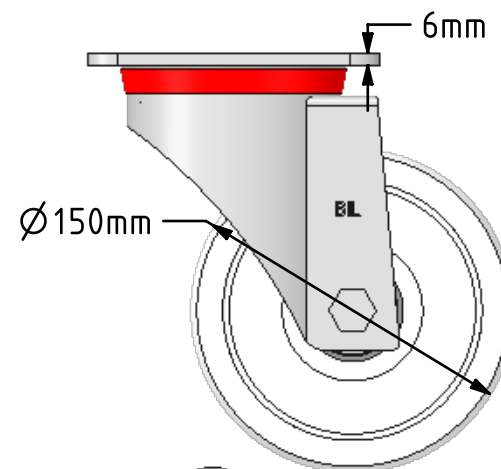
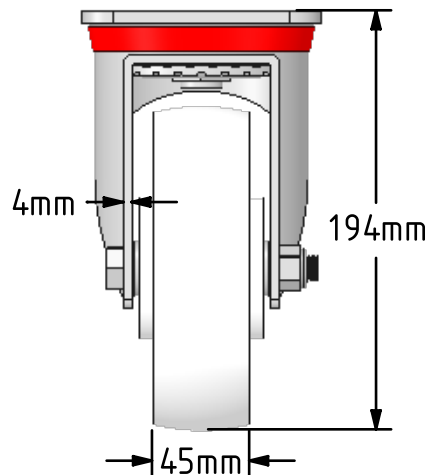
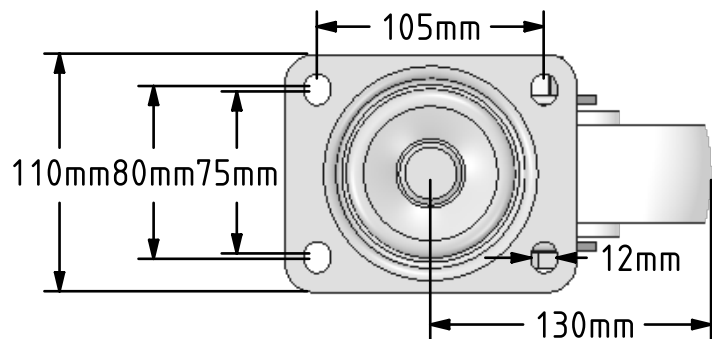
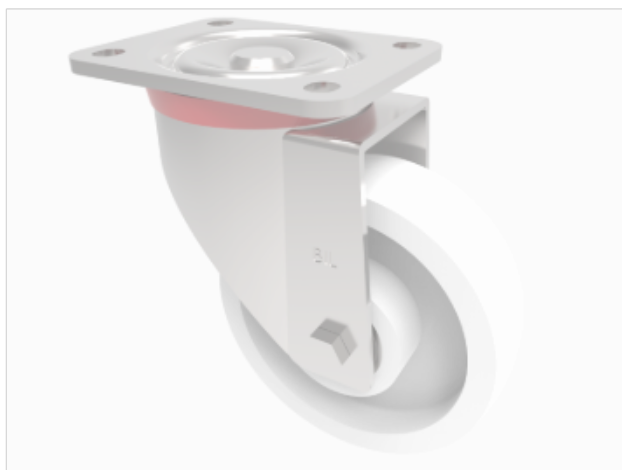


DRAWING DISCLAIMER
 COPYRIGHT OF THIS DRAWING IS RESERVED BY BIL GROUP LTD. IT IS ISSUED ON CONDITION THAT IT IS NOT REPRODUCED, COPIED, OR DISCLOSED TO A THIRD PARTY EITHER WHOLLY OR IN PART WITHOUT THE CONSENT IN WRITING OF BIL GROUP LTD.



Description:
 BZP150NYBJ

Pressed steel swivel castor with a flat plate fixing fitted with a white nylon wheel with ball bearings. Wheel diameter 150mm, tread width 45mm, overall height 194mm, plate size 135mm x 110mm, hole centres 105mm x 80mm, Load capacity 800kg.



	NAME	DATE
DRAWN	Matt	01/02/18
APPROVED BY	Chris	01/02/18
SCALE	2:7	01/02/18
WEIGHT	2.866kg	01/02/18

UNLESS OTHERWISE SPECIFIED DIMENSIONS ARE IN MILLIMETRES

Unspecified Tolerances
 Machining ± 0.25mm
 Fabrication ± 1mm



BIL Group Ltd, Porte Marsh Road, Calne
 Wiltshire, SN11 9BW, United Kingdom
 Tel +44 (0)1249 822 222 Fax: +44 (0)1249 822 300
 www.bilgroup.co.uk

TITLE

BZP150NYBJ

SIZE DWG NO.

A4

BILCW03BZP150NYBJ_01

REV

1

FILE NAME

BILCW03BZP150NYBJ_01.PDF

SHEET 1 OF 1