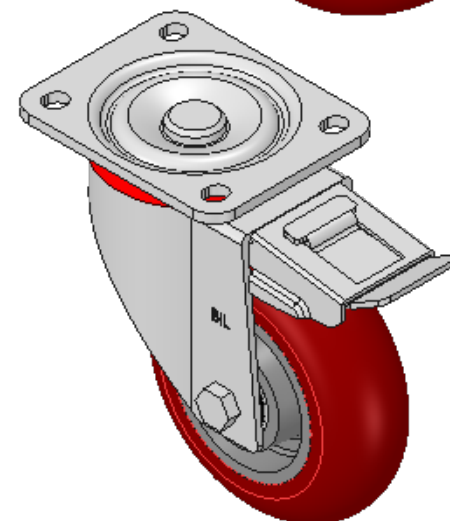
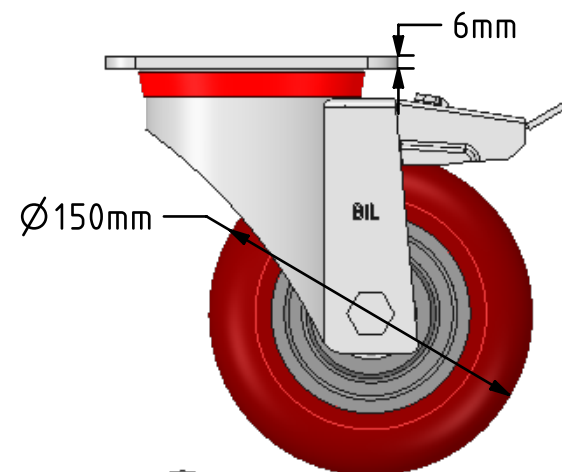
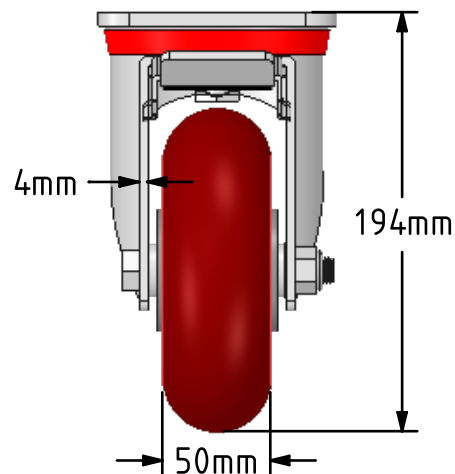
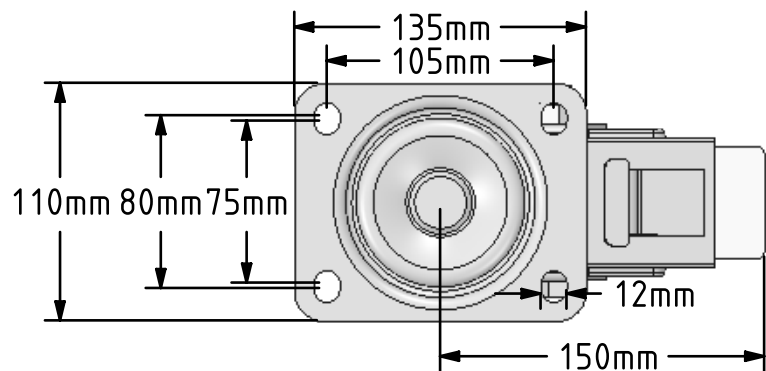


DRAWING DISCLAIMER
 COPYRIGHT OF THIS DRAWING IS RESERVED BY BIL GROUP LTD. IT IS ISSUED ON CONDITION THAT IT IS NOT REPRODUCED, COPIED, OR DISCLOSED TO A THIRD PARTY EITHER WHOLLY OR IN PART WITHOUT THE CONSENT IN WRITING OF BIL GROUP LTD.



Description:
 BZP150RPTABJSWB

Pressed steel swivel castor with a top plate fixing fitted with a Ergonomic round polyurethane tyred aluminium centred wheel with ball bearings and a total lock brake. Wheel diameter 150mm, tread width 50mm, overall height 194mm, plate size 135mm x 110mm, hole centres 105mm x 80mm. Load capacity 575kg.



	NAME	DATE
DRAWN	Matt	23/02/18
APPROVED BY	Chris	23/02/18
SCALE	2:7	23/02/18
WEIGHT	3.807kg	23/02/18

 BIL Group Ltd, Porte Marsh Road, Calne
 Wiltshire, SN11 9BW, United Kingdom
 Tel +44 (0)1249 822 222 Fax: +44 (0)1249 822 300
 www.bilgroup.co.uk

TITLE		
BZP150RPTABJSWB		
SIZE	DWG NO.	REV
A4	BILCW03BZP150RPTABJSWB_01	1

UNLESS OTHERWISE SPECIFIED DIMENSIONS ARE IN MILLIMETRES
 Unspecified Tolerances
 Machining ± 0.25mm
 Fabrication ± 1mm

FILE NAME BILCW03BZP150RPTABJSWB_01.PDF SHEET 1 OF 1