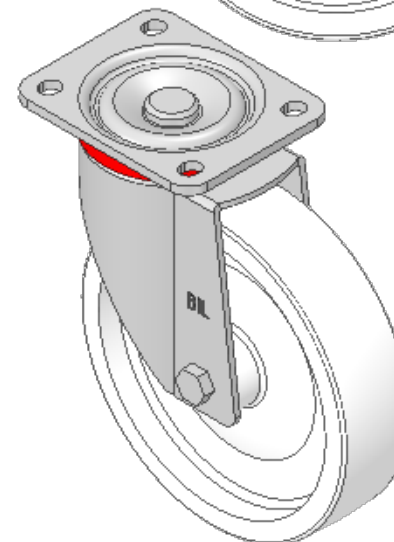
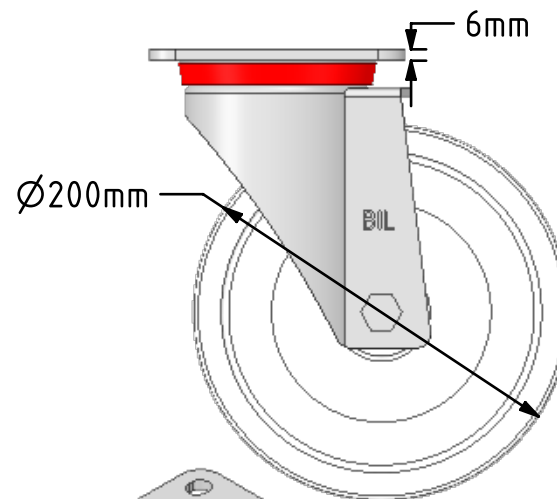
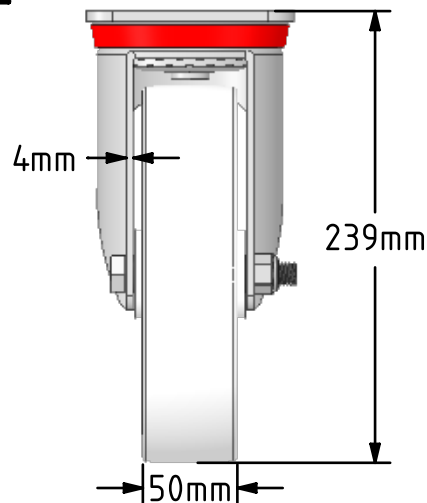
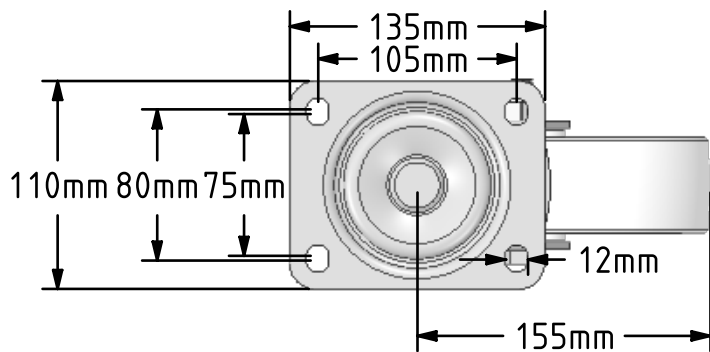


DRAWING DISCLAIMER
 COPYRIGHT OF THIS DRAWING IS RESERVED BY BIL GROUP LTD. IT IS ISSUED ON CONDITION THAT IT IS NOT REPRODUCED, COPIED, OR DISCLOSED TO A THIRD PARTY EITHER WHOLLY OR IN PART WITHOUT THE CONSENT IN WRITING OF BIL GROUP LTD.



Description:
 BZP200NYB

Pressed steel swivel castor with a flat plate fixing fitted with a white nylon wheel with a roller bearing. Wheel diameter 200mm, tread width 50mm, overall height 239mm, plate size 135mm x 110mm, hole centres 105mm x 80mm. Load capacity 800kg.



	NAME	DATE
DRAWN	Matt	08/01/19
APPROVED BY	Tim W	08/01/19
SCALE	1:4	08/01/19
WEIGHT	3.147kg	08/01/19

UNLESS OTHERWISE SPECIFIED DIMENSIONS ARE IN MILLIMETRES

Unspecified Tolerances
 Machining ± 0.25mm
 Fabrication ± 1mm



BIL Group Ltd, Porte Marsh Road, Calne
 Wiltshire, SN11 9BW, United Kingdom
 Tel +44 (0)1249 822 222 Fax: +44 (0)1249 822 300
 www.bilgroup.co.uk

TITLE

BZP200NYB

SIZE DWG NO.

A4

BILCW03BZP200NYB_01

REV

1

FILE NAME

BILCW03BZP200NYB_01.PDF

SHEET 1 OF 1