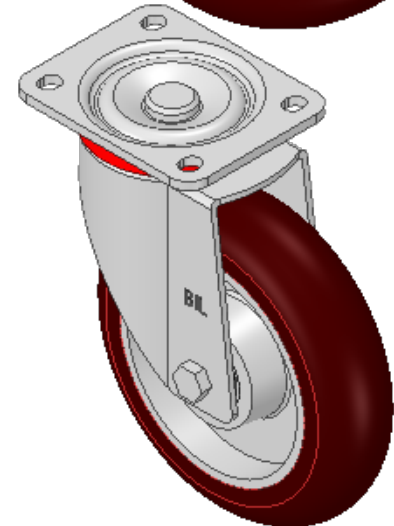
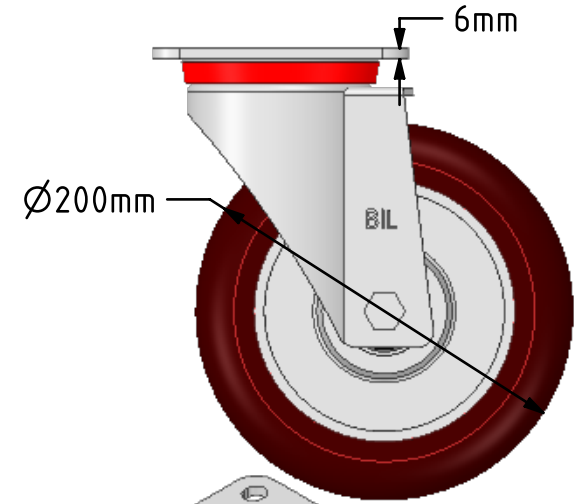
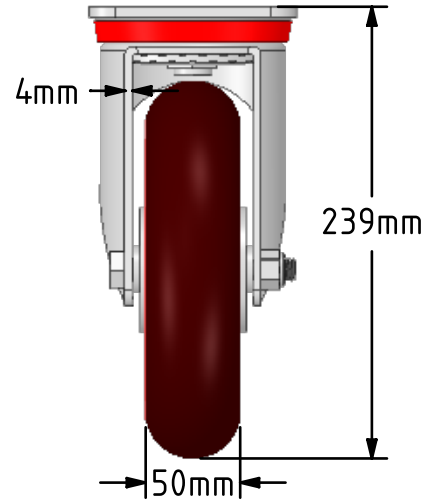
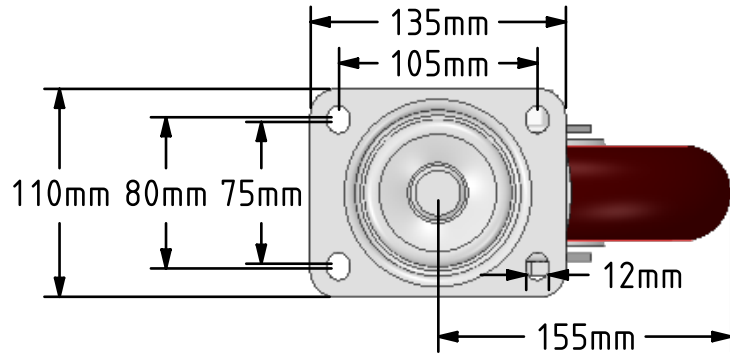


DRAWING DISCLAIMER
 COPYRIGHT OF THIS DRAWING IS RESERVED BY BIL GROUP LTD. IT IS ISSUED ON CONDITION THAT IT IS NOT REPRODUCED, COPIED, OR DISCLOSED TO A THIRD PARTY EITHER WHOLLY OR IN PART WITHOUT THE CONSENT IN WRITING OF BIL GROUP LTD.



Description:
 BZP200RPTABJ

Pressed steel swivel castor with a flat plate fixing fitted with a brown ergonomic polyurethane tyre on aluminium centred wheel with ball bearing. Wheel diameter 200mm, tread width 50mm, overall height 239mm, plate size 135mm x 110mm, hole centres 105mm x 80/75mm. Load capacity 775kg.



	NAME	DATE
DRAWN	Matt	22/02/19
APPROVED BY	Chris	22/02/19
SCALE	1:4	22/02/19
WEIGHT	4.229kg	22/02/19



BIL Group Ltd, Porte Marsh Road, Calne
 Wiltshire, SN11 9BW, United Kingdom
 Tel +44 (0)1249 822 222 Fax: +44 (0)1249 822 300
 www.bilgroup.co.uk

TITLE		
BZP200RPTABJ		
SIZE	DWG NO.	REV
A4	BILCW03BZP200RPTABJ_02	2
FILE NAME BILCW03BZP200RPTABJ_02.PDF		SHEET 1 OF 1

UNLESS OTHERWISE SPECIFIED DIMENSIONS ARE IN MILLIMETRES
 Unspecified Tolerances
 Machining ± 0.25mm
 Fabrication ± 1mm