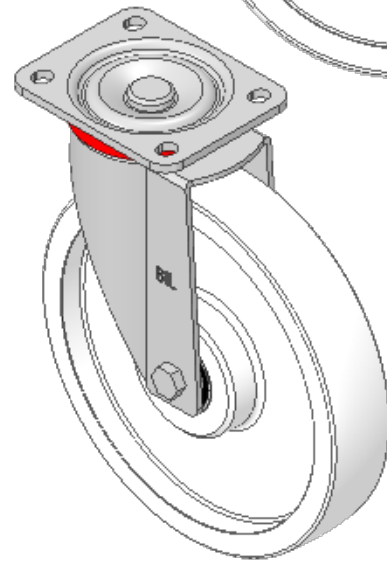
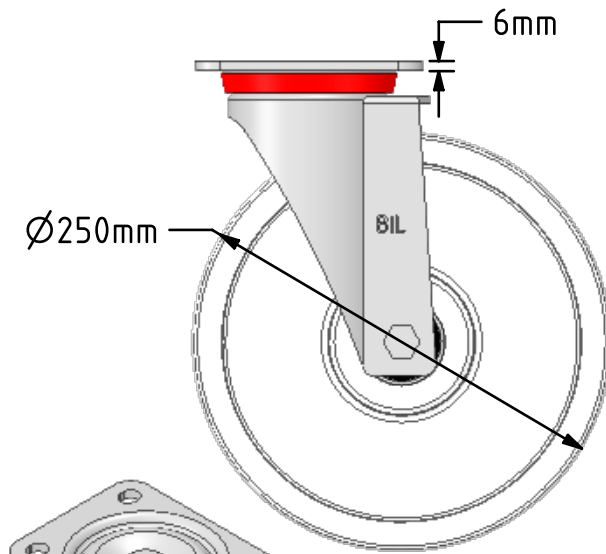
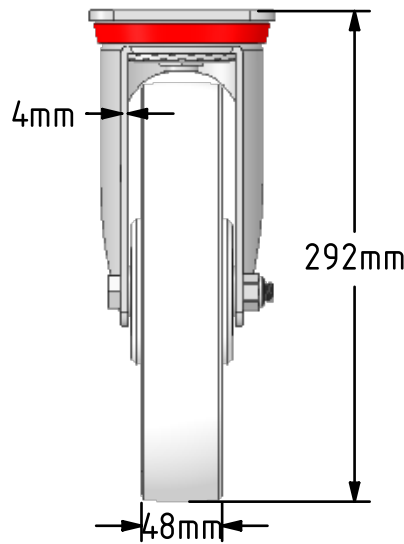
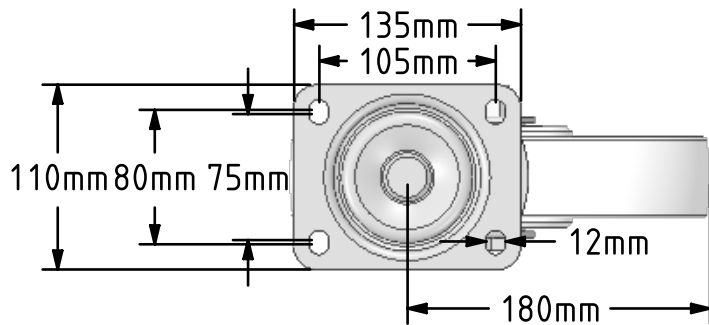
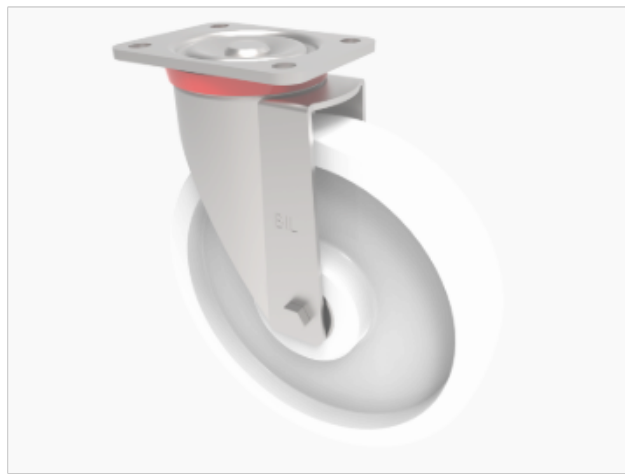



DRAWING DISCLAIMER
 COPYRIGHT OF THIS DRAWING IS RESERVED BY BIL GROUP LTD. IT IS ISSUED ON CONDITION THAT IT IS NOT REPRODUCED, COPIED, OR DISCLOSED TO A THIRD PARTY EITHER WHOLLY OR IN PART WITHOUT THE CONSENT IN WRITING OF BIL GROUP LTD.



Description:
BZP250NYBJ
 Pressed steel swivel castor with a flat plate fixing fitted with a white nylon wheel with ball bearings. Wheel diameter 250mm, tread width 48mm, overall height 292mm, plate size 135mm x 110mm, hole centres 105mm x 80mm . Load capacity 800kg.



	NAME	DATE	 BIL Group Ltd, Porte Marsh Road, Calne Wiltshire, SN11 9BW, United Kingdom Tel +44 (0)1249 822 222 Fax: +44 (0)1249 822 300 www.bilgroup.co.uk
DRAWN	Matt	09/01/19	
APPROVED BY	Tim W	09/01/19	
SCALE	2:9	09/01/19	
WEIGHT	4.143kg	09/01/19	
UNLESS OTHERWISE SPECIFIED DIMENSIONS ARE IN MILLIMETRES Unspecified Tolerances Machining ± 0.25mm Fabrication ± 1mm			TITLE BZP250NYBJ
SIZE	DWG NO.		REV
A4	BILCW03BZP250NYBJ_01		1
FILE NAME	BILCW03BZP250NYBJ_01.PDF		SHEET 1 OF 1