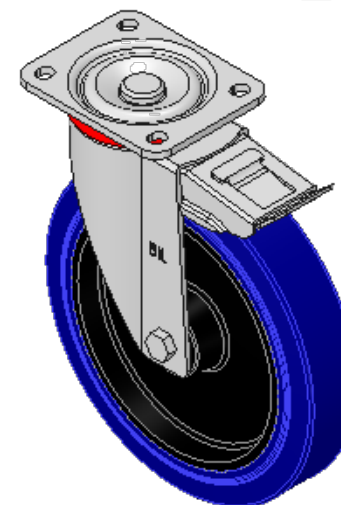
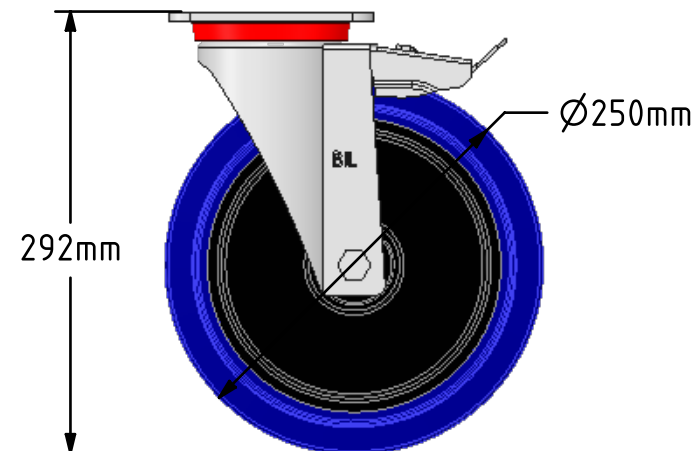
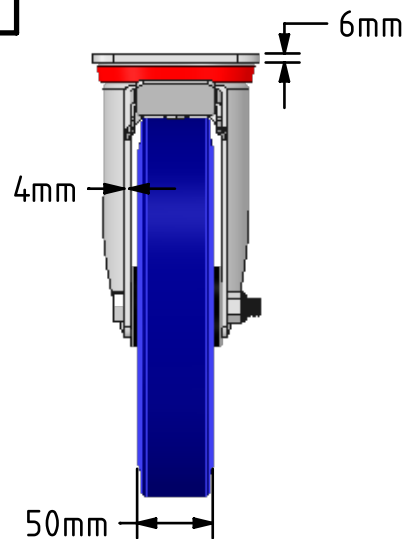
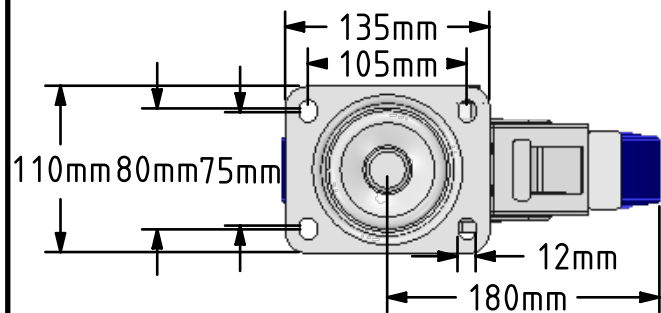
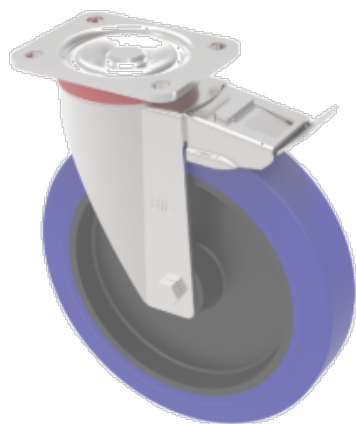


DRAWING DISCLAIMER
 COPYRIGHT OF THIS DRAWING IS RESERVED BY BIL GROUP LTD. IT IS ISSUED ON CONDITION THAT IT IS NOT REPRODUCED, COPIED, OR DISCLOSED TO A THIRD PARTY EITHER WHOLLY OR IN PART WITHOUT THE CONSENT IN WRITING OF BIL GROUP LTD.



Description:
 BZP250RNBSWB

Pressed steel swivel castor with a flat plate fixing fitted with a blue elastic rubber tyre on black nylon centred wheel with roller bearing and total lock brake. Wheel diameter 250mm, tread width 50mm, overall height 292mm, plate size 135mm x 110mm, hole centres 105mm x 80mm. Load capacity 500kg.



	NAME	DATE
DRAWN	Matt	09/02/17
APPROVED BY	Chris	09/02/17
SCALE	1:5	09/02/17
WEIGHT	4.594kg	09/02/17

 BIL Group Ltd, Porte Marsh Road, Calne
 Wiltshire, SN11 9BW, United Kingdom
 Tel +44 (0)1249 822 222 Fax: +44 (0)1249 822 300
 www.bilgroup.co.uk

TITLE	BZP250RNBSWB	
-------	--------------	--

UNLESS OTHERWISE SPECIFIED DIMENSIONS ARE IN MILLIMETRES
 Unspecified Tolerances
 Machining ± 0.25mm
 Fabrication ± 1mm

SIZE	DWG NO.	REV
A4	BILCW03BZP250RNBSWB_01	1
FILE NAME	BILCW03BZP250RNBSWB_01.PDF SHEET 1 OF 1	