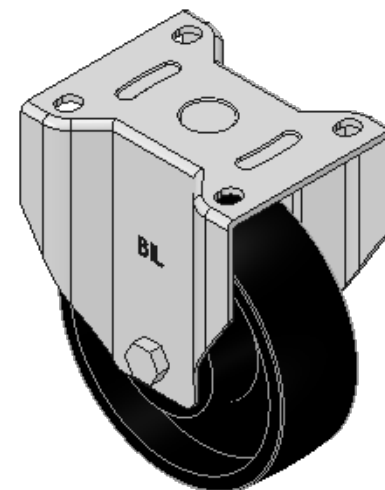
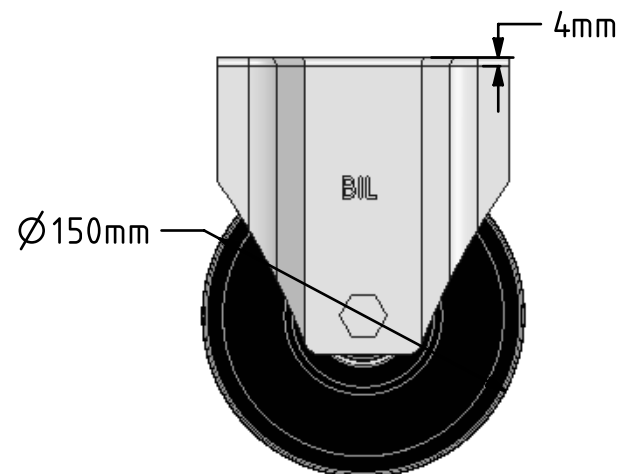
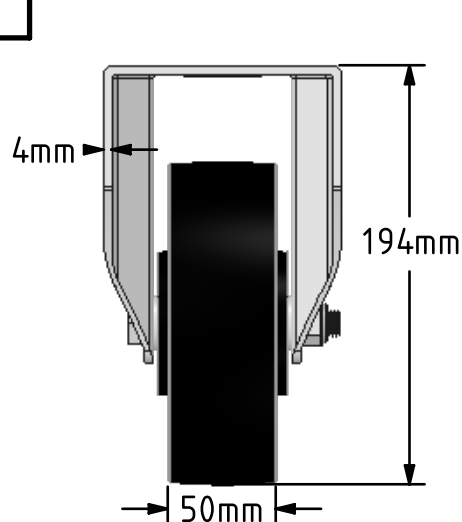
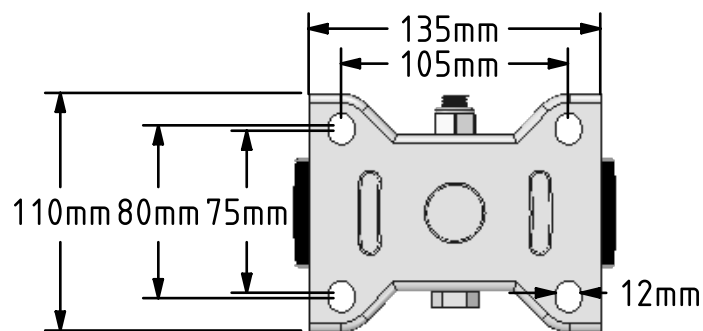



DRAWING DISCLAIMER  
 COPYRIGHT OF THIS DRAWING IS RESERVED BY BIL GROUP LTD. IT IS ISSUED ON CONDITION THAT IT IS NOT REPRODUCED, COPIED, OR DISCLOSED TO A THIRD PARTY EITHER WHOLLY OR IN PART WITHOUT THE CONSENT IN WRITING OF BIL GROUP LTD.



Description:  
 BZPF150CIBJ

Pressed steel fixed castor with a flat plate fixing fitted with a black cast iron wheel with a ball bearing bore. Wheel diameter 150mm, tread width 50mm, overall height 194mm, plate size 135mm x 110mm, hole centres 105mm x 80mm, Load capacity 800kg.



	NAME	DATE	 BIL Group Ltd, Porte Marsh Road, Calne Wiltshire, SN11 9BW, United Kingdom Tel +44 (0)1249 822 222 Fax: +44 (0)1249 822 300 www.bilgroup.co.uk
DRAWN	Matt	22/02/18	
APPROVED BY	Tim W	22/02/18	
SCALE	2:7	22/02/18	
WEIGHT	4.619kg	22/02/18	TITLE
UNLESS OTHERWISE SPECIFIED DIMENSIONS ARE IN MILLIMETRES  Unspecified Tolerances Machining ± 0.25mm Fabrication ± 1mm			BZPF150CIBJ
SIZE	DWG NO.		REV
A4	BILCW03BZPF150CIBJ__01		1
FILE NAME	BILCW03BZPF150CIBJ__01.PDF		SHEET 1 OF 1