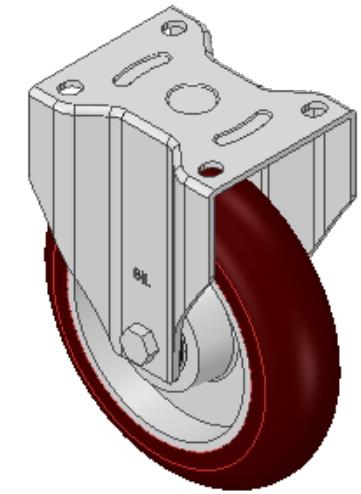
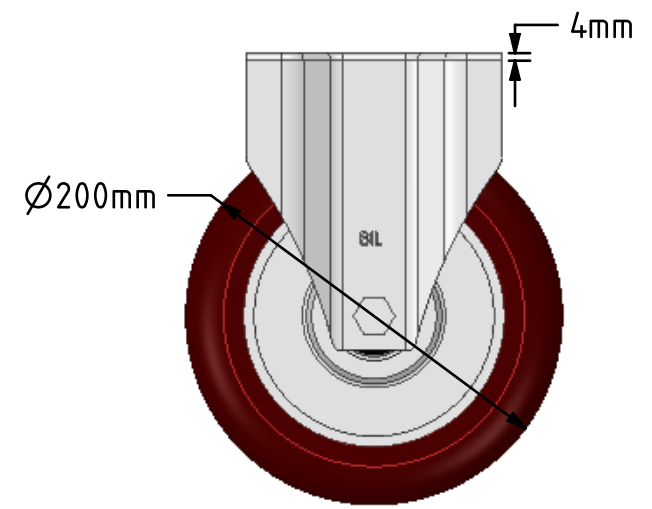
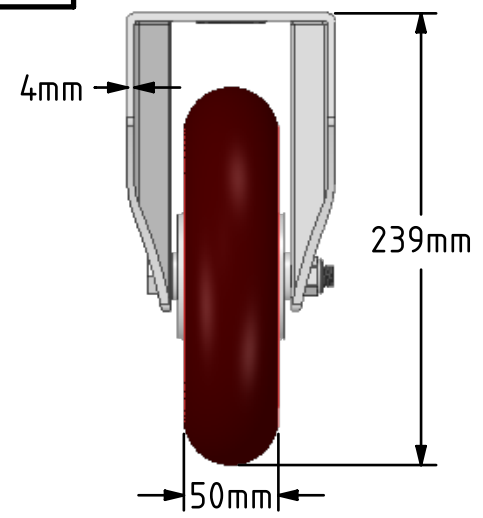
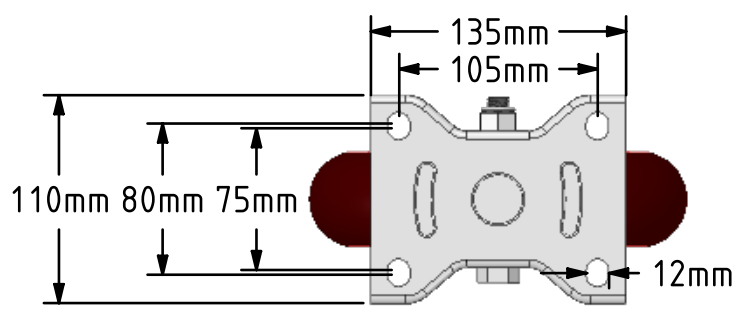
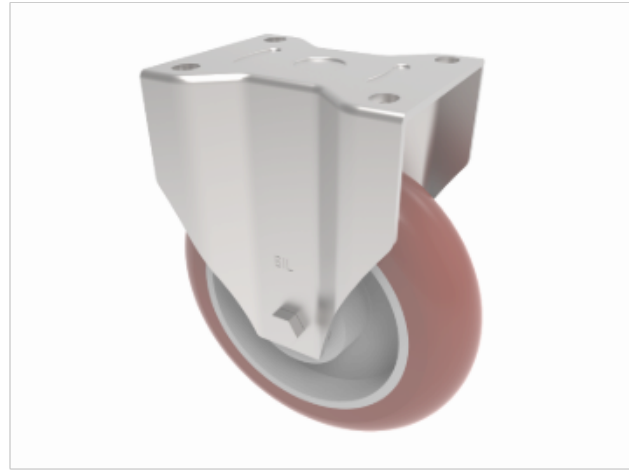


**DRAWING DISCLAIMER**  
 COPYRIGHT OF THIS DRAWING IS RESERVED BY BIL GROUP LTD. IT IS ISSUED ON CONDITION THAT IT IS NOT REPRODUCED, COPIED, OR DISCLOSED TO A THIRD PARTY EITHER WHOLLY OR IN PART WITHOUT THE CONSENT IN WRITING OF BIL GROUP LTD.



**Description:**  
 BZPF200RPTABJ  
 Pressed steel fixed castor with a flat plate fixing fitted with a brown ergonomic polyurethane tyre on aluminium centred wheel with ball bearing. Wheel diameter 200mm, tread width 50mm, overall height 239mm, plate size 135mm x 110mm, hole centres 105mm x 80/75mm. Load capacity 775kg.



	NAME	DATE
DRAWN	Matt	22/02/19
APPROVED BY	Chris	22/02/19
SCALE	1:4	22/02/19
WEIGHT	3.377kg	22/02/19

**BIL** BIL Group Ltd, Porte Marsh Road, Calne  
 Wiltshire, SN11 9BW, United Kingdom  
 Tel +44 (0)1249 822 222 Fax: +44 (0)1249 822 300  
 www.bilgroup.co.uk

TITLE  
**BZPF200RPTABJ**

UNLESS OTHERWISE SPECIFIED DIMENSIONS ARE IN MILLIMETRES  
 Unspecified Tolerances  
 Machining ± 0.25mm  
 Fabrication ± 1mm

SIZE	DWG NO.	REV
A4	BILCW03BZPF200RPTABJ__02	2
FILE NAME	BILCW03BZPF200RPTABJ__02.PDF SHEET 1 OF 1	