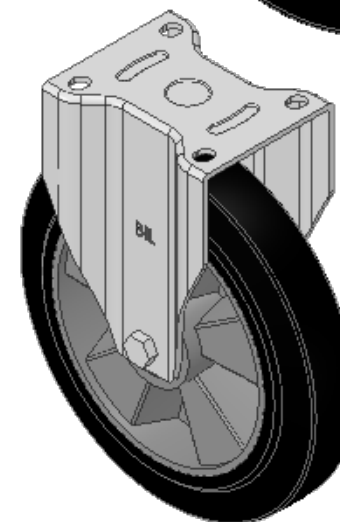
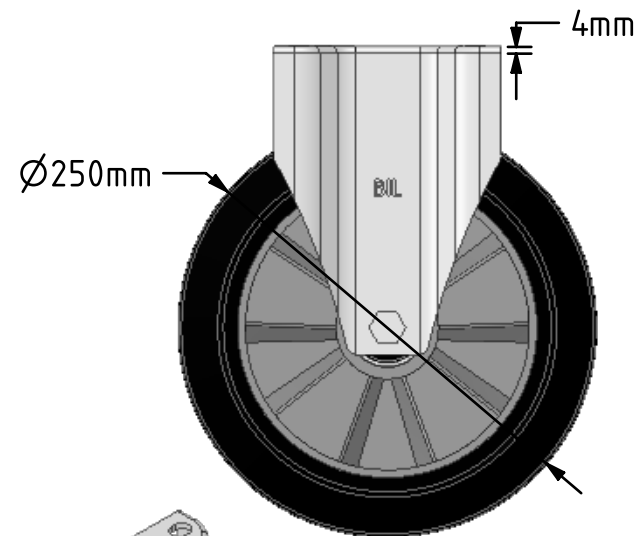
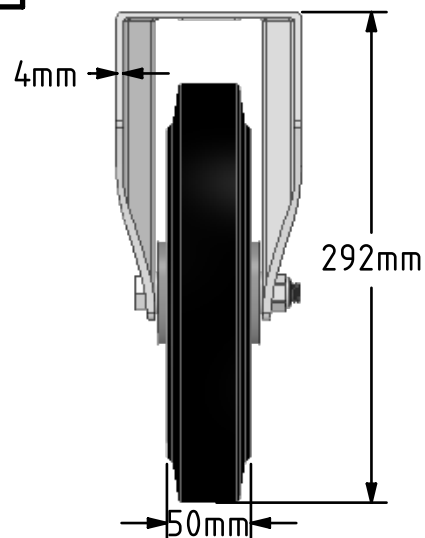
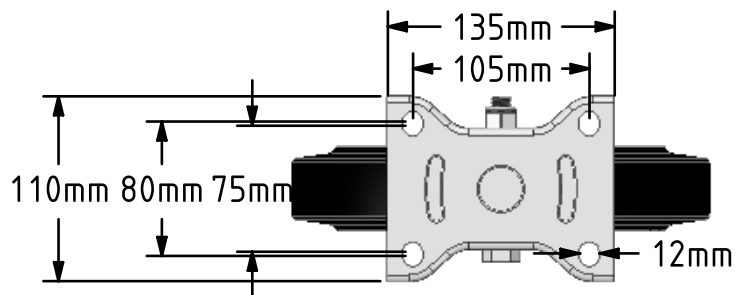


DRAWING DISCLAIMER  
 COPYRIGHT OF THIS DRAWING IS RESERVED BY BIL GROUP LTD. IT IS ISSUED ON CONDITION THAT IT IS NOT REPRODUCED, COPIED, OR DISCLOSED TO A THIRD PARTY EITHER WHOLLY OR IN PART WITHOUT THE CONSENT IN WRITING OF BIL GROUP LTD.



**Description:**  
 BZPF250ERBJ

Pressed steel fixed castor with a flat plate fixing fitted with a black high elastic natural 65 shore A rubber tyre on aluminium centred wheel with a ball bearing. Wheel diameter 250mm, tread width 50mm, overall height 292mm, plate size 135mm x 110mm, hole centres 105mm x 80/75mm. Load capacity 650kg. REACH compliant also PAH-Free rubber to confirm to EU-directive 2005/69/EC



	NAME	DATE
DRAWN	Matt	31/01/19
APPROVED BY	Chris	31/01/19
SCALE	2:9	31/01/19
WEIGHT	3.723kg	31/01/19

**BIL** Group Ltd, Porte Marsh Road, Calne  
 Wiltshire, SN11 9BW, United Kingdom  
 Tel +44 (0)1249 822 222 Fax: +44 (0)1249 822 300  
 www.bilgroup.co.uk

TITLE  
**BZPF250ERBJ**

UNLESS OTHERWISE SPECIFIED DIMENSIONS ARE IN MILLIMETRES  
 Unspecified Tolerances  
 Machining ± 0.25mm  
 Fabrication ± 1mm

SIZE	DWG NO.	REV
A4	BILCW03BZPF250ERBJ_01	1
FILE NAME	BILCW03BZPF250ERBJ_01.PDF	SHEET 1 OF 1