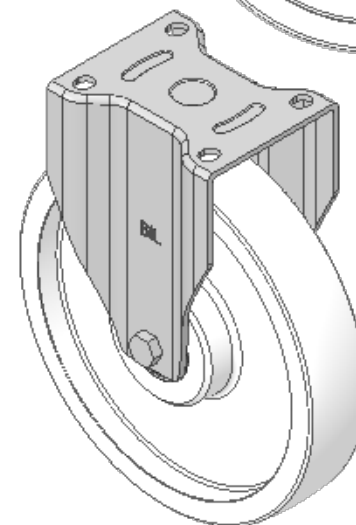
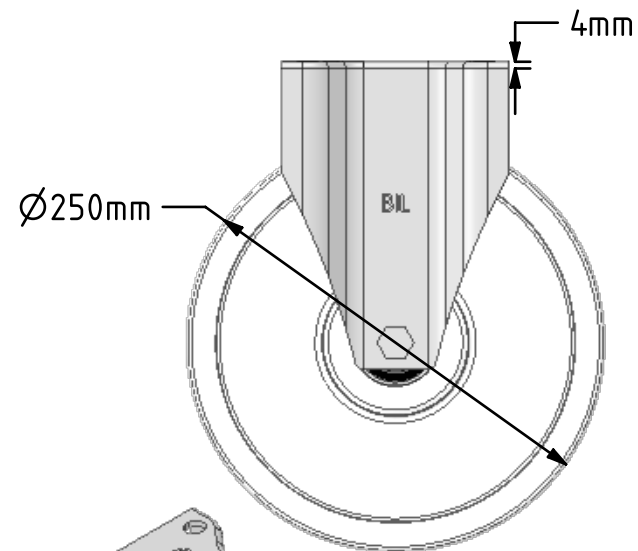
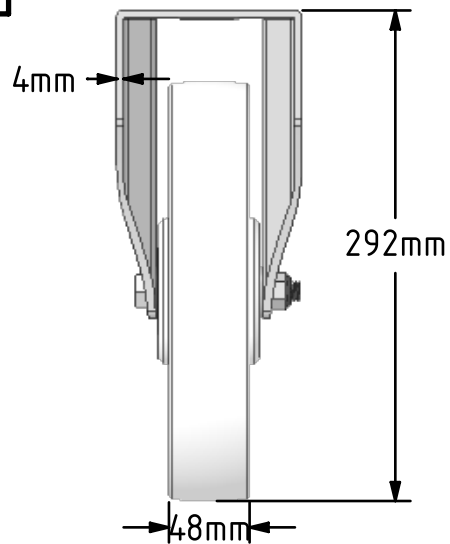
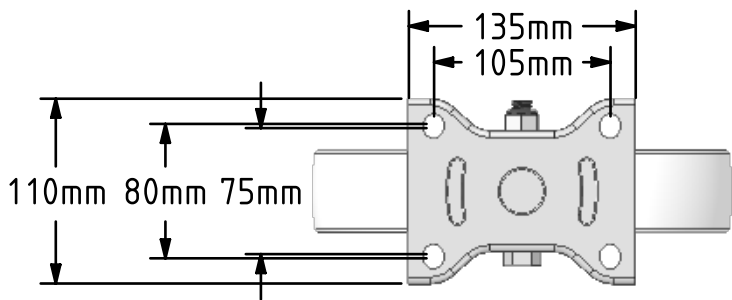


DRAWING DISCLAIMER
 COPYRIGHT OF THIS DRAWING IS RESERVED BY BIL GROUP LTD. IT IS ISSUED ON CONDITION THAT IT IS NOT REPRODUCED, COPIED, OR DISCLOSED TO A THIRD PARTY EITHER WHOLLY OR IN PART WITHOUT THE CONSENT IN WRITING OF BIL GROUP LTD.



Description:
 BZPF250NYBJ

Pressed steel fixed castor with a flat plate fixing fitted with a white nylon wheel with ball bearings. Wheel diameter 250mm, tread width 48mm, overall height 292mm, plate size 135mm x 110mm, hole centres 105mm x 80/75mm. Load capacity 800kg.



	NAME	DATE
DRAWN	Matt	10/01/19
APPROVED BY	Chris	10/01/19
SCALE	2:9	10/01/19
WEIGHT	3.255kg	10/01/19

BIL Group Ltd, Porte Marsh Road, Calne
 Wiltshire, SN11 9BW, United Kingdom
 Tel +44 (0)1249 822 222 Fax: +44 (0)1249 822 300
 www.bilgroup.co.uk

TITLE
BZPF250NYBJ

UNLESS OTHERWISE SPECIFIED DIMENSIONS ARE IN MILLIMETRES
 Unspecified Tolerances
 Machining ± 0.25mm
 Fabrication ± 1mm

SIZE	DWG NO.	REV
A4	BILCW03BZPF250NYBJ_01	1
FILE NAME	BILCW03BZPF250NYBJ_01.PDF SHEET 1 OF 1	