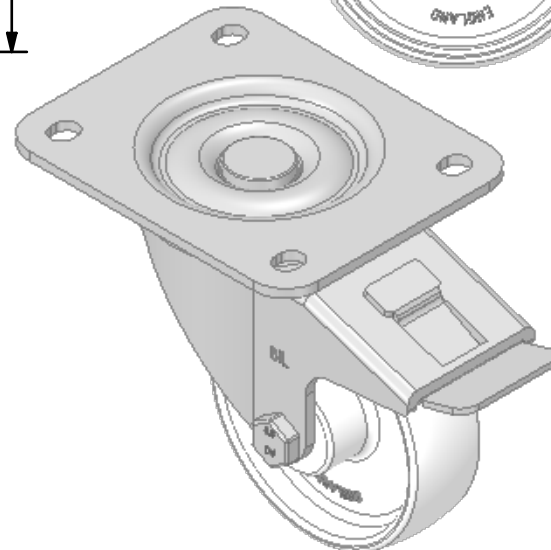
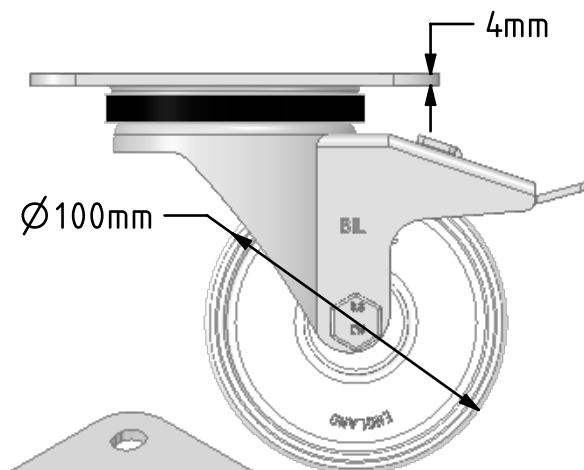
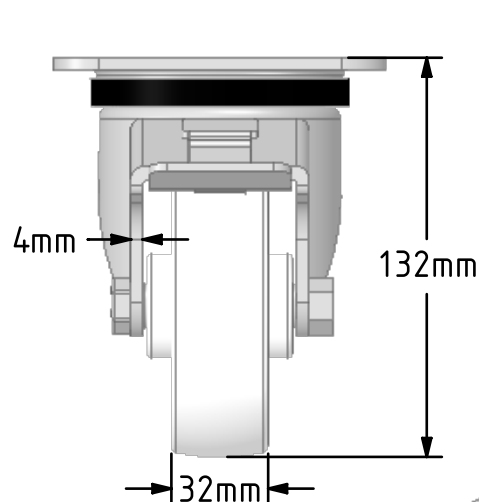
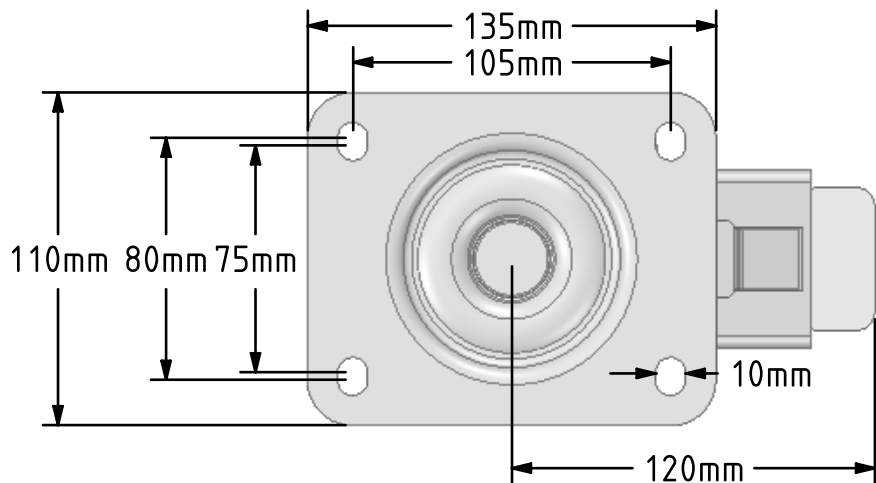


DRAWING DISCLAIMER
 COPYRIGHT OF THIS DRAWING IS RESERVED BY BIL GROUP LTD. IT IS ISSUED ON CONDITION THAT IT IS NOT REPRODUCED, COPIED, OR DISCLOSED TO A THIRD PARTY EITHER WHOLLY OR IN PART WITHOUT THE CONSENT IN WRITING OF BIL GROUP LTD.



Description:
 BZPH100NYBSWB

Pressed steel swivel castor with a top plate fixing fitted with a white nylon wheel with a roller bearing and a total lock brake. Wheel diameter 100mm, tread width 32mm, overall height 132mm, top plate 135mm x 110mm, hole centres 105mm x 80/75mm. Load capacity 270kg.



	NAME	DATE
DRAWN	Matt	24/09/18
APPROVED BY	Chris	24/09/18
SCALE	2:5	24/09/18
WEIGHT	1.339kg	24/09/18



BIL Group Ltd, Porte Marsh Road, Calne
 Wiltshire, SN11 9BW, United Kingdom
 Tel +44 (0)1249 822 222 Fax: +44 (0)1249 822 300
 www.bilgroup.co.uk

TITLE		REV
BZPH100NYBSWB		1
SIZE	DWG NO.	REV
A4	BILCW03BZPH100NYBSWB_01	1
FILE NAME	SHEET 1 OF 1	
BILCW03BZPH100NYBSWB_01.PDF		

UNLESS OTHERWISE SPECIFIED DIMENSIONS ARE IN MILLIMETRES

Unspecified Tolerances
 Machining ± 0.25mm
 Fabrication ± 1mm