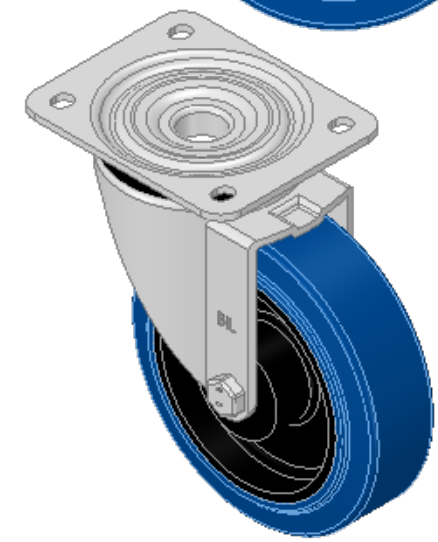
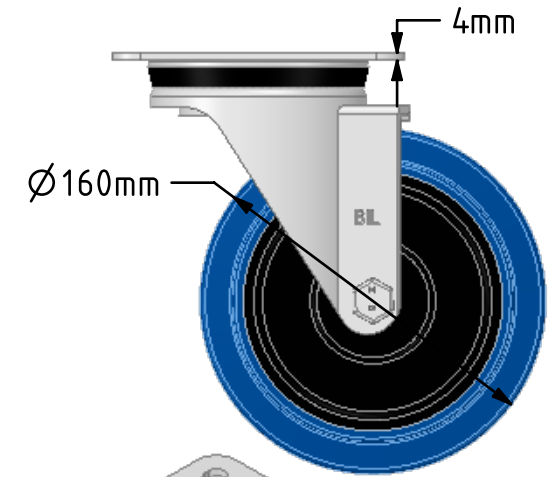
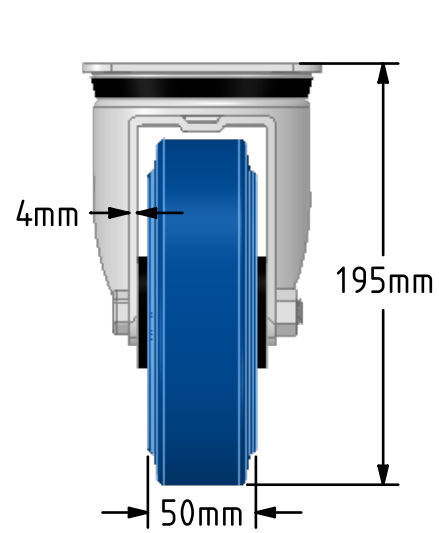
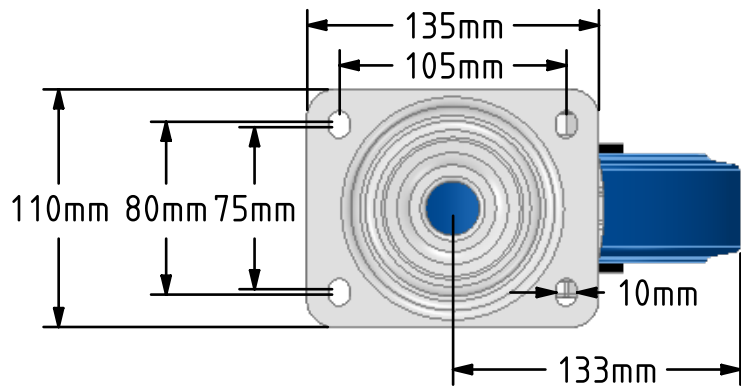
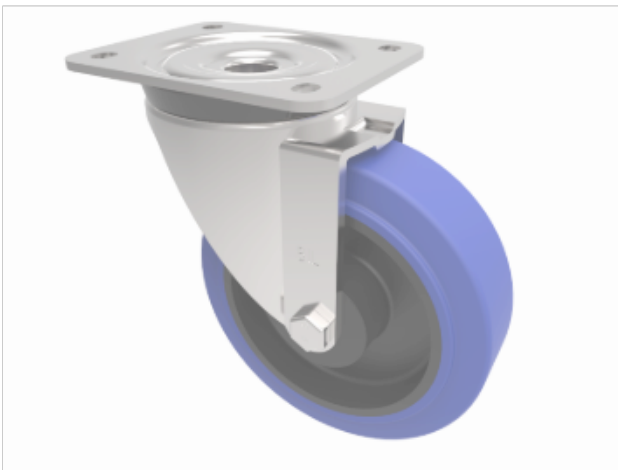


**DRAWING DISCLAIMER**  
 COPYRIGHT OF THIS DRAWING IS RESERVED BY BIL GROUP LTD. IT IS ISSUED ON CONDITION THAT IT IS NOT REPRODUCED, COPIED, OR DISCLOSED TO A THIRD PARTY EITHER WHOLLY OR IN PART WITHOUT THE CONSENT IN WRITING OF BIL GROUP LTD.



**Description:**  
 BZPH160RNB  
 Pressed steel swivel castor with a flat plate fixing fitted with a blue 75 shore A elastic rubber tyre on black nylon centred wheel with a roller bearing. Wheel diameter 160mm, tread width 50mm, overall height 195mm, plate size 135mm x 110mm, hole centres 105mm x 80mm/75mm. Load capacity 300kg.



|             | NAME    | DATE     |
|-------------|---------|----------|
| DRAWN       | Matt    | 07/11/18 |
| APPROVED BY | Chris   | 07/11/18 |
| SCALE       | 2:7     | 07/11/18 |
| WEIGHT      | 2.322kg | 07/11/18 |

**BIL** BIL Group Ltd, Porte Marsh Road, Calne  
 Wiltshire, SN11 9BW, United Kingdom  
 Tel +44 (0)1249 822 222 Fax: +44 (0)1249 822 300  
 www.bilgroup.co.uk

TITLE  
**BZPH160RNB**

UNLESS OTHERWISE SPECIFIED DIMENSIONS ARE IN MILLIMETRES  
 Unspecified Tolerances  
 Machining ± 0.25mm  
 Fabrication ± 1mm

| SIZE      | DWG NO.                  | REV          |
|-----------|--------------------------|--------------|
| A4        | BILCW03BZPH160RNB_01     | 1            |
| FILE NAME | BILCW03BZPH160RNB_01.PDF | SHEET 1 OF 1 |