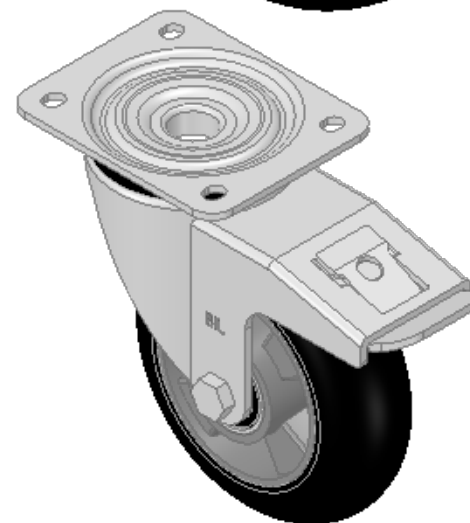
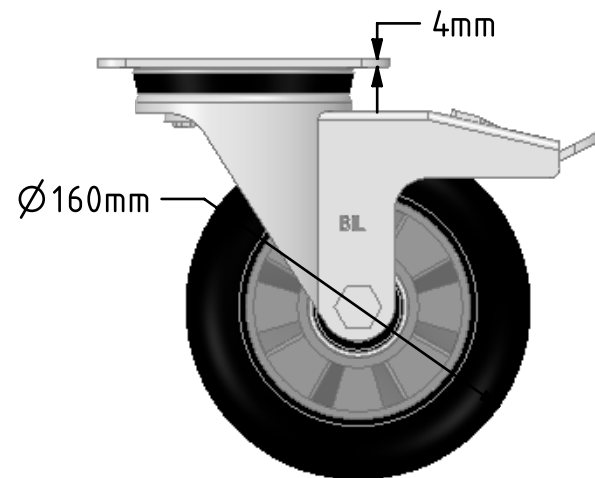
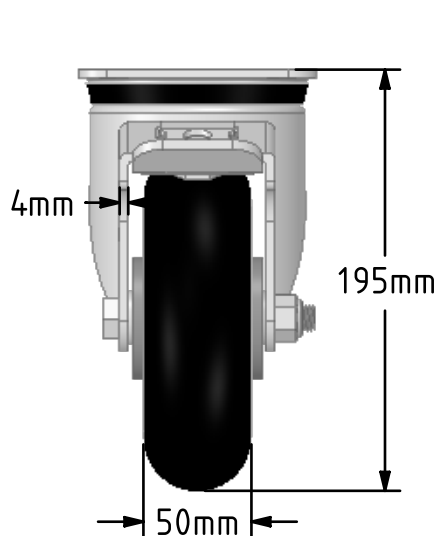
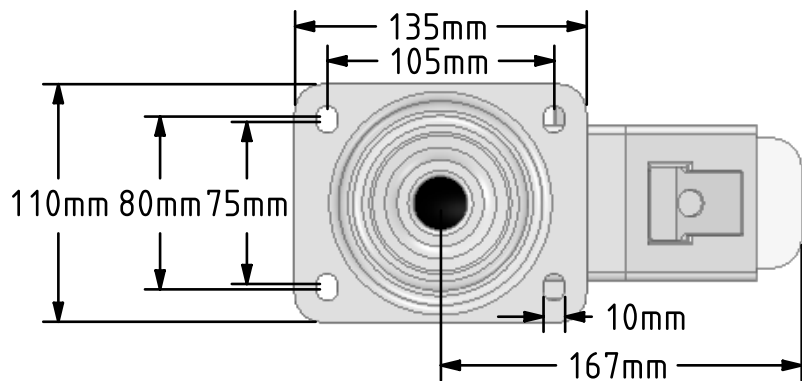


DRAWING DISCLAIMER
 COPYRIGHT OF THIS DRAWING IS RESERVED BY BIL GROUP LTD. IT IS ISSUED ON CONDITION THAT IT IS NOT REPRODUCED, COPIED, OR DISCLOSED TO A THIRD PARTY EITHER WHOLLY OR IN PART WITHOUT THE CONSENT IN WRITING OF BIL GROUP LTD.



Description:
 BZPH160SRERBJSWB

Pressed steel swivel castor with a top plate fixing fitted with an ergonomic black high elastic natural 55 shore A round profile rubber tyre aluminium centred wheel with ball bearings and a total lock brake. Wheel diameter 160mm, tread width 50mm, overall height 195mm, top plate 135mm x 110mm, hole centres 105mm x 80mm. Load capacity 300kg. REACH compliant also PAH-Free rubber to confirm to EU-directive 2005/69/EC also available with flat tread details on request



	NAME	DATE
DRAWN	Matt	14/11/18
APPROVED BY	Chris	14/11/18
SCALE	2:7	14/11/18
WEIGHT	3.041kg	14/11/18

UNLESS OTHERWISE SPECIFIED DIMENSIONS ARE IN MILLIMETRES

Unspecified Tolerances
 Machining ± 0.25mm
 Fabrication ± 1mm



BIL Group Ltd, Porte Marsh Road, Calne
 Wiltshire, SN11 9BW, United Kingdom
 Tel +44 (0)1249 822 222 Fax: +44 (0)1249 822 300
 www.bilgroup.co.uk

TITLE

BZPH160SRERBJSWB

SIZE	DWG NO.	REV
A4	BILCW03BZPH160SRERBJSWB_01	1

FILE NAME BILCW03BZPH160SRERBJSWB_01.PDF SHEET 1 OF 1