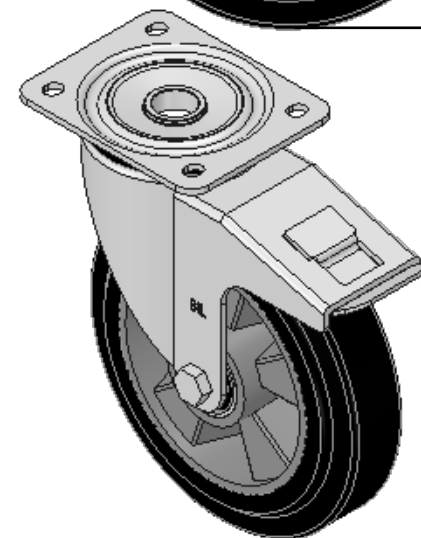
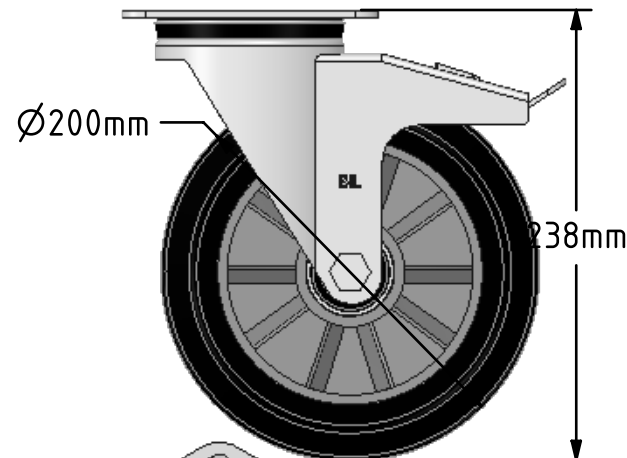
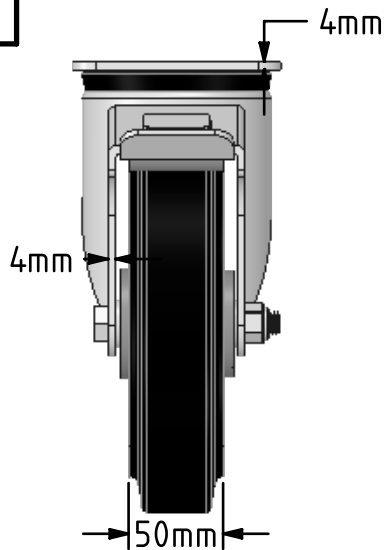
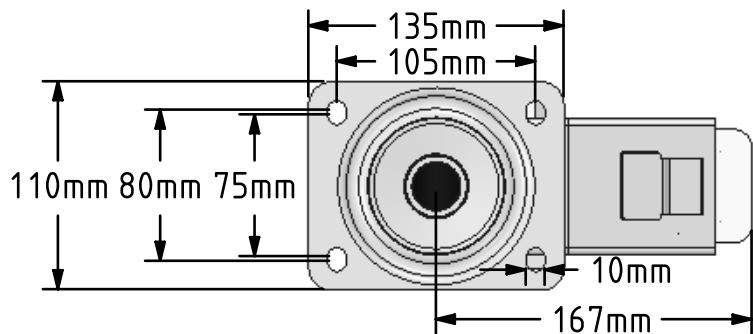


DRAWING DISCLAIMER  
 COPYRIGHT OF THIS DRAWING IS RESERVED BY BIL GROUP LTD. IT IS ISSUED ON CONDITION THAT IT IS NOT REPRODUCED, COPIED, OR DISCLOSED TO A THIRD PARTY EITHER WHOLLY OR IN PART WITHOUT THE CONSENT IN WRITING OF BIL GROUP LTD.



**Description:**  
 BZPH200ERBJSWB

Pressed steel swivel castor with a top plate fixing fitted with a black high elastic natural 65 shore A rubber tyred on an aluminium centred wheel with ball bearing and total lock brake. Wheel diameter 200mm, tread width 50mm, overall height 238mm, top plate 135mm x 110mm, hole centres 105mm x 80/75mm. Load capacity 500kg. REACH compliant also PAH-Free rubber to confirm to EU-directive 2005/69/EC



	NAME	DATE
DRAWN	Matt	14/03/18
APPROVED BY	Tim W	14/03/18
SCALE	1:4	14/03/18
WEIGHT	3.527kg	14/03/18

**BIL** BIL Group Ltd, Porte Marsh Road, Calne  
 Wiltshire, SN11 9BW, United Kingdom  
 Tel +44 (0)1249 822 222 Fax: +44 (0)1249 822 300  
 www.bilgroup.co.uk

TITLE	BZPH200ERBJSWB	
-------	----------------	--

UNLESS OTHERWISE SPECIFIED DIMENSIONS ARE IN MILLIMETRES  Unspecified Tolerances Machining ± 0.25mm Fabrication ± 1mm	SIZE	DWG NO.	REV
	A4	BILCW03BZPH200ERBJSWB_01	1
FILE NAME		BILCW03BZPH200ERBJSWB_01.PDF SHEET 1 OF 1	