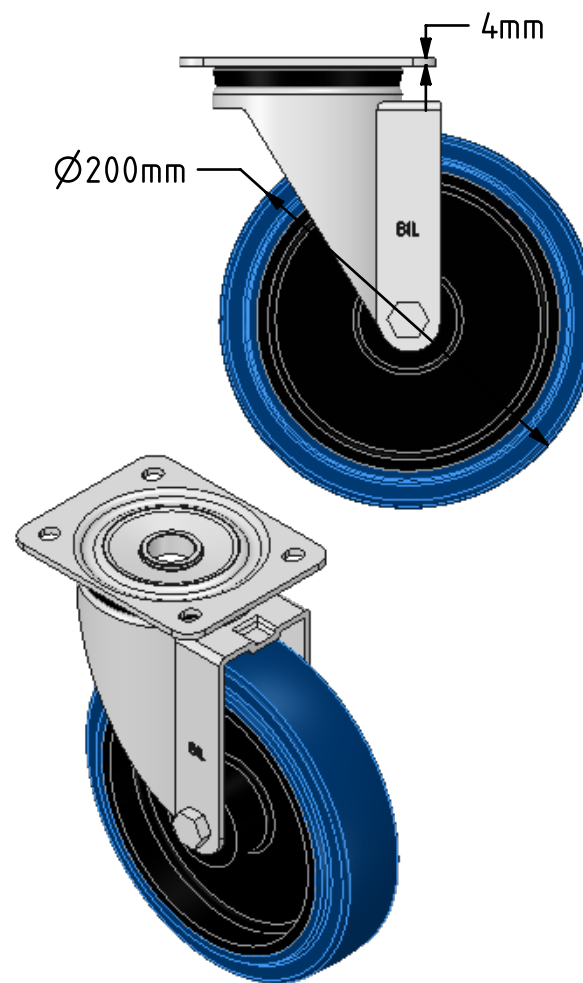
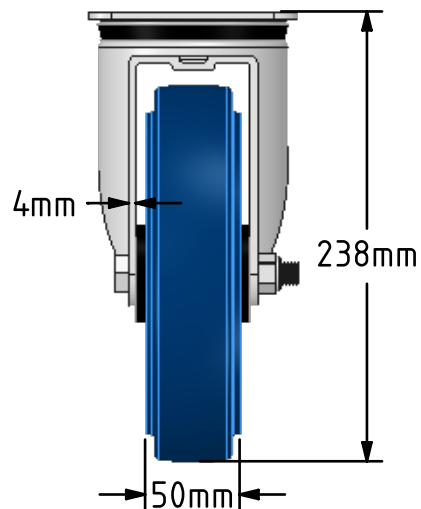
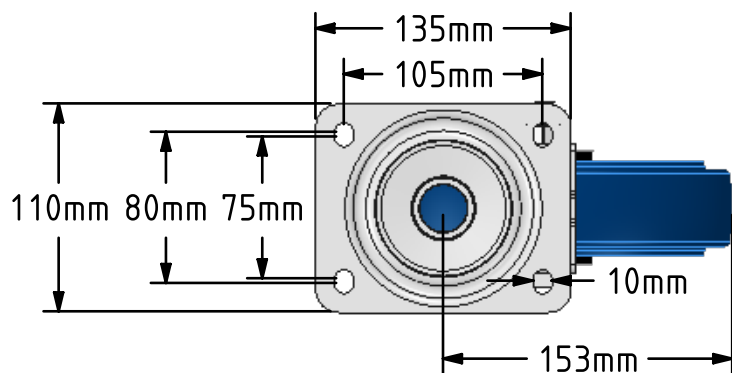
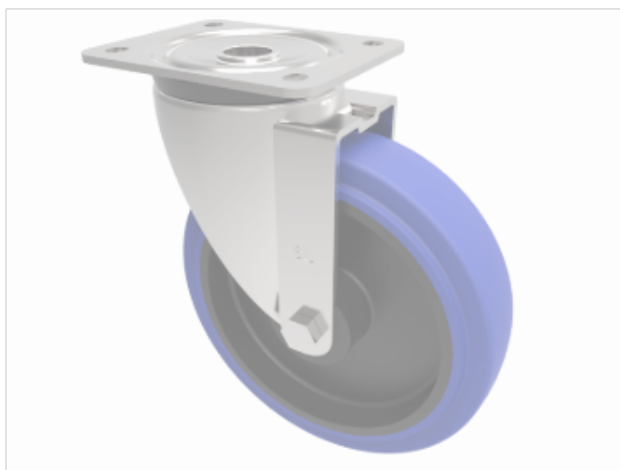


DRAWING DISCLAIMER
 COPYRIGHT OF THIS DRAWING IS RESERVED BY BIL GROUP LTD. IT IS ISSUED ON CONDITION THAT IT IS NOT REPRODUCED, COPIED, OR DISCLOSED TO A THIRD PARTY EITHER WHOLLY OR IN PART WITHOUT THE CONSENT IN WRITING OF BIL GROUP LTD.



Description:
 BZPH200RNB

Pressed steel swivel castor with a top plate fixing fitted with a blue 75 shore A elastic rubber tyre on black nylon centred wheel with a roller bearing. Wheel diameter 200mm, tread width 50mm, overall height 238mm, plate size 135mm x 110mm, hole centres 105mm x 80/75mm. Load capacity 400kg.



| | NAME | DATE |
|-------------|---------|----------|
| DRAWN | Matt | 17/07/18 |
| APPROVED BY | Tim W | 17/07/18 |
| SCALE | 1:4 | 17/07/18 |
| WEIGHT | 2.776kg | 17/07/18 |

 BIL Group Ltd, Porte Marsh Road, Calne
 Wiltshire, SN11 9BW, United Kingdom
 Tel +44 (0)1249 822 222 Fax: +44 (0)1249 822 300
 www.bilgroup.co.uk

| | |
|------------|--|
| TITLE | |
| BZPH200RNB | |

| | | | | |
|---|--|--------------------------|----------------------|--------------|
| UNLESS OTHERWISE SPECIFIED DIMENSIONS ARE IN MILLIMETRES | | SIZE | DWG NO. | REV |
| Unspecified Tolerances Machining ± 0.25mm Fabrication ± 1mm | | A4 | BILCW03BZPH200RNB_01 | 1 |
| FILE NAME | | BILCW03BZPH200RNB_01.PDF | | SHEET 1 OF 1 |