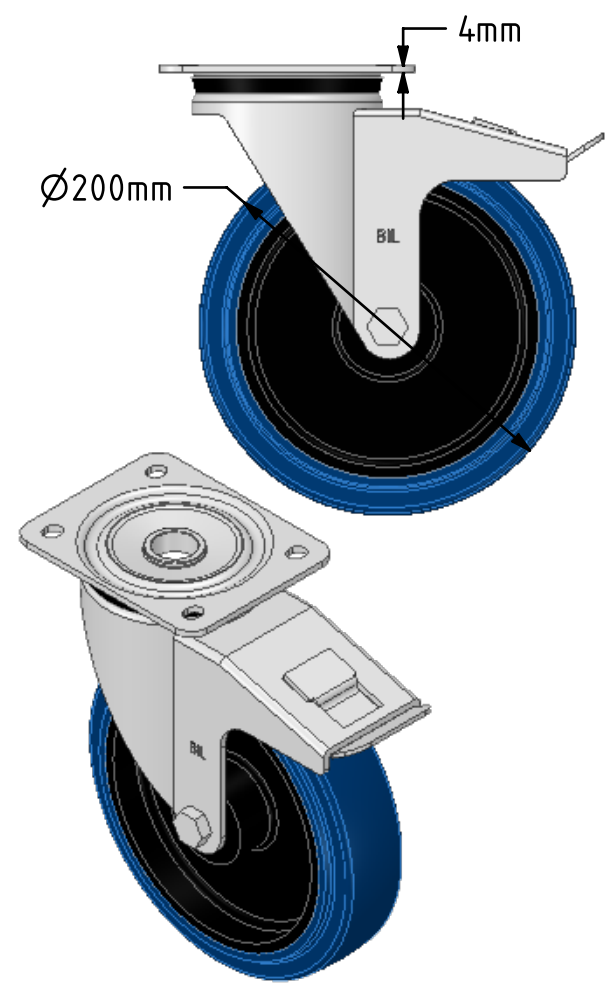
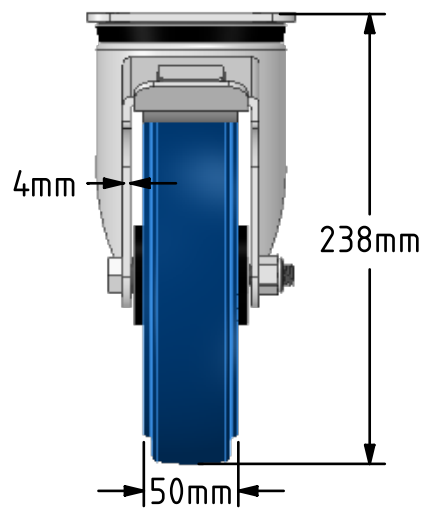
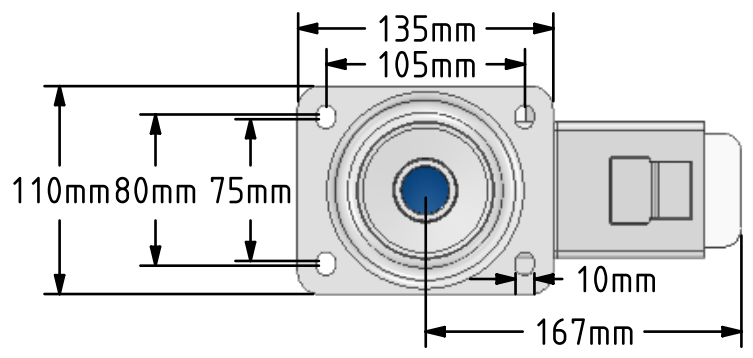
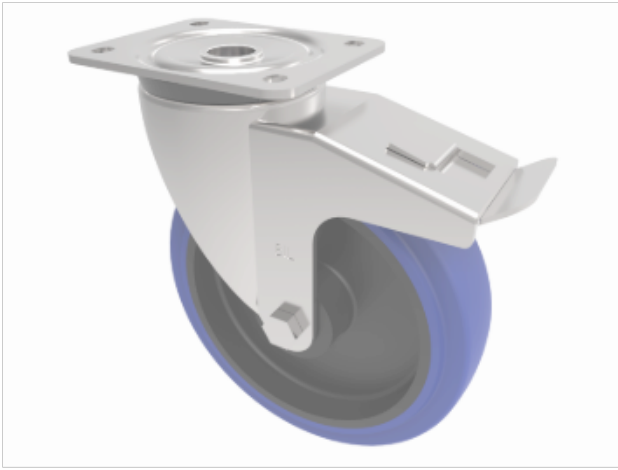


**DRAWING DISCLAIMER**  
 COPYRIGHT OF THIS DRAWING IS RESERVED BY BIL GROUP LTD. IT IS ISSUED ON CONDITION THAT IT IS NOT REPRODUCED, COPIED, OR DISCLOSED TO A THIRD PARTY EITHER WHOLLY OR IN PART WITHOUT THE CONSENT IN WRITING OF BIL GROUP LTD.



**Description:**  
 BZPH200RNSWB

Pressed steel swivel castor with a top plate fixing fitted with a blue 75 shore A elastic rubber tyre on a black nylon centre and total lock brake, Wheel diameter 200mm, tread width 50mm, overall height 238mm, top plate 135mm x 110mm, hole centres 105mm x 80/75mm. Load capacity 400kg.



|             | NAME    | DATE     |
|-------------|---------|----------|
| DRAWN       | Matt    | 17/07/18 |
| APPROVED BY | Tim W   | 17/07/18 |
| SCALE       | 1:4     | 17/07/18 |
| WEIGHT      | 3.152kg | 17/07/18 |



BIL Group Ltd, Porte Marsh Road, Calne  
 Wiltshire, SN11 9BW, United Kingdom  
 Tel +44 (0)1249 822 222 Fax: +44 (0)1249 822 300  
 www.bilgroup.co.uk

|              |  |
|--------------|--|
| TITLE        |  |
| BZPH200RNSWB |  |

UNLESS OTHERWISE SPECIFIED DIMENSIONS ARE IN MILLIMETRES  
 Unspecified Tolerances  
 Machining ± 0.25mm  
 Fabrication ± 1mm

|                                      |                        |              |
|--------------------------------------|------------------------|--------------|
| SIZE                                 | DWG NO.                | REV          |
| A4                                   | BILCW03BZPH200RNSWB_01 | 1            |
| FILE NAME BILCW03BZPH200RNSWB_01.PDF |                        | SHEET 1 OF 1 |