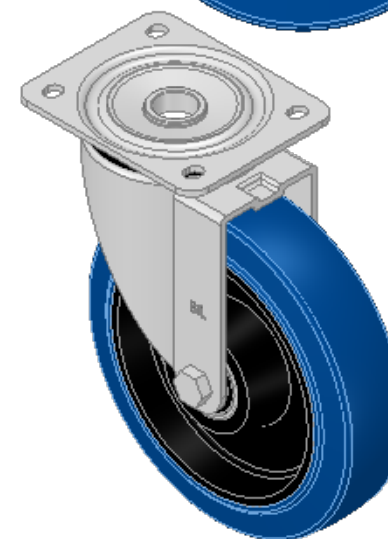
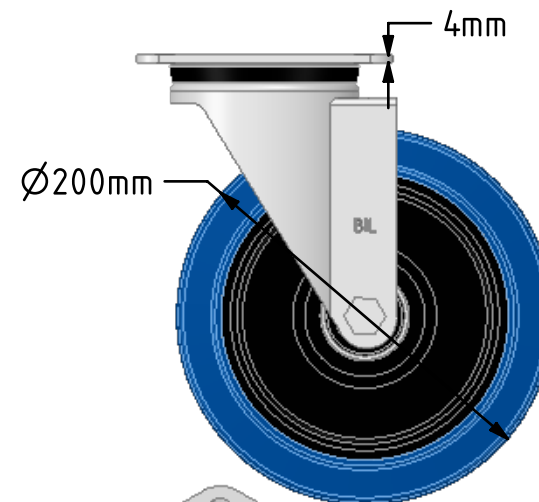
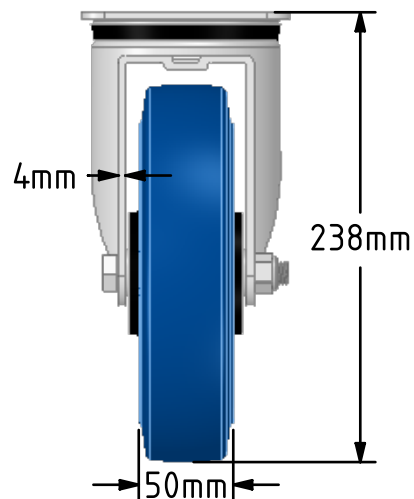
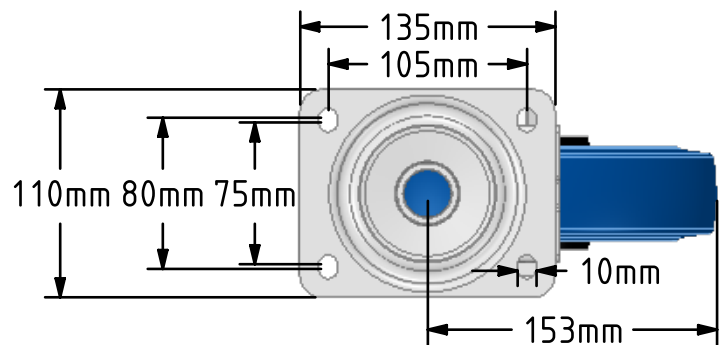
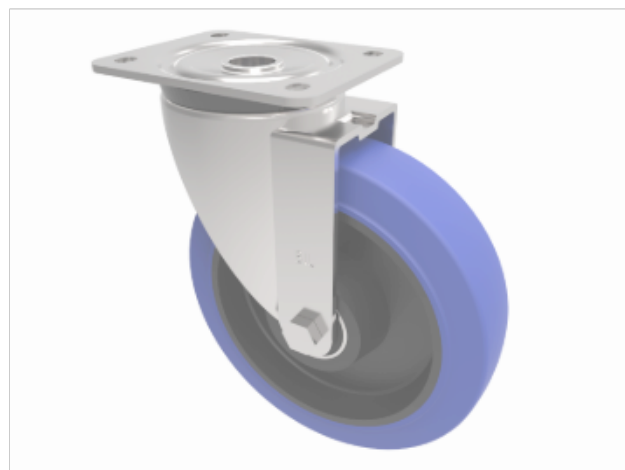


DRAWING DISCLAIMER  
 COPYRIGHT OF THIS DRAWING IS RESERVED BY BIL GROUP LTD. IT IS ISSUED ON CONDITION THAT IT IS NOT REPRODUCED, COPIED, OR DISCLOSED TO A THIRD PARTY EITHER WHOLLY OR IN PART WITHOUT THE CONSENT IN WRITING OF BIL GROUP LTD.



Description:  
 BZPH200SRNBJ

Pressed steel swivel castor with a top plate fixing fitted with a blue 65 shore A elastic rubber tyre on black nylon centred wheel with ball bearings. Wheel diameter 200mm, tread width 50mm, overall height 238mm, plate size 135mm x 110mm, hole centres 105mm x 80/75mm. Load capacity 500kg.REACH compliant also PAH-Free rubber to confirm to EU-directive 2005/69/EC



|             | NAME    | DATE     |
|-------------|---------|----------|
| DRAWN       | Matt    | 12/11/18 |
| APPROVED BY | Chris   | 12/11/18 |
| SCALE       | 1:4     | 12/11/18 |
| WEIGHT      | 2.935kg | 12/11/18 |

UNLESS OTHERWISE SPECIFIED DIMENSIONS ARE IN MILLIMETRES

Unspecified Tolerances  
 Machining ± 0.25mm  
 Fabrication ± 1mm



BIL Group Ltd, Porte Marsh Road, Calne  
 Wiltshire, SN11 9BW, United Kingdom  
 Tel +44 (0)1249 822 222 Fax: +44 (0)1249 822 300  
 www.bilgroup.co.uk

TITLE

BZPH200SRNBJ

SIZE DWG NO.  
 A4

BILCW03BZPH200SRNBJ\_01

REV  
 1

FILE NAME BILCW03BZPH200SRNBJ\_01.PDF

SHEET 1 OF 1