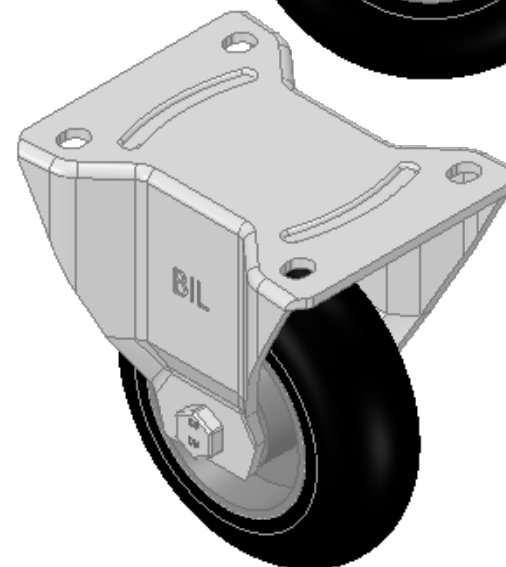
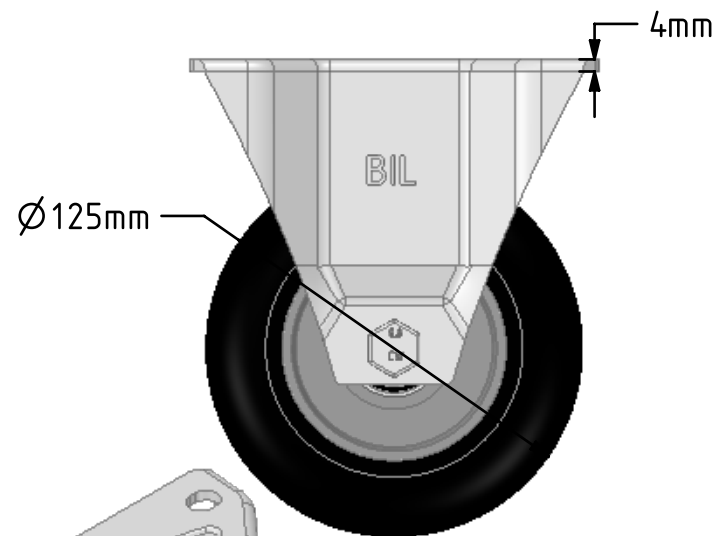
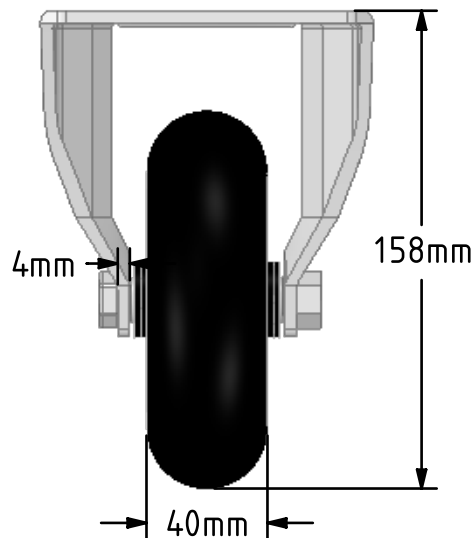
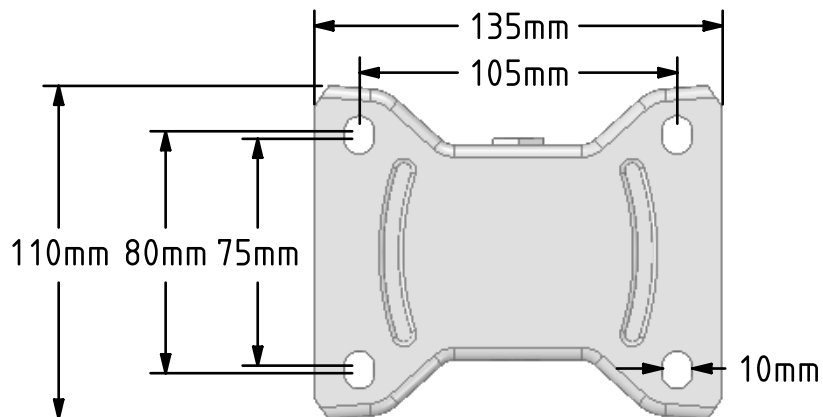


DRAWING DISCLAIMER
 COPYRIGHT OF THIS DRAWING IS RESERVED BY BIL GROUP LTD. IT IS ISSUED ON CONDITION THAT IT IS NOT REPRODUCED, COPIED, OR DISCLOSED TO A THIRD PARTY EITHER WHOLLY OR IN PART WITHOUT THE CONSENT IN WRITING OF BIL GROUP LTD.



Description:
 BZPHF125SRERBJ

Pressed steel fixed castor with a top plate fixing with a black ergonomic black high elastic natural 55 shore A round profile rubber tyre wheel with an aluminium centre with a ball bearing. Wheel diameter 125mm, tread width 40mm, overall height 158mm, top plate 135mm x 110mm, hole centres 105mm x 80/75mm. Load capacity 200kg. REACH compliant also PAH-Free rubber to confirm to EU-directive 2005/69/EC, also available with flat tread details on request



	NAME	DATE
DRAWN	Matt	14/11/18
APPROVED BY	Tim W	14/11/18
SCALE	2:5	14/11/18
WEIGHT	1.292kg	14/11/18



BIL Group Ltd, Porte Marsh Road, Calne
 Wiltshire, SN11 9BW, United Kingdom
 Tel +44 (0)1249 822 222 Fax: +44 (0)1249 822 300
 www.bilgroup.co.uk

TITLE		
BZPHF125SRERBJ		
SIZE	DWG NO.	REV
A4	BILCW03BZPHF125SRERBJ_01	1
FILE NAME	BILCW03BZPHF125SRERBJ_01.PDF SHEET 1 OF 1	

UNLESS OTHERWISE SPECIFIED DIMENSIONS ARE IN MILLIMETRES

Unspecified Tolerances
 Machining ± 0.25mm
 Fabrication ± 1mm