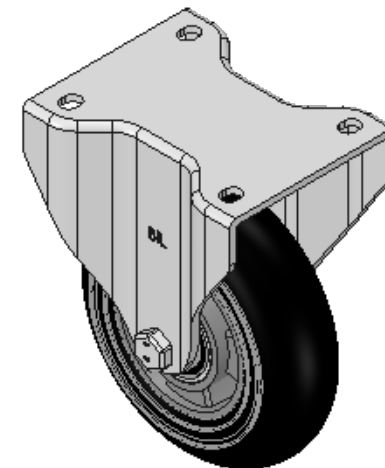
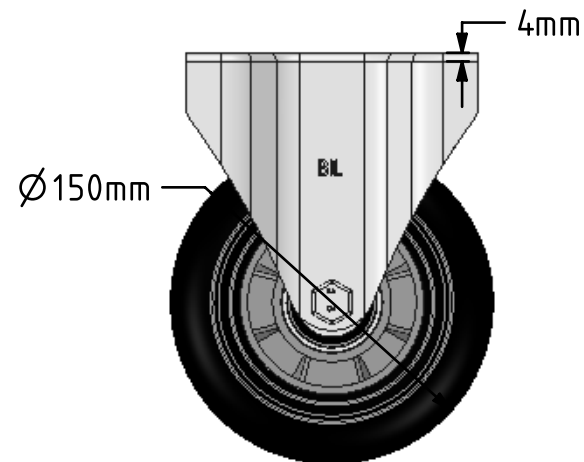
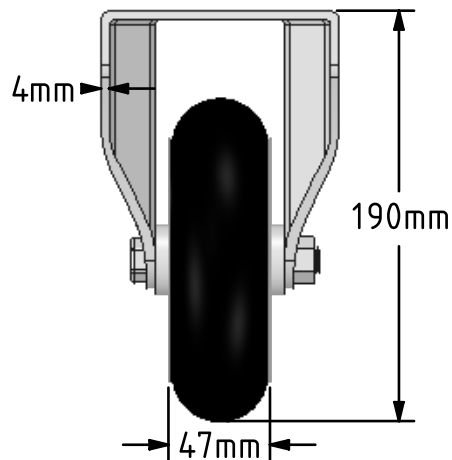
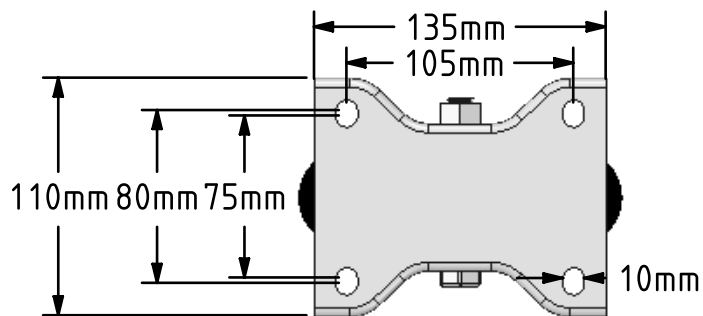


DRAWING DISCLAIMER

COPYRIGHT OF THIS DRAWING IS RESERVED BY BIL GROUP LTD. IT IS ISSUED ON CONDITION THAT IT IS NOT REPRODUCED, COPIED, OR DISCLOSED TO A THIRD PARTY EITHER WHOLLY OR IN PART WITHOUT THE CONSENT IN WRITING OF BIL GROUP LTD.



Description:

BZPHF150SRERBJ

Pressed steel fixed castor with a flat plate fixing fitted with a black ergonomic high elastic natural 55 shore A round profile rubber tyre on aluminium centred wheel with ball bearings. Wheel diameter 150mm, tread width 50mm, overall height 190mm, plate size 135mm x 110mm, hole centres 105mm x 80/75mm. Load capacity 300kg. REACH compliant also PAH-Free rubber to confirm to EU-directive 2005/69/EC, also available with flat tread details on request



| | NAME | DATE |
|-------------|---------|----------|
| DRAWN | Matt | 12/02/18 |
| APPROVED BY | Chris | 12/02/18 |
| SCALE | 2:7 | 12/02/18 |
| WEIGHT | 2.104kg | 12/02/18 |

UNLESS OTHERWISE SPECIFIED DIMENSIONS ARE IN MILLIMETRES
 Unspecified Tolerances
 Machining ± 0.25mm
 Fabrication ± 1mm



BIL Group Ltd, Porte Marsh Road, Calne
 Wiltshire, SN11 9BW, United Kingdom
 Tel +44 (0)1249 822 222 Fax: +44 (0)1249 822 300
 www.bilgroup.co.uk

TITLE

BZPHF150SRERBJ

| SIZE | DWG NO. | REV |
|------|--------------------------|-----|
| A4 | BILCW03BZPHF150SRERBJ_01 | 1 |

FILE NAME BILCW03BZPHF150SRERBJ_01.PDF SHEET 1 OF 1