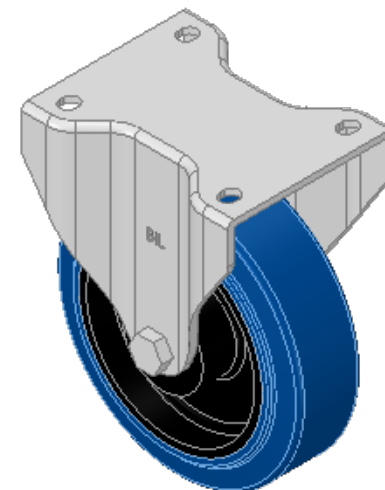
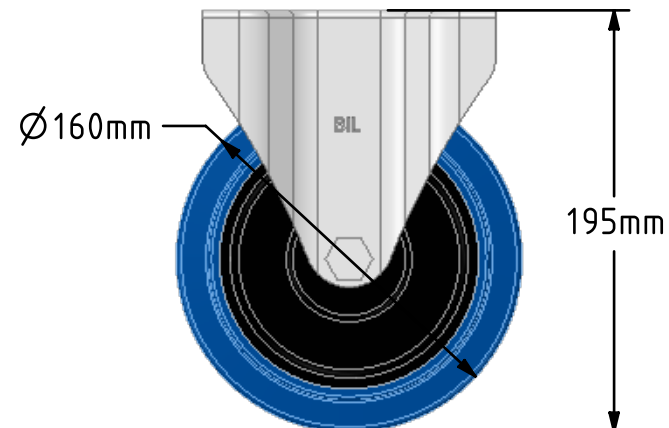
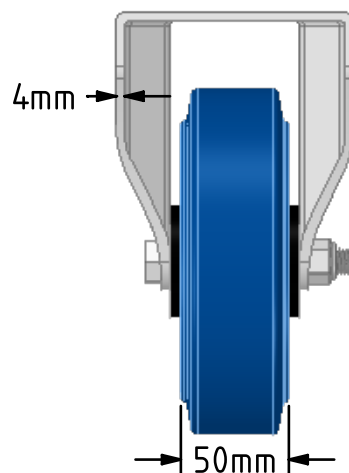
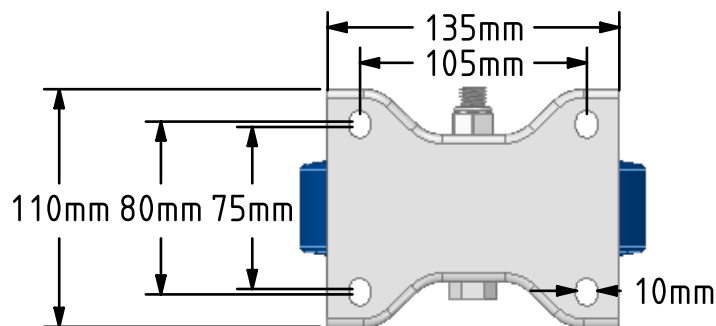
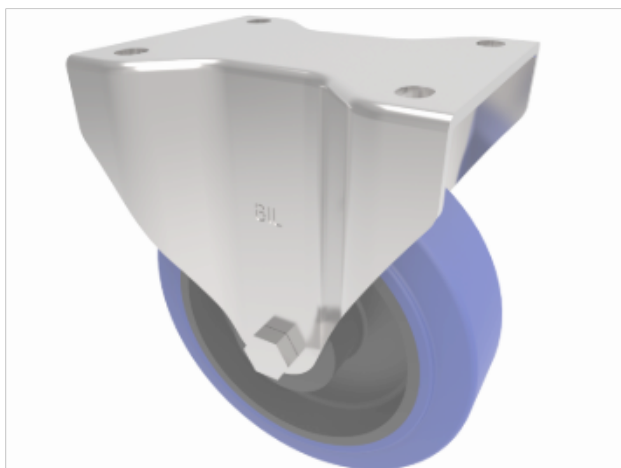


DRAWING DISCLAIMER
 COPYRIGHT OF THIS DRAWING IS RESERVED BY BIL GROUP LTD. IT IS ISSUED ON CONDITION THAT IT IS NOT REPRODUCED, COPIED, OR DISCLOSED TO A THIRD PARTY EITHER WHOLLY OR IN PART WITHOUT THE CONSENT IN WRITING OF BIL GROUP LTD.



Description:
 BZPHF160RNB

Pressed steel fixed castor with a flat plate fixing fitted with a blue 75 shore A elastic rubber tyre on black nylon centred wheel with a roller bearing. Wheel diameter 160mm, tread width 50mm, overall height 195mm, plate size 135mm x 110mm, hole centres 105mm x 80mm/75mm. Load capacity 300kg.



	NAME	DATE
DRAWN	Matt	08/11/18
APPROVED BY	Tim W	08/11/18
SCALE	2:7	08/11/18
WEIGHT	1.924kg	08/11/18

UNLESS OTHERWISE SPECIFIED DIMENSIONS ARE IN MILLIMETRES

Unspecified Tolerances
 Machining ± 0.25mm
 Fabrication ± 1mm



BIL Group Ltd, Porte Marsh Road, Calne
 Wiltshire, SN11 9BW, United Kingdom
 Tel +44 (0)1249 822 222 Fax: +44 (0)1249 822 300
 www.bilgroup.co.uk

TITLE

BZPHF160RNB

SIZE DWG NO.

A4

BILCW03BZPHF160RNB_01

REV

1

FILE NAME BILCW03BZPHF160RNB_01.PDF

SHEET 1 OF 1