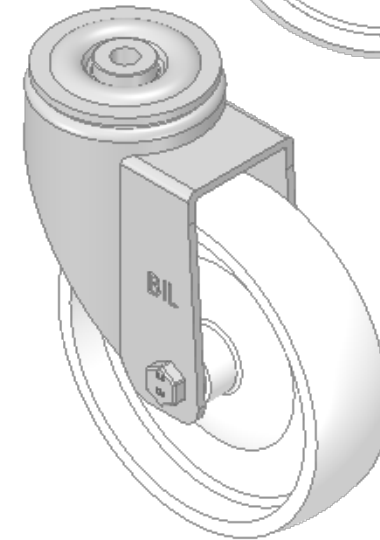
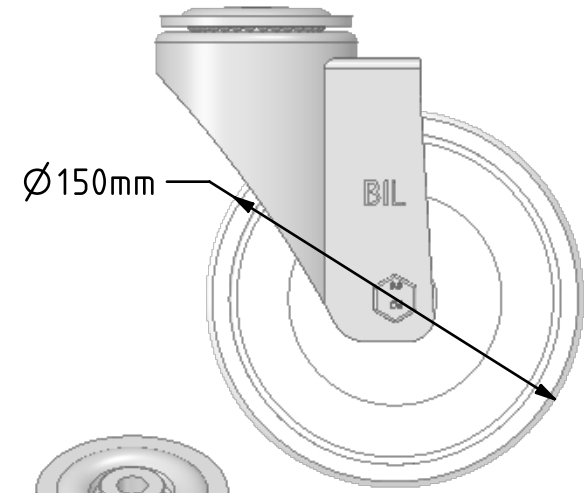
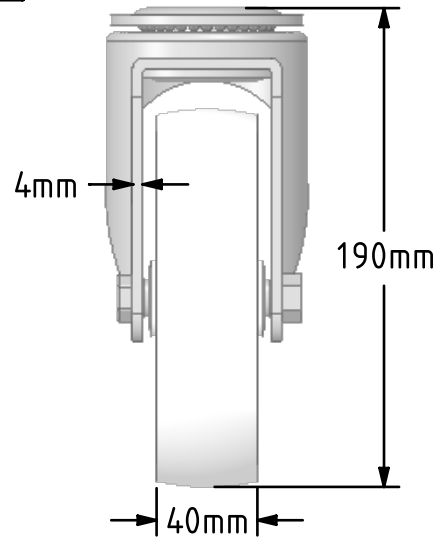
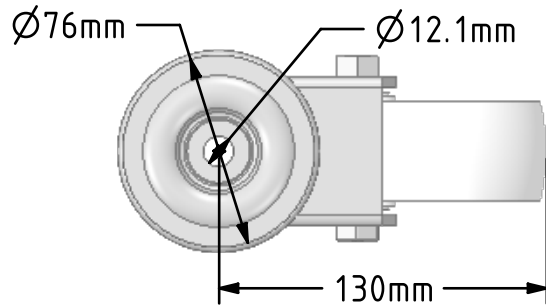


DRAWING DISCLAIMER  
 COPYRIGHT OF THIS DRAWING IS RESERVED BY BIL GROUP LTD. IT IS ISSUED ON CONDITION THAT IT IS NOT REPRODUCED, COPIED, OR DISCLOSED TO A THIRD PARTY EITHER WHOLLY OR IN PART WITHOUT THE CONSENT IN WRITING OF BIL GROUP LTD.



Description:  
 BZPHL150NYBH12

Pressed steel swivel castor with a bolt hole fixing fitted with white nylon wheel with a plain bore. Wheel diameter 150mm, tread width 40mm, overall height 190mm, bolt hole 12mm. Load capacity 300Kg.



	NAME	DATE
DRAWN	Matt	24/10/18
APPROVED BY	Tim W	24/10/18
SCALE	1:3	24/10/18
WEIGHT	1.283kg	24/10/18

 BIL Group Ltd, Porte Marsh Road, Calne Wiltshire, SN11 9BW, United Kingdom  
 Tel +44 (0)1249 822 222 Fax: +44 (0)1249 822 300  
 www.bilgroup.co.uk

TITLE  
**BZPHL150NYBH12**

UNLESS OTHERWISE SPECIFIED DIMENSIONS ARE IN MILLIMETRES  
 Unspecified Tolerances  
 Machining ± 0.25mm  
 Fabrication ± 1mm

SIZE	DWG NO.	REV
A4	BILCW03BZPHL150NYBH12__01	1
FILE NAME BILCW03BZPHL150NYBH12__01.PDF		SHEET 1 OF 1