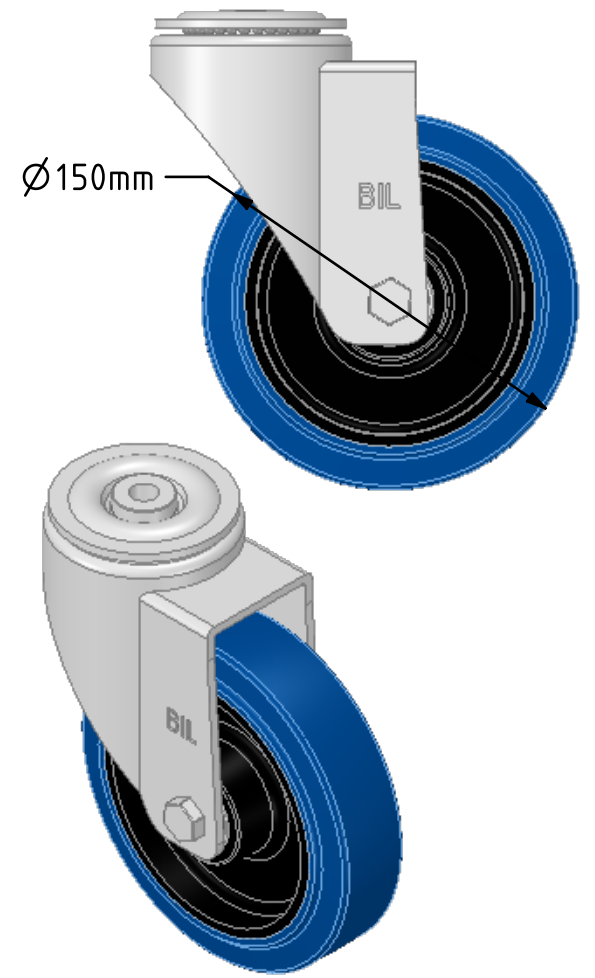
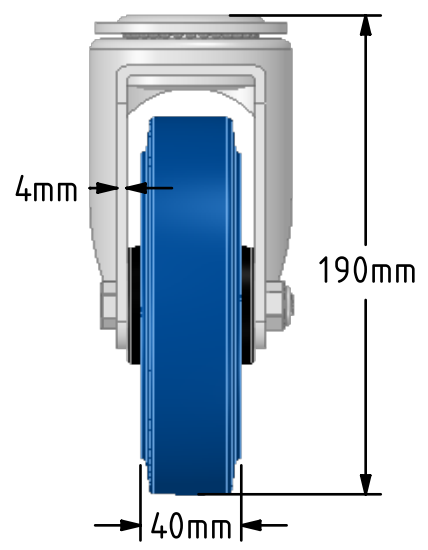
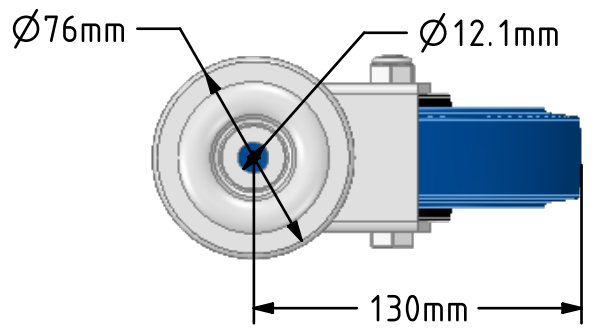
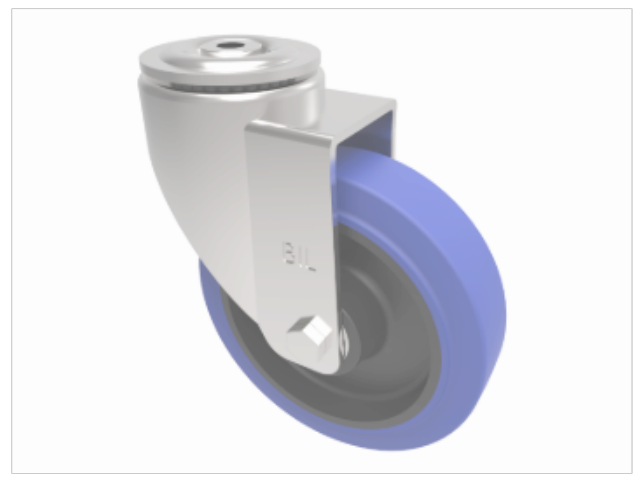


DRAWING DISCLAIMER
 COPYRIGHT OF THIS DRAWING IS RESERVED BY BIL GROUP LTD. IT IS ISSUED ON CONDITION THAT IT IS NOT REPRODUCED, COPIED, OR DISCLOSED TO A THIRD PARTY EITHER WHOLLY OR IN PART WITHOUT THE CONSENT IN WRITING OF BIL GROUP LTD.



Description:
 BZPHL150SRNBJBH12
 Pressed steel swivel castor with a 12mm bolt hole fitted with 65 shore A blue elastic rubber tyre black nylon centred wheel with ball bearings. Wheel diameter 150mm, tread width 40mm, overall height 190mm, Load capacity 300Kg. REACH compliant also PAH-Free rubber to confirm to EU-directive 2005/69/EC



	NAME	DATE
DRAWN	Matt	25/10/18
APPROVED BY	Tim W	25/10/18
SCALE	1:3	25/10/18
WEIGHT	1.611kg	25/10/18

 BIL Group Ltd, Porte Marsh Road, Calne Wiltshire, SN11 9BW, United Kingdom
 Tel +44 (0)1249 822 222 Fax: +44 (0)1249 822 300
 www.bilgroup.co.uk

TITLE
BZPHL150SRNBJBH12

UNLESS OTHERWISE SPECIFIED DIMENSIONS ARE IN MILLIMETRES
 Unspecified Tolerances
 Machining ± 0.25mm
 Fabrication ± 1mm

SIZE	DWG NO.	REV
A4	BILCW03BZPHL150SRNBJBH12__01	1

FILE NAME BILCW03BZPHL150SRNBJBH12__01.PDF SHEET 1 OF 1