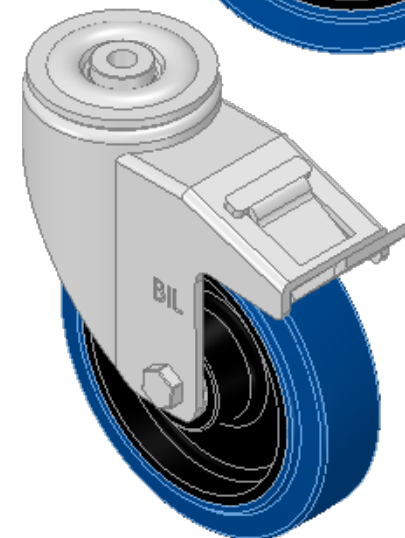
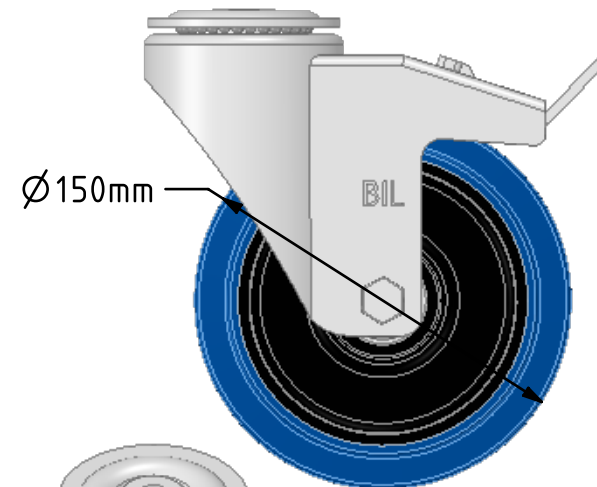
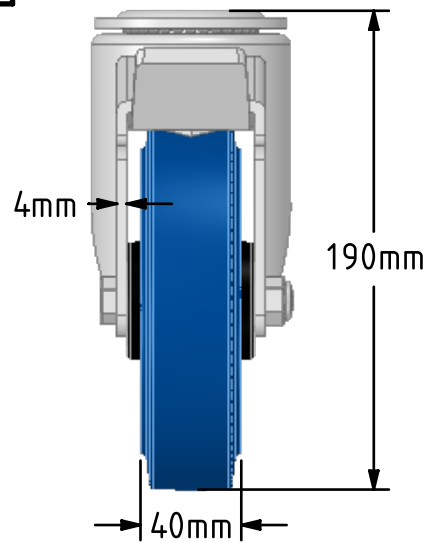
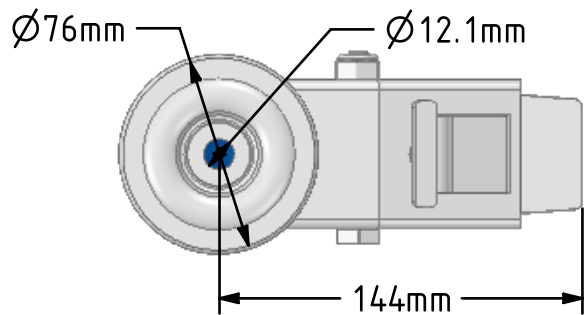


**DRAWING DISCLAIMER**  
 COPYRIGHT OF THIS DRAWING IS RESERVED BY BIL GROUP LTD. IT IS ISSUED ON CONDITION THAT IT IS NOT REPRODUCED, COPIED, OR DISCLOSED TO A THIRD PARTY EITHER WHOLLY OR IN PART WITHOUT THE CONSENT IN WRITING OF BIL GROUP LTD.



**Description:**  
 BZPHL150SRNBJBH12SWB

Pressed steel swivel castor with a 12mm bolt hole fitted with 65 shore A blue elastic rubber tyre black nylon centred wheel with ball bearings and a total lock brake. Wheel diameter 150mm, tread width 40mm, overall height 190mm, Load capacity 300Kg. REACH compliant also PAH-Free rubber to confirm to EU-directive 2005/69/EC



	NAME	DATE
DRAWN	Matt	25/10/18
APPROVED BY	Tim W	25/10/18
SCALE	1:3	25/10/18
WEIGHT	1.939kg	25/10/18

 BIL Group Ltd, Porte Marsh Road, Calne Wiltshire, SN11 9BW, United Kingdom  
 Tel +44 (0)1249 822 222 Fax: +44 (0)1249 822 300  
 www.bilgroup.co.uk

UNLESS OTHERWISE SPECIFIED DIMENSIONS ARE IN MILLIMETRES  
 Unspecified Tolerances  
 Machining ± 0.25mm  
 Fabrication ± 1mm

TITLE		REV
BZPHL150SRNBJBH12SWB		1
SIZE	DWG NO.	FILE NAME
A4	BILCW03BZPHL150SRNBJBH12SWB_01	BILCW03BZPHL150SRNBJBH12SWB_01.PDF
		SHEET 1 OF 1