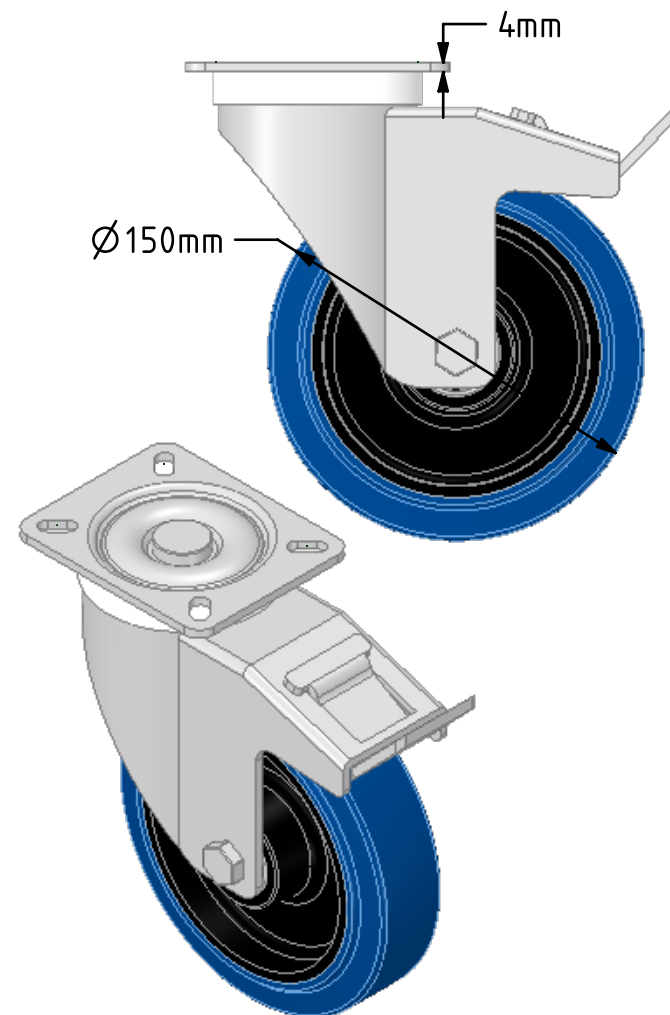
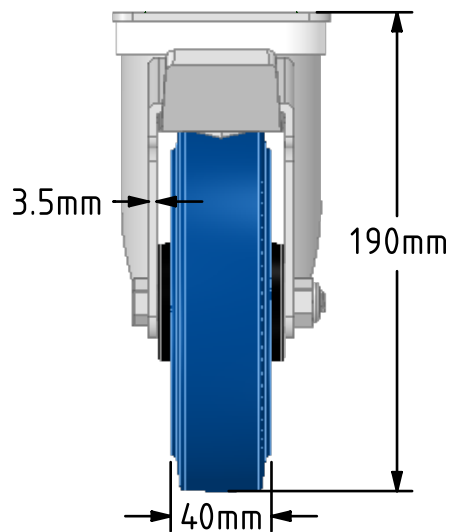
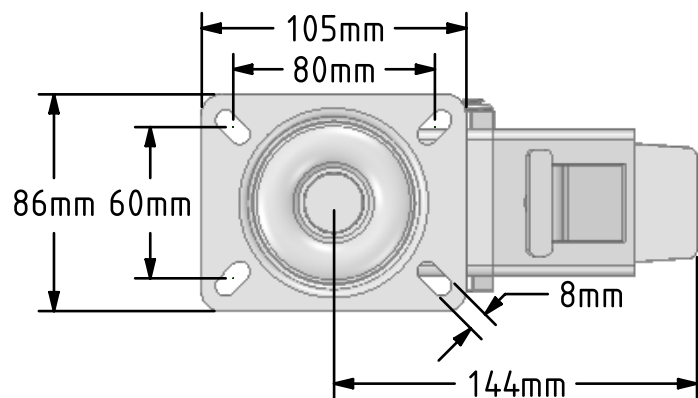
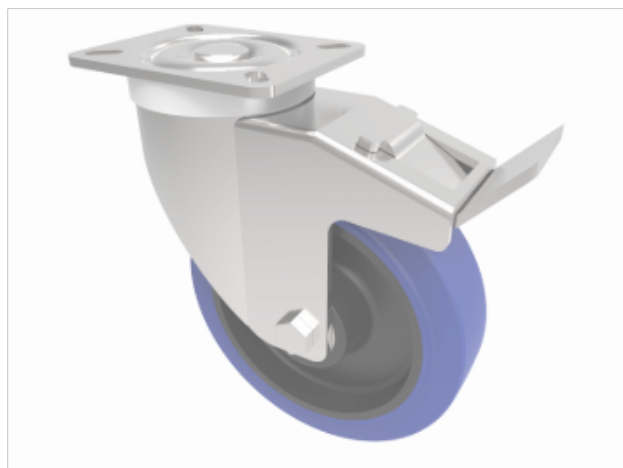


DRAWING DISCLAIMER
 COPYRIGHT OF THIS DRAWING IS RESERVED BY BIL GROUP LTD. IT IS ISSUED ON CONDITION THAT IT IS NOT REPRODUCED, COPIED, OR DISCLOSED TO A THIRD PARTY EITHER WHOLLY OR IN PART WITHOUT THE CONSENT IN WRITING OF BIL GROUP LTD.



Description:
 BZPHL150SRNBJSWB

Pressed steel swivel castor with a top plate fixing fitted with 65 shore A blue elastic rubber tyre black nylon centred wheel with ball bearings and a total lock brake. Wheel diameter 150mm, tread width 40mm, overall height 190mm, top plate 105mm x 86mm, hole centres 80mm x 60mm. Load capacity 300Kg. REACH compliant also PAH-Free rubber to confirm to EU-directive 2005/69/EC



| | NAME | DATE |
|-------------|--------|----------|
| DRAWN | Matt | 17/10/18 |
| APPROVED BY | Tim W | 17/10/18 |
| SCALE | 1:3 | 17/10/18 |
| WEIGHT | 2.11kg | 17/10/18 |

UNLESS OTHERWISE SPECIFIED DIMENSIONS ARE IN MILLIMETRES

Unspecified Tolerances
 Machining ± 0.25mm
 Fabrication ± 1mm



BIL Group Ltd, Porte Marsh Road, Calne
 Wiltshire, SN11 9BW, United Kingdom
 Tel +44 (0)1249 822 222 Fax: +44 (0)1249 822 300
 www.bilgroup.co.uk

TITLE

BZPHL150SRNBJSWB

| SIZE | DWG NO. | REV |
|------|----------------------------|-----|
| A4 | BILCW03BZPHL150SRNBJSWB_01 | 1 |

FILE NAME BILCW03BZPHL150SRNBJSWB_01.PDF SHEET 1 OF 1