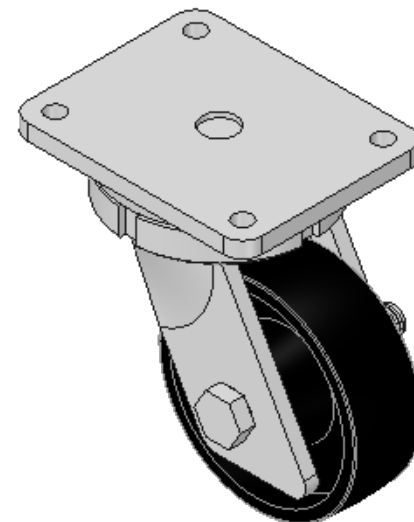
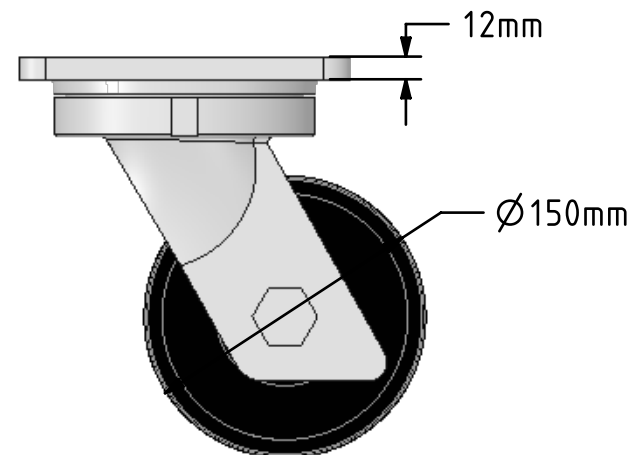
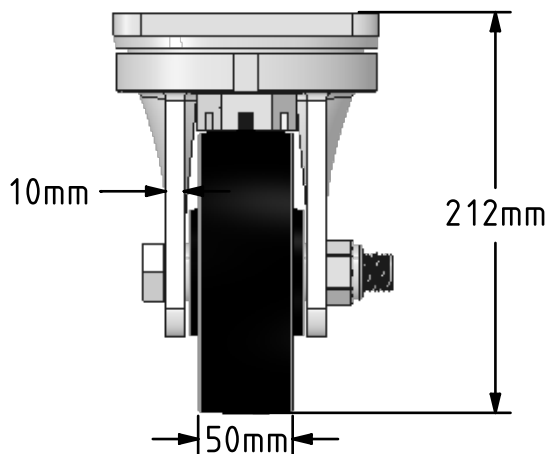
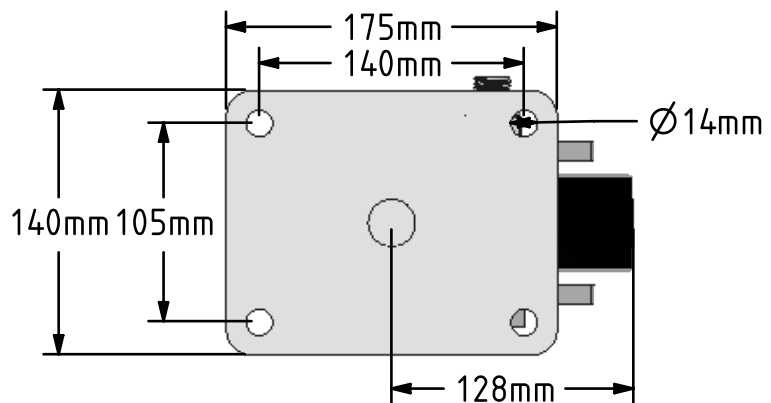



DRAWING DISCLAIMER
 COPYRIGHT OF THIS DRAWING IS RESERVED BY BIL GROUP LTD. IT IS ISSUED ON CONDITION THAT IT IS NOT REPRODUCED, COPIED, OR DISCLOSED TO A THIRD PARTY EITHER WHOLLY OR IN PART WITHOUT THE CONSENT IN WRITING OF BIL GROUP LTD.



Description:
 BZQ150CIBJ

Fabricated swivel castor with a flat plate fixing fitted with a cast iron wheel with ball bearings. Wheel diameter 150mm, tread width 50mm, overall height 212mm, plate size 175mm x 140mm, hole centres 140mm x 105mm. Load capacity 910kg.



	NAME	DATE	 BIL Group Ltd, Porte Marsh Road, Calne Wiltshire, SN11 9BW, United Kingdom Tel +44 (0)1249 822 222 Fax: +44 (0)1249 822 300 www.bilgroup.co.uk
DRAWN	Matt	29/03/17	
APPROVED BY	Tim W	29/03/17	
SCALE	1:4	29/03/17	
WEIGHT	10.314kg	29/03/17	TITLE
UNLESS OTHERWISE SPECIFIED DIMENSIONS ARE IN MILLIMETRES Unspecified Tolerances Machining ± 0.25mm Fabrication ± 1mm			BZQ150CIBJ
SIZE	DWG NO.	REV	
A4	BILCW03BZQ150CIBJ_01	1	
FILE NAME	BILCW03BZQ150CIBJ_01.PDF		SHEET 1 OF 1