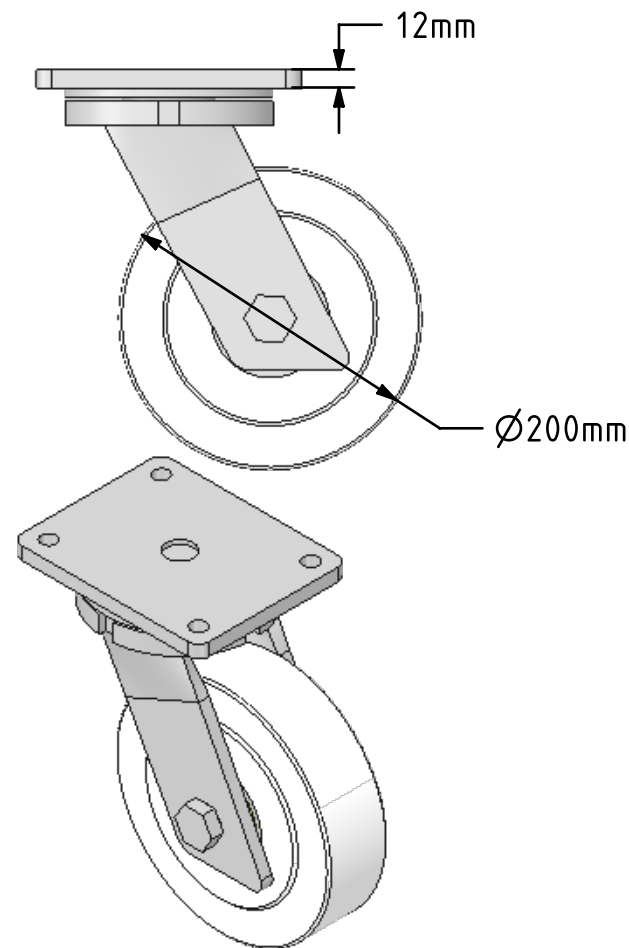
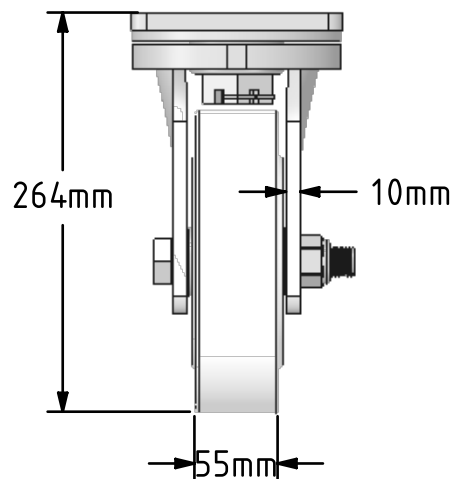
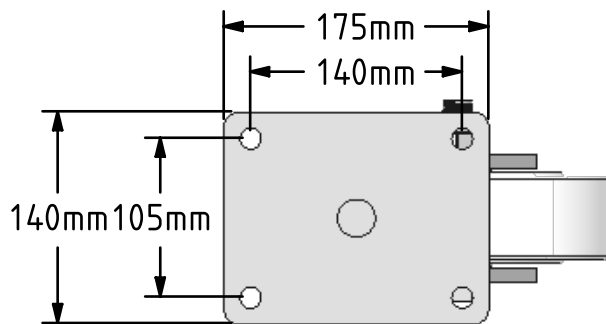
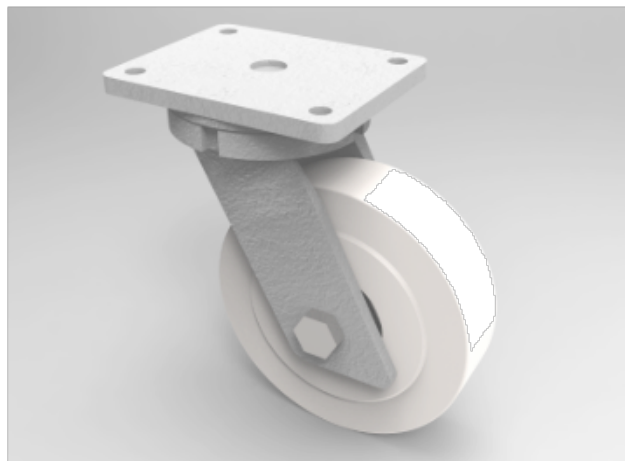



DRAWING DISCLAIMER  
 COPYRIGHT OF THIS DRAWING IS RESERVED BY BIL GROUP LTD. IT IS ISSUED ON CONDITION THAT IT IS NOT REPRODUCED, COPIED, OR DISCLOSED TO A THIRD PARTY EITHER WHOLLY OR IN PART WITHOUT THE CONSENT IN WRITING OF BIL GROUP LTD.



Description:  
 BZQ200NYBJ

Fabricated swivel castor with a top plate fixing fitted with a heavy duty white nylon wheel with ball bearings. Wheel diameter 200mm, tread width 55mm, overall height 264mm, top plate 175mm x 140mm, hole centres 140mm x 105mm. Load capacity 3000kg.



	NAME	DATE	 BIL Group Ltd, Porte Marsh Road, Calne Wiltshire, SN11 9BW, United Kingdom Tel +44 (0)1249 822 222 Fax: +44 (0)1249 822 300 www.bilgroup.eu
DRAWN	Matt	18/05/16	
APPROVED BY	Tim W	18/05/16	
SCALE	1:5	18/05/16	
WEIGHT	10.21kg	18/05/16	
UNLESS OTHERWISE SPECIFIED DIMENSIONS ARE IN MILLIMETRES  Unspecified Tolerances Machining ± 0.25mm Fabrication ± 1mm			TITLE <b>BZQ200NYBJ</b>
SIZE	DWG NO.		REV
A4	BILCW03BZQ200NYBJ_01		1
FILE NAME	BILCW03BZQ200NYBJ_01.PDF		SHEET 1 OF 1