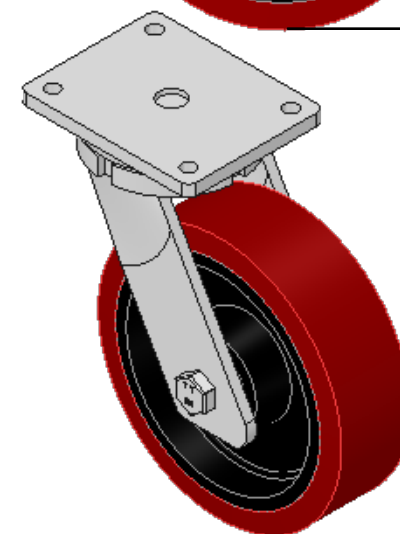
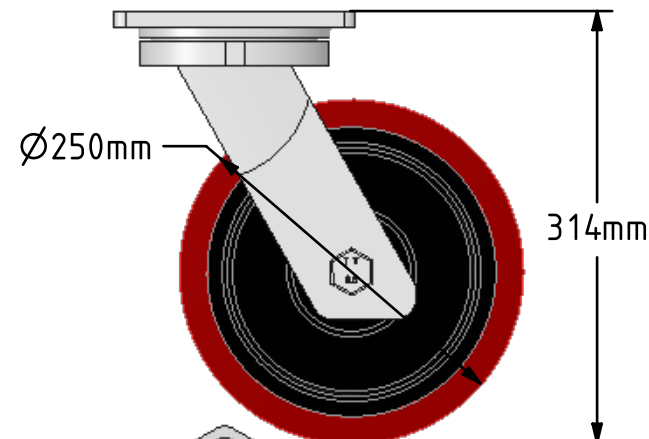
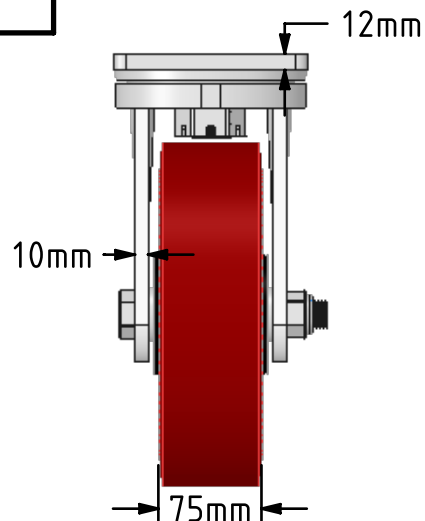
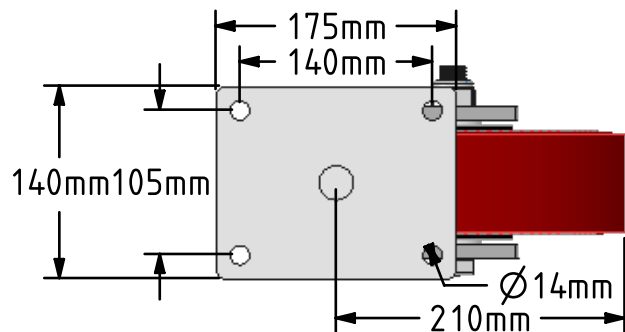


DRAWING DISCLAIMER  
 COPYRIGHT OF THIS DRAWING IS RESERVED BY BIL GROUP LTD. IT IS ISSUED ON CONDITION THAT IT IS NOT REPRODUCED, COPIED, OR DISCLOSED TO A THIRD PARTY EITHER WHOLLY OR IN PART WITHOUT THE CONSENT IN WRITING OF BIL GROUP LTD.



Description:  
 BZQ250PTBJ

Fabricated swivel castor with a flat plate fixing fitted with a brown polyurethane tyre on cast iron centred wheel with a ball bearing. Wheel diameter 250mm, tread width 75mm, overall height 314mm, plate size 175mm x 140mm, hole centres 140mm x 105mm. Load capacity 1800kg.



	NAME	DATE
DRAWN	Matt	23/02/18
APPROVED BY	Chris	23/02/18
SCALE	2:11	23/02/18
WEIGHT	17.463kg	23/02/18

UNLESS OTHERWISE SPECIFIED DIMENSIONS ARE IN MILLIMETRES

Unspecified Tolerances  
 Machining ± 0.25mm  
 Fabrication ± 1mm



BIL Group Ltd, Porte Marsh Road, Calne  
 Wiltshire, SN11 9BW, United Kingdom  
 Tel +44 (0)1249 822 222 Fax: +44 (0)1249 822 300  
 www.bilgroup.co.uk

TITLE

BZQ250PTBJ

SIZE DWG NO.

A4

BILCW03BZQ250PTBJ\_01

REV

1

FILE NAME

BILCW03BZQ250PTBJ\_01.PDF

SHEET 1 OF 1