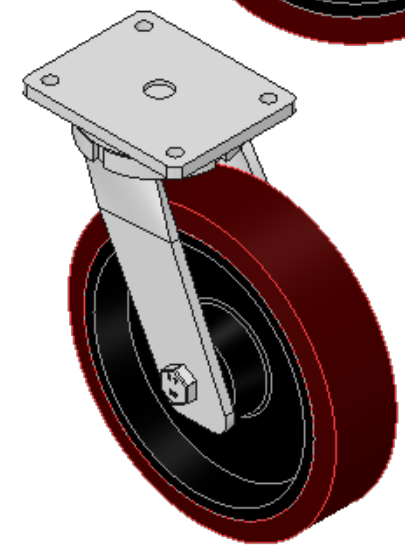
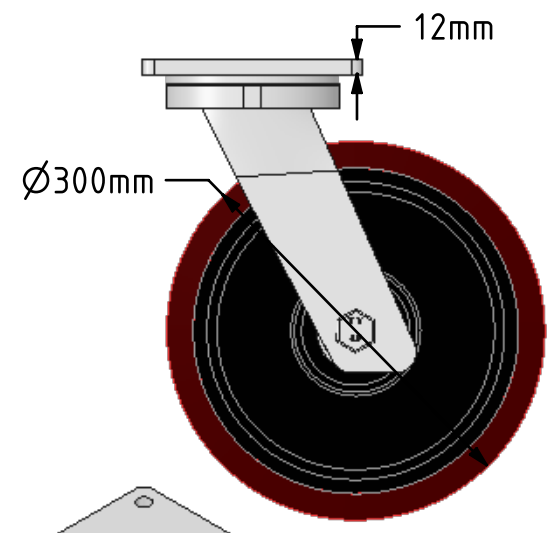
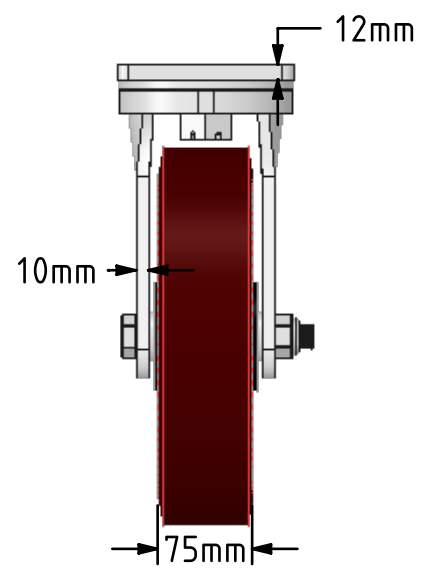
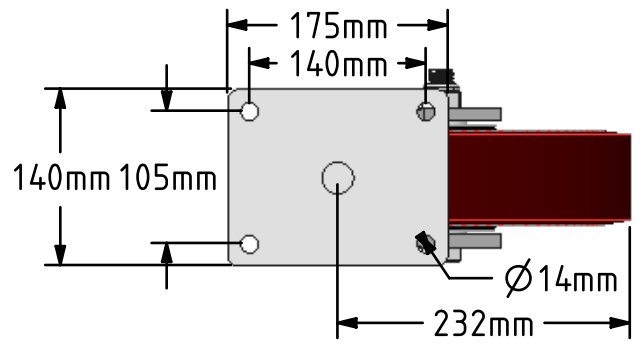



**DRAWING DISCLAIMER**  
 COPYRIGHT OF THIS DRAWING IS RESERVED BY BIL GROUP LTD. IT IS ISSUED ON CONDITION THAT IT IS NOT REPRODUCED, COPIED, OR DISCLOSED TO A THIRD PARTY EITHER WHOLLY OR IN PART WITHOUT THE CONSENT IN WRITING OF BIL GROUP LTD.



**Description:**  
 BZQ300PTBJ  
 Fabricated swivel castor with a flat plate fixing fitted with a brown polyurethane tyred on cast iron centred wheel with ball bearing. Wheel diameter 300mm, tread width 75mm, overall height 365mm, plate size 175mm x 140mm, hole centres 140mm x 105mm. Load capacity 2200kg.



	NAME	DATE	 BIL Group Ltd, Porte Marsh Road, Calne Wiltshire, SN11 9BW, United Kingdom Tel +44 (0)1249 822 222 Fax: +44 (0)1249 822 300 www.bilgroup.co.uk
DRAWN	Matt	23/02/18	
APPROVED BY	Chris	23/02/18	
SCALE	1:6	23/02/18	
WEIGHT	20.357kg	23/02/18	
UNLESS OTHERWISE SPECIFIED DIMENSIONS ARE IN MILLIMETRES Unspecified Tolerances Machining ± 0.25mm Fabrication ± 1mm			TITLE <p style="text-align: center;"><b>BZQ300PTBJ</b></p>
SIZE	DWG NO.	REV	
A4	BILCW03BZQ300PTBJ__02	2	
FILE NAME	BILCW03BZQ300PTBJ__02.PDF		SHEET 1 OF 1