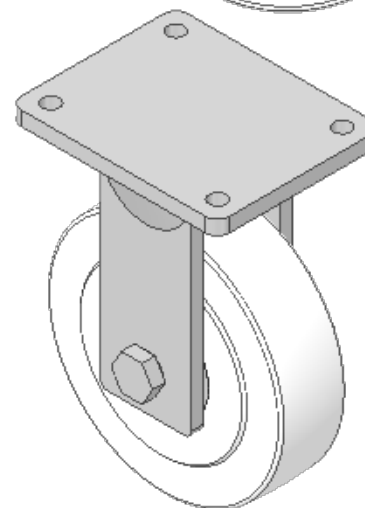
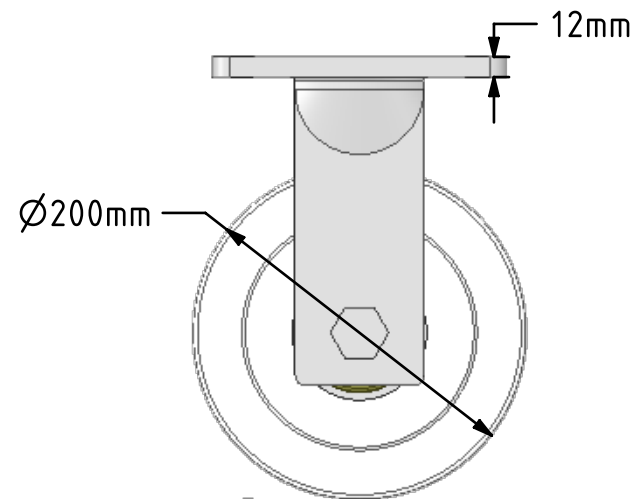
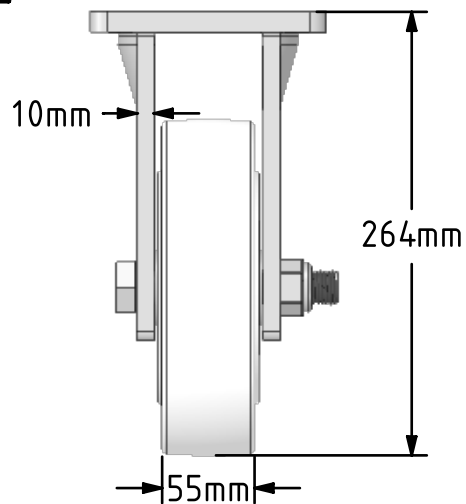
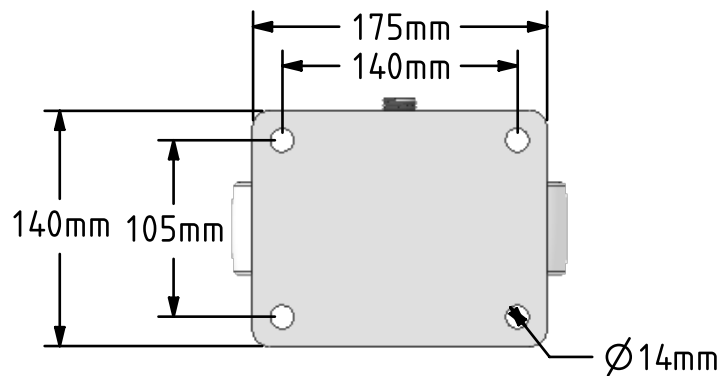


DRAWING DISCLAIMER
 COPYRIGHT OF THIS DRAWING IS RESERVED BY BIL GROUP LTD. IT IS ISSUED ON CONDITION THAT IT IS NOT REPRODUCED, COPIED, OR DISCLOSED TO A THIRD PARTY EITHER WHOLLY OR IN PART WITHOUT THE CONSENT IN WRITING OF BIL GROUP LTD.



Description:
 BZQF200NYBJ

Fabricated fixed castor with a top plate fixing fitted with a heavy duty white nylon wheel with ball bearings. Wheel diameter 200mm, tread width 55mm, overall height 264mm, top plate 175mm x 140mm, hole centres 140mm x 105mm. Load capacity 3000kg.



	NAME	DATE
DRAWN	Matt	04/02/19
APPROVED BY	Chris	04/02/19
SCALE	2:9	04/02/19
WEIGHT	8.087kg	04/02/19

UNLESS OTHERWISE SPECIFIED DIMENSIONS ARE IN MILLIMETRES

Unspecified Tolerances
 Machining ± 0.25mm
 Fabrication ± 1mm



BIL Group Ltd, Porte Marsh Road, Calne
 Wiltshire, SN11 9BW, United Kingdom
 Tel +44 (0)1249 822 222 Fax: +44 (0)1249 822 300
 www.bilgroup.co.uk

TITLE

BZQF200NYBJ

SIZE DWG NO.

A4

BILCW03BZQF200NYBJ_01

REV

1

FILE NAME BILCW03BZQF200NYBJ_01.PDF

SHEET 1 OF 1