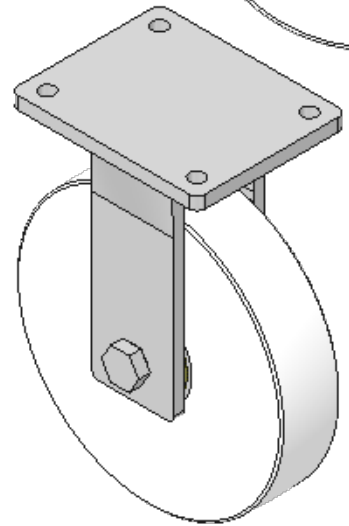
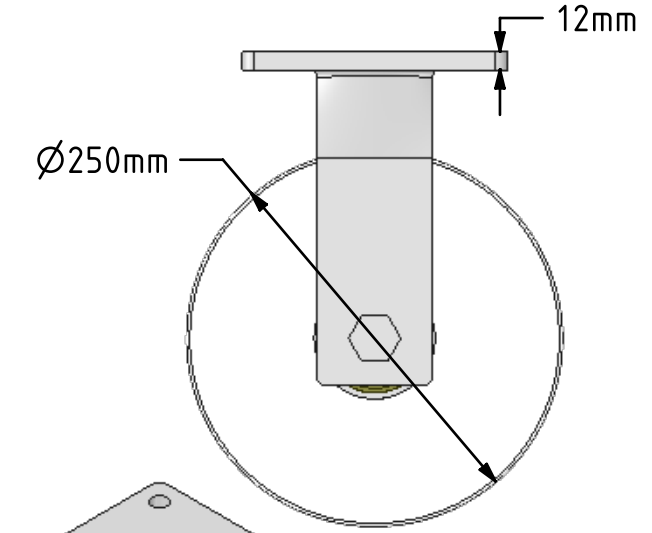
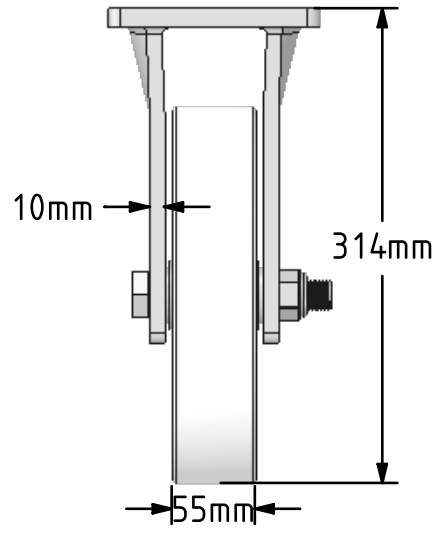
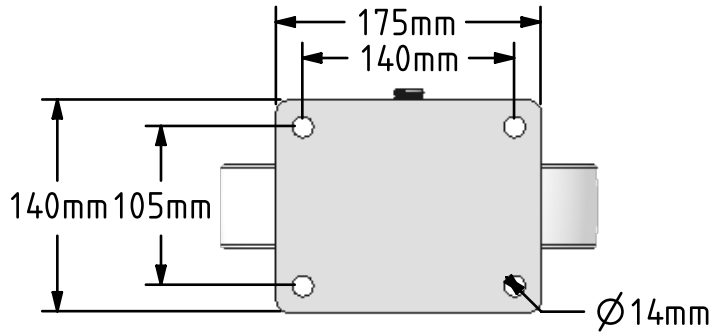



DRAWING DISCLAIMER  
 COPYRIGHT OF THIS DRAWING IS RESERVED BY BIL GROUP LTD. IT IS ISSUED ON CONDITION THAT IT IS NOT REPRODUCED, COPIED, OR DISCLOSED TO A THIRD PARTY EITHER WHOLLY OR IN PART WITHOUT THE CONSENT IN WRITING OF BIL GROUP LTD.



Description:  
 BZQF250NYBJ  
 Fabricated fixed castor with a flat plate fixing fitted with a heavy duty white nylon wheel with ball bearings. Wheel diameter 250mm, tread width 55mm, overall height 314mm, plate size 175mm x 140mm, hole centres 140mm x 105mm. Load capacity 3000kg.



	NAME	DATE	 BIL Group Ltd, Porte Marsh Road, Calne Wiltshire, SN11 9BW, United Kingdom Tel +44 (0)1249 822 222 Fax: +44 (0)1249 822 300 www.bilgroup.co.uk		
DRAWN	Matt	31/05/18			
APPROVED BY	Tim W	31/05/18			
SCALE	1:5	31/05/18			
WEIGHT	9.282kg	31/05/18	TITLE		
UNLESS OTHERWISE SPECIFIED DIMENSIONS ARE IN MILLIMETRES			SIZE	DWG NO.	REV
Unspecified Tolerances Machining ± 0.25mm Fabrication ± 1mm			A4	BILCW03BZQF250NYBJ__01	1
			FILE NAME	SHEET 1 OF 1	
			BILCW03BZQF250NYBJ__01.PDF		