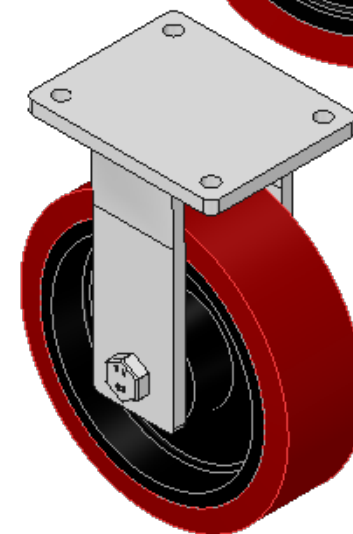
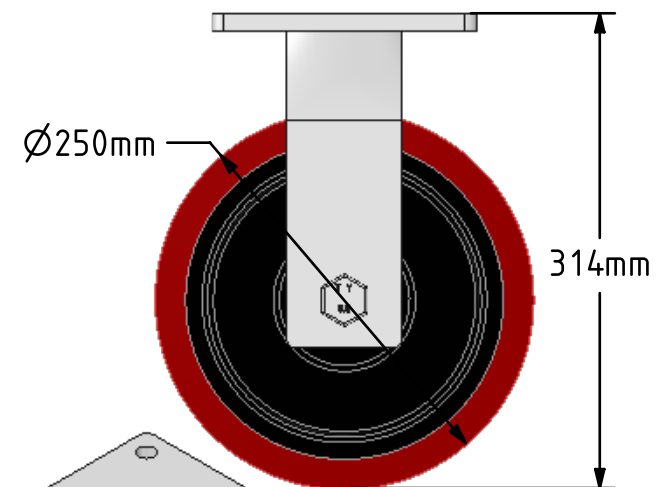
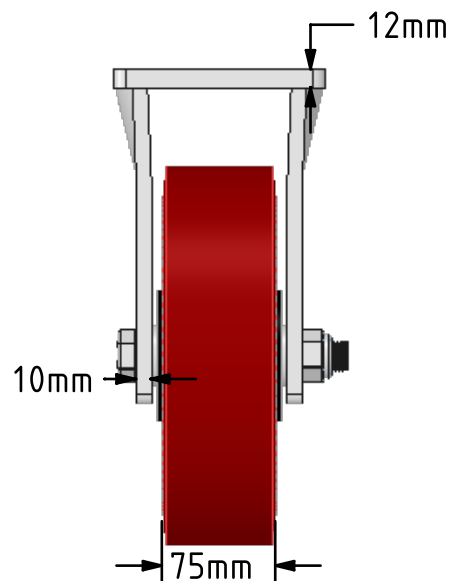
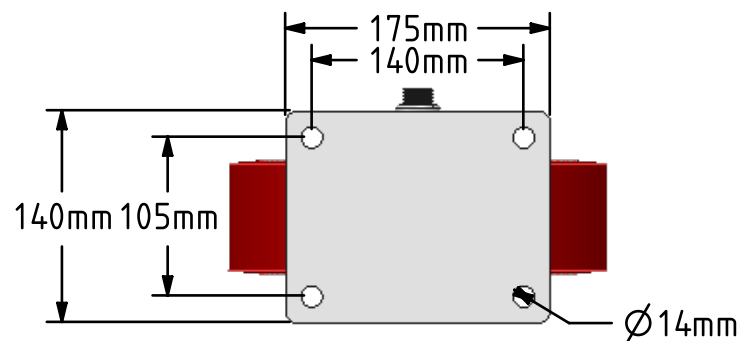
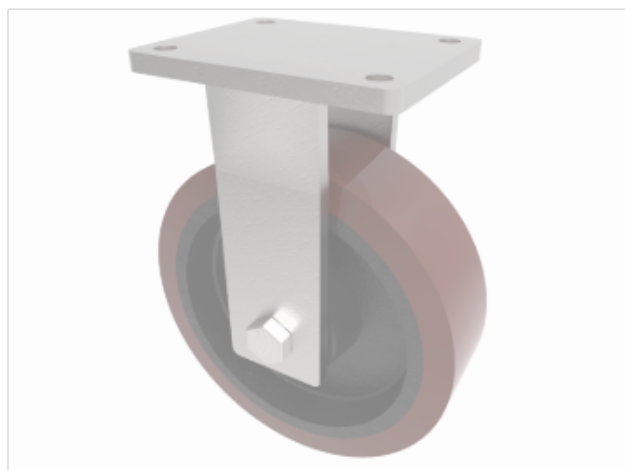


DRAWING DISCLAIMER
 COPYRIGHT OF THIS DRAWING IS RESERVED BY BIL GROUP LTD. IT IS ISSUED ON CONDITION THAT IT IS NOT REPRODUCED, COPIED, OR DISCLOSED TO A THIRD PARTY EITHER WHOLLY OR IN PART WITHOUT THE CONSENT IN WRITING OF BIL GROUP LTD.



Description:
 BZQF250PTBJ

Fabricated fixed castor with a flat plate fixing fitted with a brown polyurethane tyre on cast iron centred wheel with a ball bearing. Wheel diameter 250mm, tread width 75mm, overall height 314mm, plate size 175mm x 140mm, hole centres 140mm x 105mm. Load capacity 1800kg.



	NAME	DATE
DRAWN	Matt	31/05/18
APPROVED BY	Tim W	31/05/18
SCALE	1:5	31/05/18
WEIGHT	15.255kg	31/05/18

UNLESS OTHERWISE SPECIFIED DIMENSIONS ARE IN MILLIMETRES

Unspecified Tolerances
 Machining ± 0.25mm
 Fabrication ± 1mm



BIL Group Ltd, Porte Marsh Road, Calne
 Wiltshire, SN11 9BW, United Kingdom
 Tel +44 (0)1249 822 222 Fax: +44 (0)1249 822 300
 www.bilgroup.co.uk

TITLE

BZQF250PTBJ

SIZE A4
 DWG NO.

BILCW03BZQF250PTBJ_01

REV 1

FILE NAME BILCW03BZQF250PTBJ_01.PDF SHEET 1 OF 1