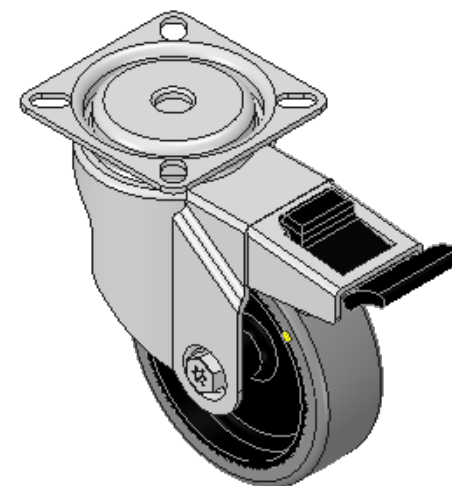
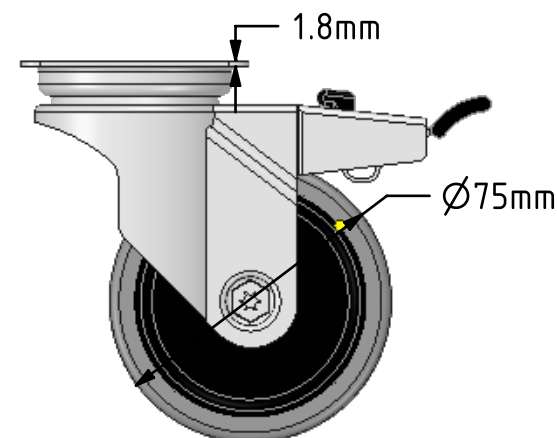
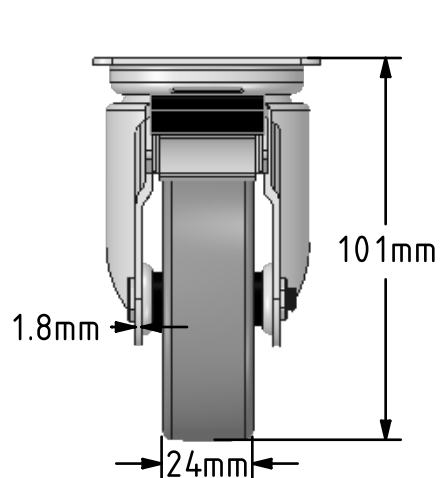
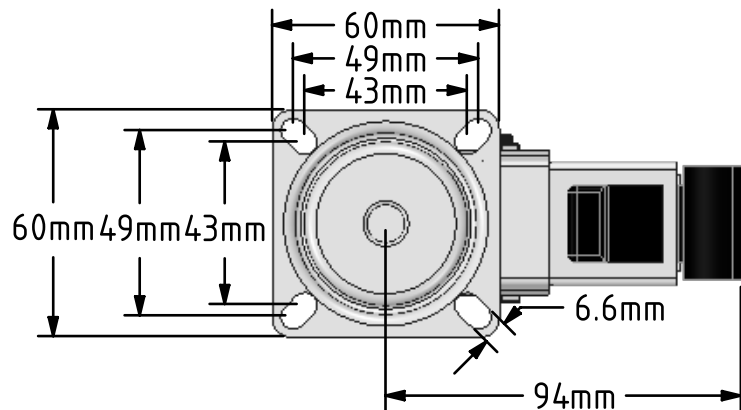


**DRAWING DISCLAIMER**  
 COPYRIGHT OF THIS DRAWING IS RESERVED BY BIL GROUP LTD. IT IS ISSUED ON CONDITION THAT IT IS NOT REPRODUCED, COPIED, OR DISCLOSED TO A THIRD PARTY EITHER WHOLLY OR IN PART WITHOUT THE CONSENT IN WRITING OF BIL GROUP LTD.



**Description:**  
 BZRA75GRECSWB

Pressed steel swivel castor with a flat plate fitted with a grey electrically conductive rubber tyre on polypropylene centred wheel with a plain bearing. Wheel diameter 75mm, tread width 24mm, overall height 101mm plate size 60mm x 60mm, hole centres 49mm x 49mm or 43mm x 43mm with a Load capacity 60kg. Conductive offers a resistance R<10KΩ



	NAME	DATE
DRAWN	Matt	05/12/17
APPROVED BY	Tim W	05/12/17
SCALE	1:2	05/12/17
WEIGHT	0.325kg	05/12/17

UNLESS OTHERWISE SPECIFIED DIMENSIONS ARE IN MILLIMETRES

Unspecified Tolerances  
 Machining ± 0.25mm  
 Fabrication ± 1mm



BIL Group Ltd, Porte Marsh Road, Calne  
 Wiltshire, SN11 9BW, United Kingdom  
 Tel +44 (0)1249 822 222 Fax: +44 (0)1249 822 300  
 www.bilgroup.co.uk

TITLE

**BZRA75GRECSWB**

SIZE DWG NO.  
 A4 BILCW03BZRA75GRECSWB\_02

REV  
 2

FILE NAME BILCW03BZRA75GRECSWB\_02.PDF SHEET 1 OF 1