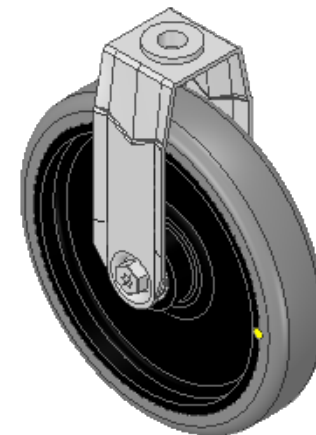
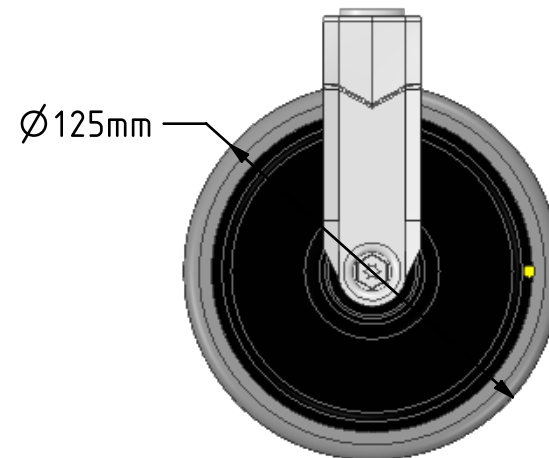
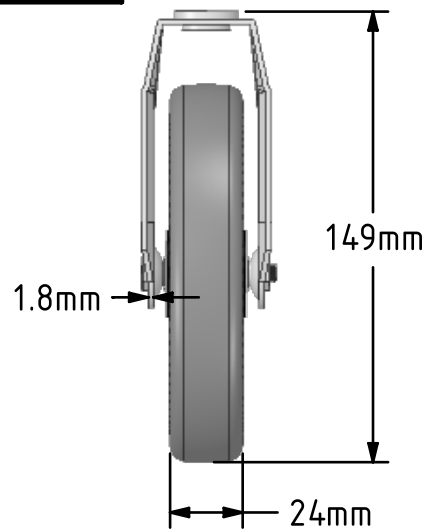
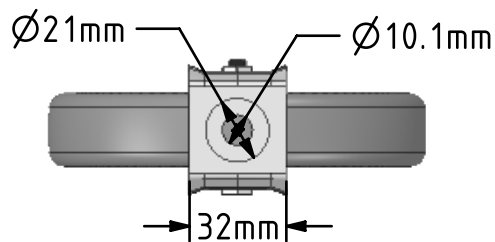


DRAWING DISCLAIMER
 COPYRIGHT OF THIS DRAWING IS RESERVED BY BIL GROUP LTD. IT IS ISSUED ON CONDITION THAT IT IS NOT REPRODUCED, COPIED, OR DISCLOSED TO A THIRD PARTY EITHER WHOLLY OR IN PART WITHOUT THE CONSENT IN WRITING OF BIL GROUP LTD.



Description:
 BZRAF125GRECBJBH10

Pressed steel fixed castor with a 10mm bolt hole fitted with a grey electrically conductive rubber tyre on polypropylene centred wheel with ball bearing. Wheel diameter 125mm, tread width 24mm, overall height 149mm with a Load capacity 80kg. Conductive offers a resistance $R < 10K\Omega$



	NAME	DATE
DRAWN	Matt	08/03/19
APPROVED BY	Chris	08/03/19
SCALE	2:5	08/03/19
WEIGHT	0.298kg	08/03/19

 BIL Group Ltd, Porte Marsh Road, Calne
 Wiltshire, SN11 9BW, United Kingdom
 Tel +44 (0)1249 822 222 Fax: +44 (0)1249 822 300
 www.bilgroup.co.uk

TITLE
BZRAF125GRECBJBH10

UNLESS OTHERWISE SPECIFIED DIMENSIONS ARE IN MILLIMETRES
 Unspecified Tolerances
 Machining $\pm 0.25\text{mm}$
 Fabrication $\pm 1\text{mm}$

SIZE	DWG NO.	REV
A4	BILCW03BZRAF125GRECBJBH10__01	1

FILE NAME BILCW03BZRAF125GRECBJBH10__01.PDF SHEET 1 OF 1