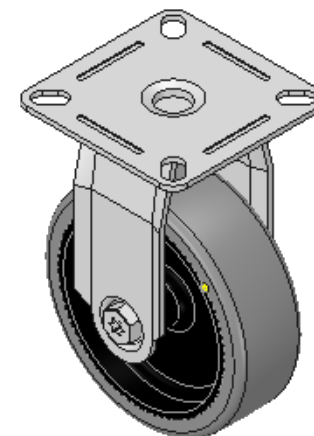
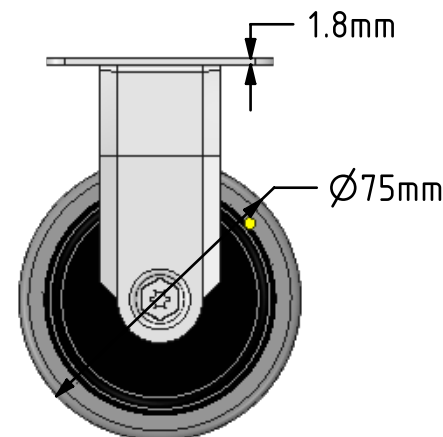
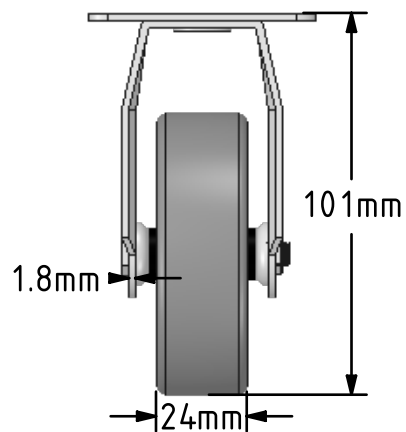
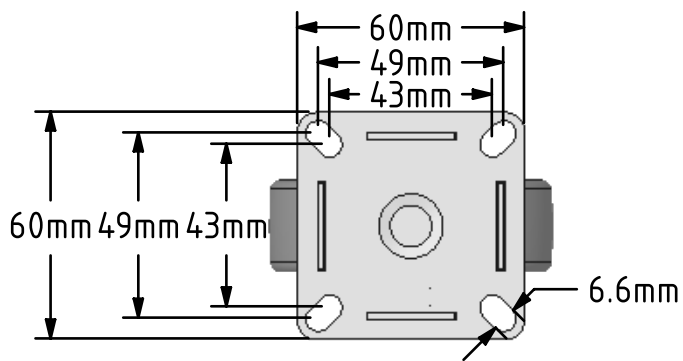



DRAWING DISCLAIMER
 COPYRIGHT OF THIS DRAWING IS RESERVED BY BIL GROUP LTD. IT IS ISSUED ON CONDITION THAT IT IS NOT REPRODUCED, COPIED, OR DISCLOSED TO A THIRD PARTY EITHER WHOLLY OR IN PART WITHOUT THE CONSENT IN WRITING OF BIL GROUP LTD.



Description:
 BZRAF75GREC

Pressed steel fixed castor with a flat plate fitted with a grey electrically conductive rubber tyre on polypropylene centred wheel with a plain bearing. Wheel diameter 75mm, tread width 24mm, overall height 101mm plate size 60mm x 60mm, hole centres 49mm x 49mm or 43mm x 43mm with a Load capacity 60kg. Conductive offers a resistance R<10KΩ



	NAME	DATE	BIL Group Ltd, Porte Marsh Road, Calne Wiltshire, SN11 9BW, United Kingdom Tel +44 (0)1249 822 222 Fax: +44 (0)1249 822 300 www.bilgroup.co.uk	
DRAWN	Matt	05/12/17		
APPROVED BY	Chris	05/12/17		
SCALE	1:2	05/12/17		
WEIGHT	0.188kg	05/12/17		
UNLESS OTHERWISE SPECIFIED DIMENSIONS ARE IN MILLIMETRES			SIZE	DWG NO.
Unspecified Tolerances Machining ± 0.25mm Fabrication ± 1mm			A4	BILCW03BZRAF75GREC__02
			REV	2
			FILE NAME	BILCW03BZRAF75GREC__02.PDF SHEET 1 OF 1