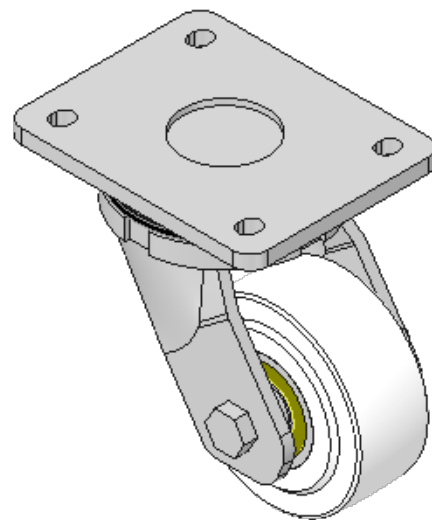
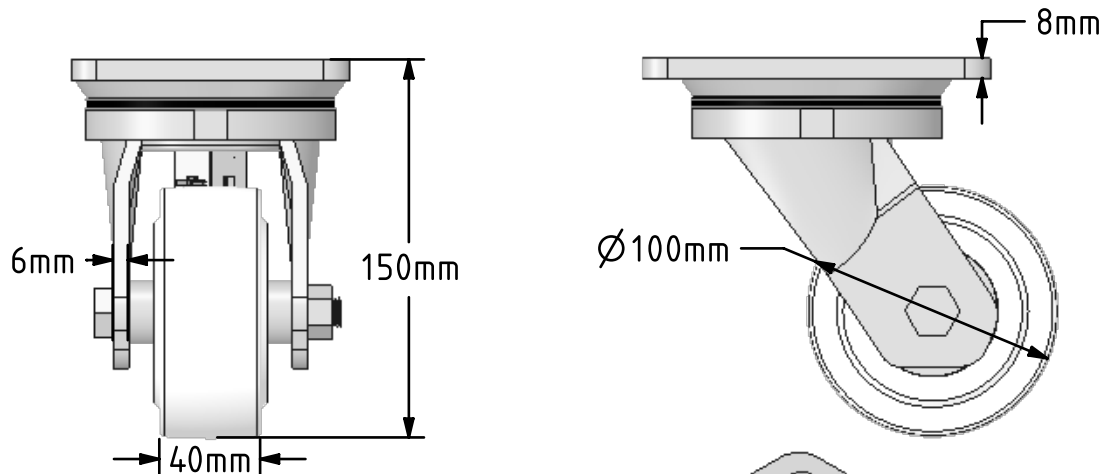
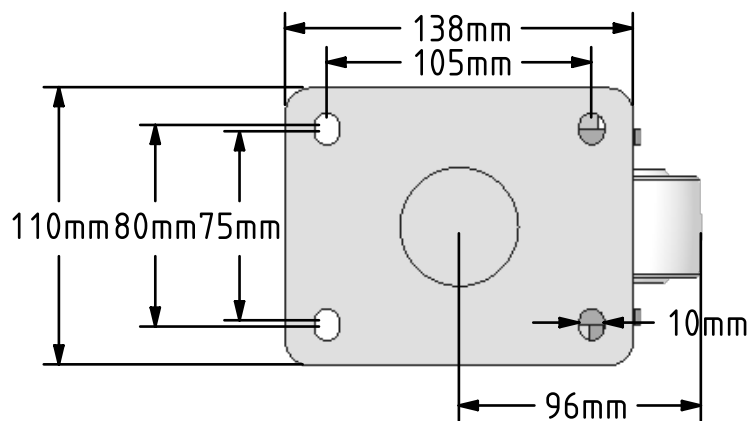



DRAWING DISCLAIMER
 COPYRIGHT OF THIS DRAWING IS RESERVED BY BIL GROUP LTD. IT IS ISSUED ON CONDITION THAT IT IS NOT REPRODUCED, COPIED, OR DISCLOSED TO A THIRD PARTY EITHER WHOLLY OR IN PART WITHOUT THE CONSENT IN WRITING OF BIL GROUP LTD.



Description:
 BZSAB100NYBJ

Fabricated zinc plated swivel castor with plate fixing fitted with a white nylon wheel with ball bearings. Wheel diameter 100mm, tread width 40mm, overall height 150mm, plate size 138mm x 110mm, hole centres 105mm x 80mm/75mm. Load capacity 1250kg.



	NAME	DATE	 BIL Group Ltd, Porte Marsh Road, Calne Wiltshire, SN11 9BW, United Kingdom Tel +44 (0)1249 822 222 Fax: +44 (0)1249 822 300 www.bilgroup.co.uk
DRAWN	Matt	23/05/18	
APPROVED BY	Tim W	23/05/18	
SCALE	1:3	23/05/18	
WEIGHT	3.452kg	23/05/18	TITLE
UNLESS OTHERWISE SPECIFIED DIMENSIONS ARE IN MILLIMETRES Unspecified Tolerances Machining ± 0.25mm Fabrication ± 1mm			BZSAB100NYBJ
SIZE		DWG NO.	REV
A4		BILCW03BZSAB100NYBJ_01	1
FILE NAME		SHEET 1 OF 1	
BILCW03BZSAB100NYBJ_01.PDF			